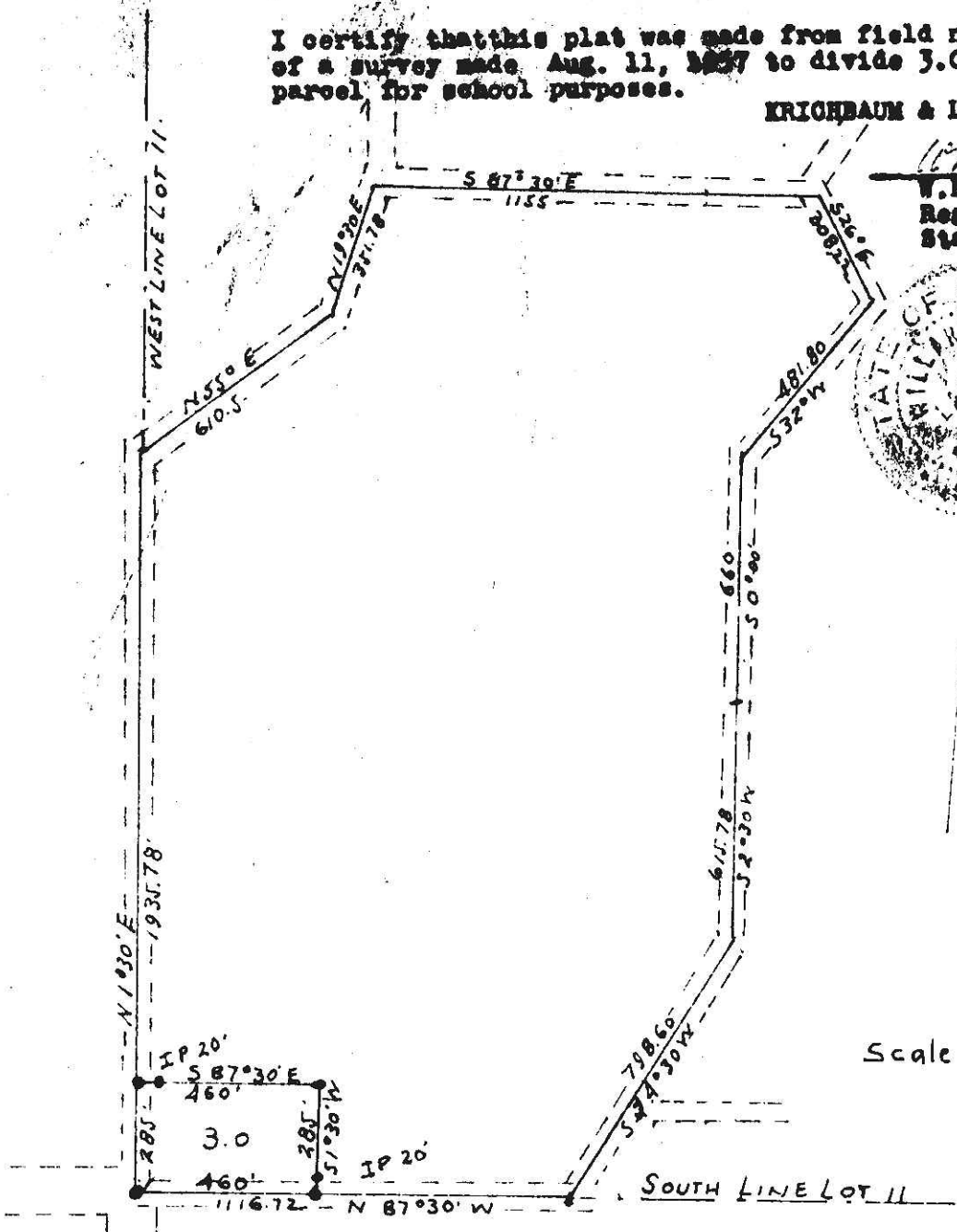
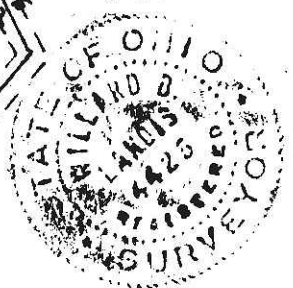


Bearings from owner's deed Vol 129 P 174

I certify that this plat was made from field notes of a survey made Aug. 11, 1957 to divide 3.0 A parcel for school purposes.

KRICHBAUM & LANDIS

*W.S. Landis*  
 W.S. Landis  
 Reg. Sur 4425  
 State of Ohio



53511

Received December 24, 1957.  
 At 10:15 of clock A. M.  
 Recorded December 24, 1957.  
 In Holmes County  
 Record of Plat  
 Vol. 2 Page 117  
Evelyn Anderson  
 V.L. Recorder.  
 Recorder's Fee \$ 1.00.