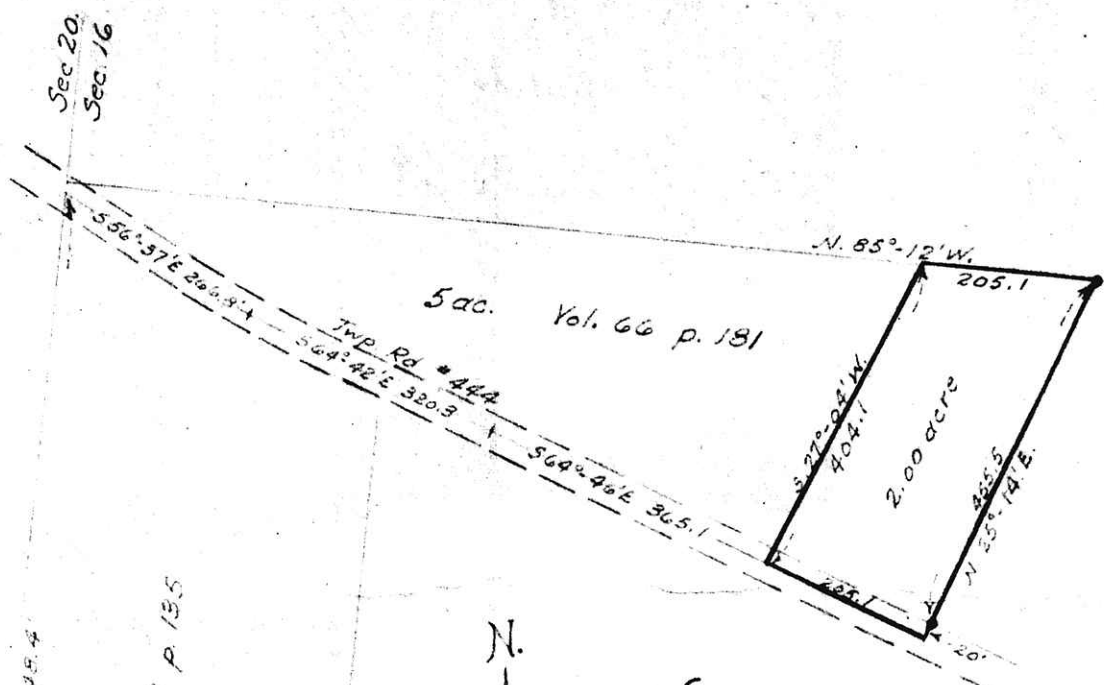


PLAT OF A 2.00 ACRE TRACT TO BE CONVEYED FROM NELSON KAUFMAN ET AL.
TO LEVI N. TROYER

Situated in the Township of Walnut Creek, County of Holmes,
and State of Ohio

Being part of the Northwest Quarter of Sec. 16, Township
Nine, Range Four

SCALE: 1" = 200'



VOL 2 PAGE 116

53504

Received December 23 1957
At 3:45 o'clock P.M.
Recorded December 23 1957
In Holmes County
Record of...
Vol. 2 Page 116
Recorder's Fee \$1.00



900. Vol. 73 p. 135

Sec. 20
Stone
Sec. 16

Half Sec. Line