

# LOCATION PLAN

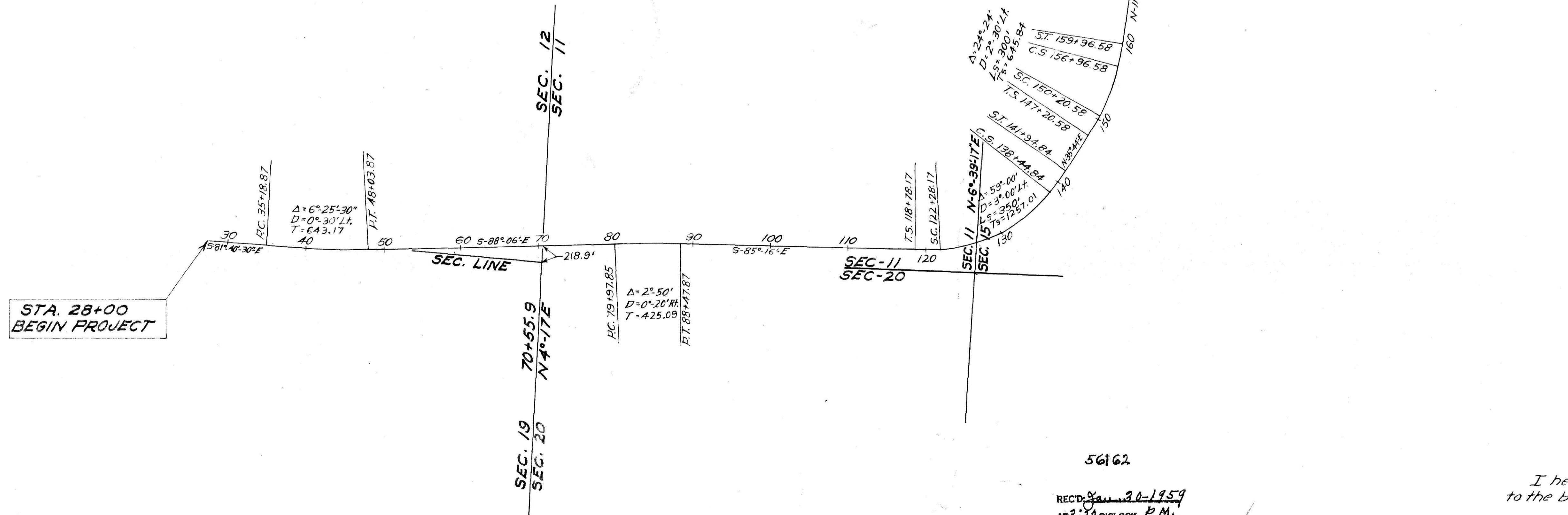
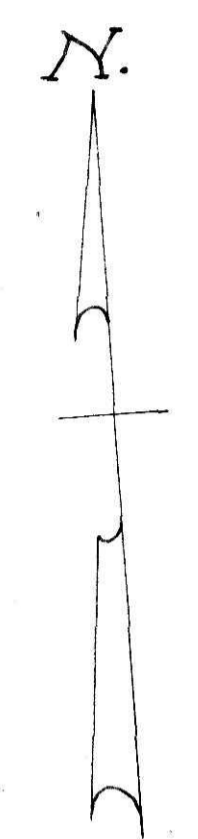
HOL-62-(10.00-14.10)

SCALE: 1" = 800'

CORRECTED ON APRIL 17<sup>TH</sup>, 1959.  
BY Evelyn Anderson  
RECORDER.

CENTERLINE MONUMENTS WILL BE PLACED 4" BELOW GROUND-LINE BEFORE OR AFTER CONSTRUCTION.

P.C. 35+18.87	C.S. 156+96.58
P.O.C. 41+00	S.T. 159+96.58
P.T. 48+03.87	P.C. 178+14.31
P.O.T. 63+00	P.O.C. 186+00
P.C. 79+97.85	P.T. 202+87.34
P.T. 88+47.87	T.S. 220+99.66
P.O.T. 103+00	S.C. 224+99.66
T.S. 118+78.17	P.O.C. 229+00
S.C. 122+28.17	P.O.C. 233+00
P.O.C. 130+00	P.O.C. 237+00
C.S. 138+44.84	C.S. 240+50.49
S.T. 141+94.84	S.T. 244+50.49
S.C. 150+20.58	P.O.T. 255+00



56162  
 REC'D: Jan 30-1959  
 AT 3:20 O'CLOCK P.M.  
 RECORDED: Jan 30-1959  
 HOLMES CO. PLAT VOL. 1 - PG. 1147F.  
 FEE: \$7.48  
 Evelyn Anderson RECORDER

I hereby certify that this plat is correct to the best of my knowledge and belief.

JJE Quicksall 1/8/59  
 Division Engineer Date