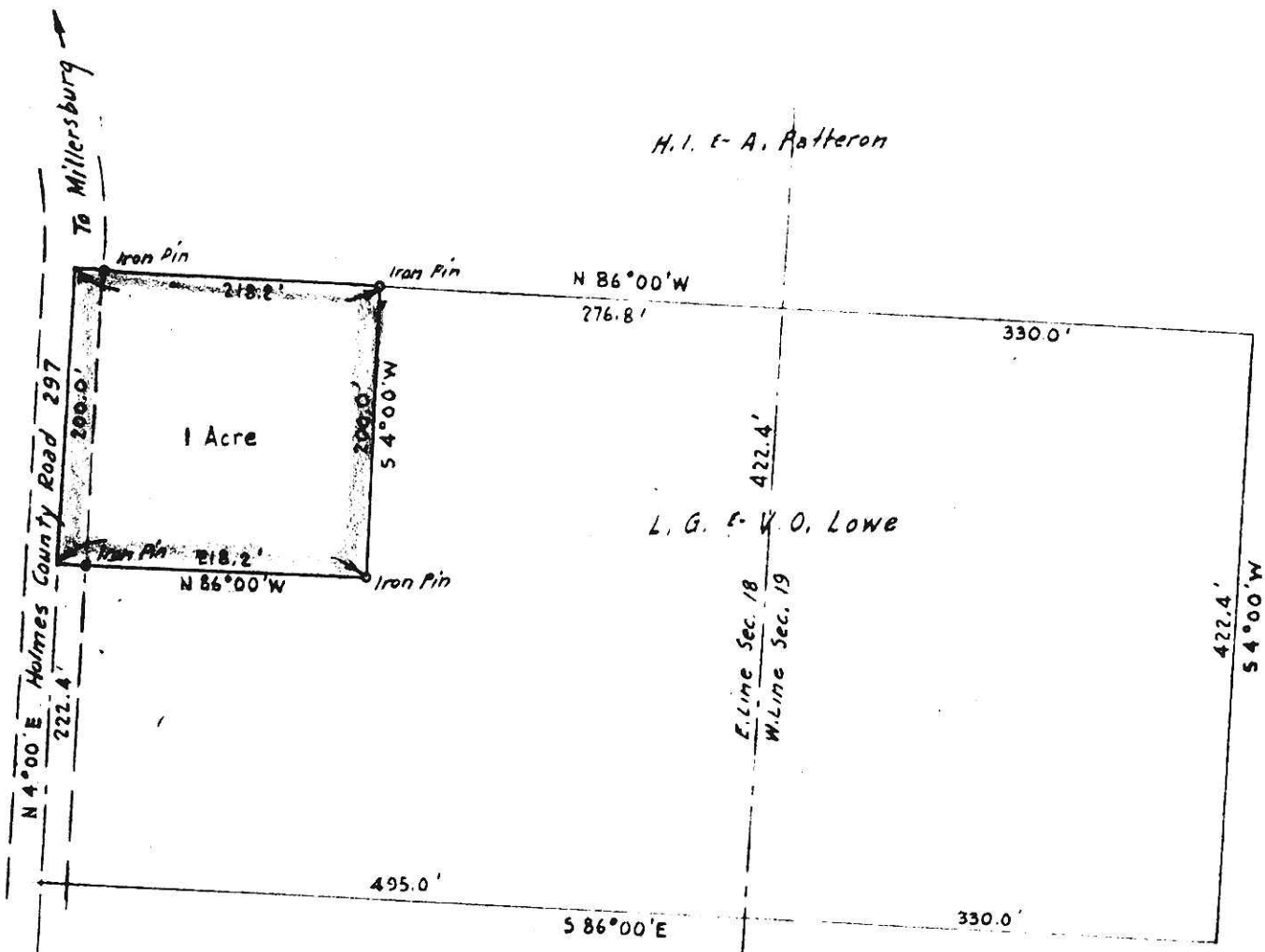


H. I. E. A. Patterson

L. G. F. V. O. Lowe

H. I. E. A. Patterson

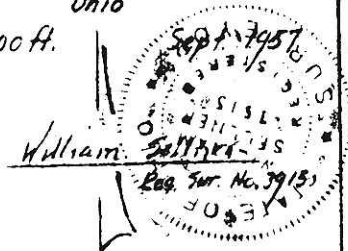


MAP
SHOWING LOCATION
OF A
PARCEL OF LAND
ON THE
L. G. F. V. O. LOWE PROPERTY
IN

Section 18 Twp. 9, Range 7
Hardy Township, Holmes County
Ohio

Scale 1" = 100 ft.

Drawn from
a survey by



53496 ✓

Received December 21, 1957
At 1:50 o'clock... PM
Recorded December 21, 1957
In Holmes County
Record of... Plats
Vol. 2 Page 114
W. Lynn Anderson Recorder
Recorder's Fee \$ 1.20

Poggy Sjutz

N 4°00'E 388.08'
S.E. Cor. of the N.E. Qr.
of Section 18
S.W. Qr. of the N.W. Qr.
of Section 19