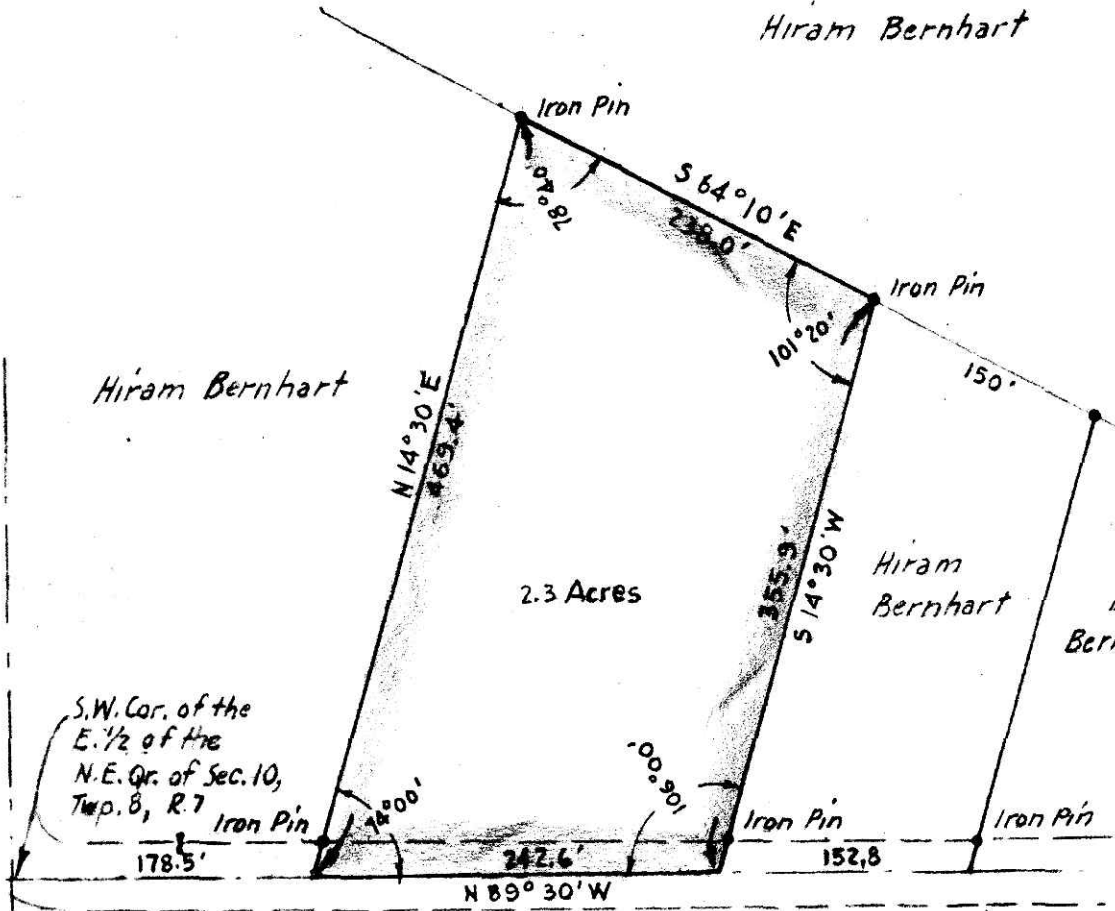


Hiram Bernhart

Hiram Bernhart



2.3 Acres

Hiram Bernhart

Dale Bernhart

MAP SHOWING LOCATION OF A PARCEL OF LAND ON THE HIRAM BERNHART PROPERTY

Section 10, Twp. 8, Range 7
Mechanic Twp. Holmes County
Ohio

Scale 1" = 100 ft. Aug. 1957

Drawn from a survey by William Sellner

Reg. Sur. No. 3915



53179

Received October 26 1957
 At 10:00 o'clock P. M.
 Recorded October 26 1957
 In Holmes County
 Record of H. Sellner
 Vol. 2 Page 102
William Sellner Recorder
 Recorder's Fee \$ 1.00

S.W. Cor. of the E. 1/2 of the N.E. Qr. of Sec. 10, Twp. 8, R. 7

Holmes County Road No. 388