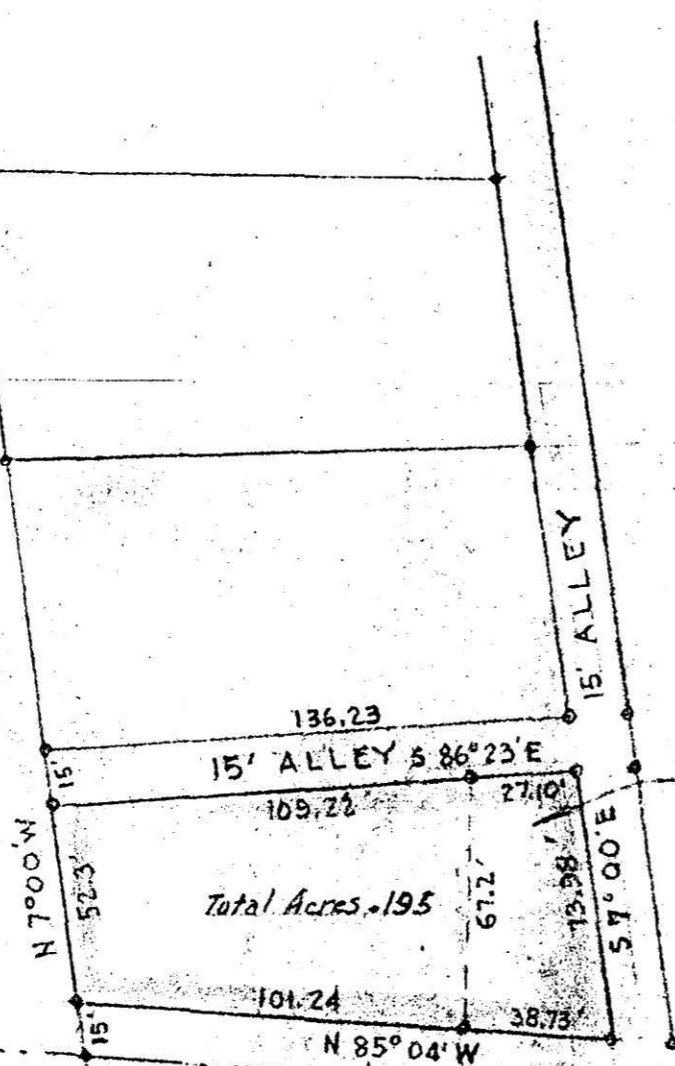


SOUTH WASHINGTON STREET
Millersburg

S.W. Cor. of the
N.E. Qr. of
Section 19

585° 04' E
543.4'



Total Acres = 1.95

Harry C. Logsdon

Use of this area to
be retained by the
grantor until barn
is removed.

South Corp. Line Village of Millersburg

Harry C. Logsdon



MAD
SHOWING LOCATION
OF A
PARCEL OF LAND
ON THE

H.L. LOGSDON PROPERTY
SOUTH WASHINGTON ST.
Village of Millersburg.
Section 19, Township 9, R. 7
Hardy Township, Holmes Co.

Scale 1" = 50ft.

June 1957

Drawn by and
Certified Correct



53087

Received *October 10* 1957
At *3:30* o'clock *P.*M.

Recorded *October 10* 1957

In Holmes County
Record of *Plats*

Vol. *2* Page *95*

C. Evelyn Anderson Recorder

Recorder's Fee \$ *1.00*