

52893

Received... *Sept: 13... 1957*

At. *11:25* o'clock... *A.M*

Recorded. *Sept: 13... 1957*

In Holmes County

Record of... *Plats*.....

Vol... *2*..... Page... *8.7*.....

Evelyn Anderson, Recorder

Recorder's Fee *\$1.00*.....



MAP
SHOWING LOCATION
OF
2 PARCELS OF LAND
ON THE

EMMA M'CAUSLIN FARM

Lot 28, Sec. 2, Twp. 8 Range 6
Mechanic Twp., Holmes County
Ohio

Scale 1" = 100 ft.

Sept 1957

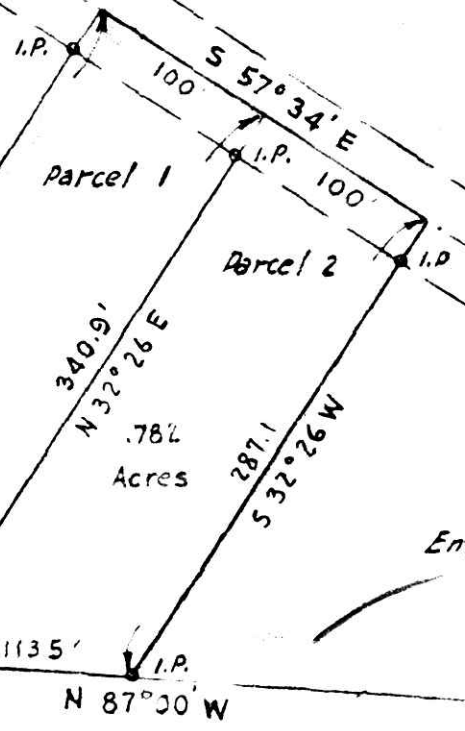
Drawn from a
survey by

William Sellner



Carl Harmon

Emma M'Caustlin



S.W. Cor. of
Lot No. 28

South Line of Lot 28

Emma M'Caustlin