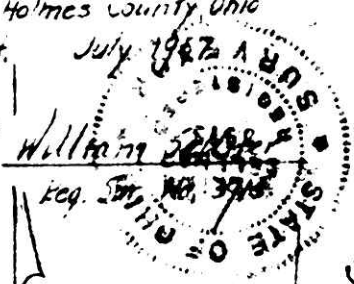




MAP  
 SHOWING LOCATION  
 OF A  
 PARCEL OF LAND  
 ON THE  
 CARROLL RUTH LANDON PROPERTY  
 DEEDED TO  
 LUCY BRINK

Section 11, Twp. 8, Range 8  
 Killbuck Township, Holmes County Ohio  
 Scale 1" = 100 ft. July 1967

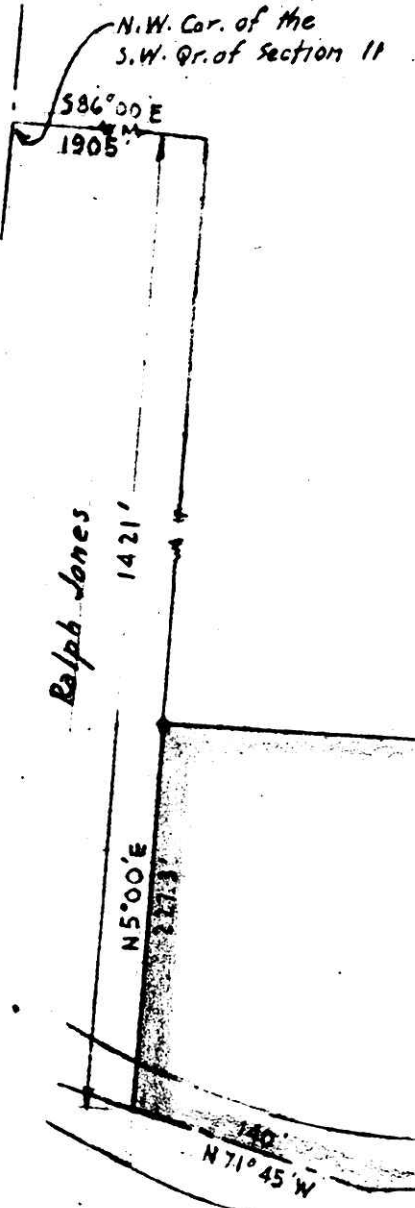
Drawn by and  
 Certified Correct



Carroll E. Ruth Landon

Lucy Brink  
 4.952 Acres

Auditors Record  
 Transferred 7/6/57



52673

Received August 6, 1957  
 At 3:40 o'clock P.M.  
 Recorded August 6, 1957  
 In Holmes County  
 Record of... *Plata*  
 Page 75  
*William Anderson* Recorder  
 Recorder's Fee \$ 1.<sup>00</sup>