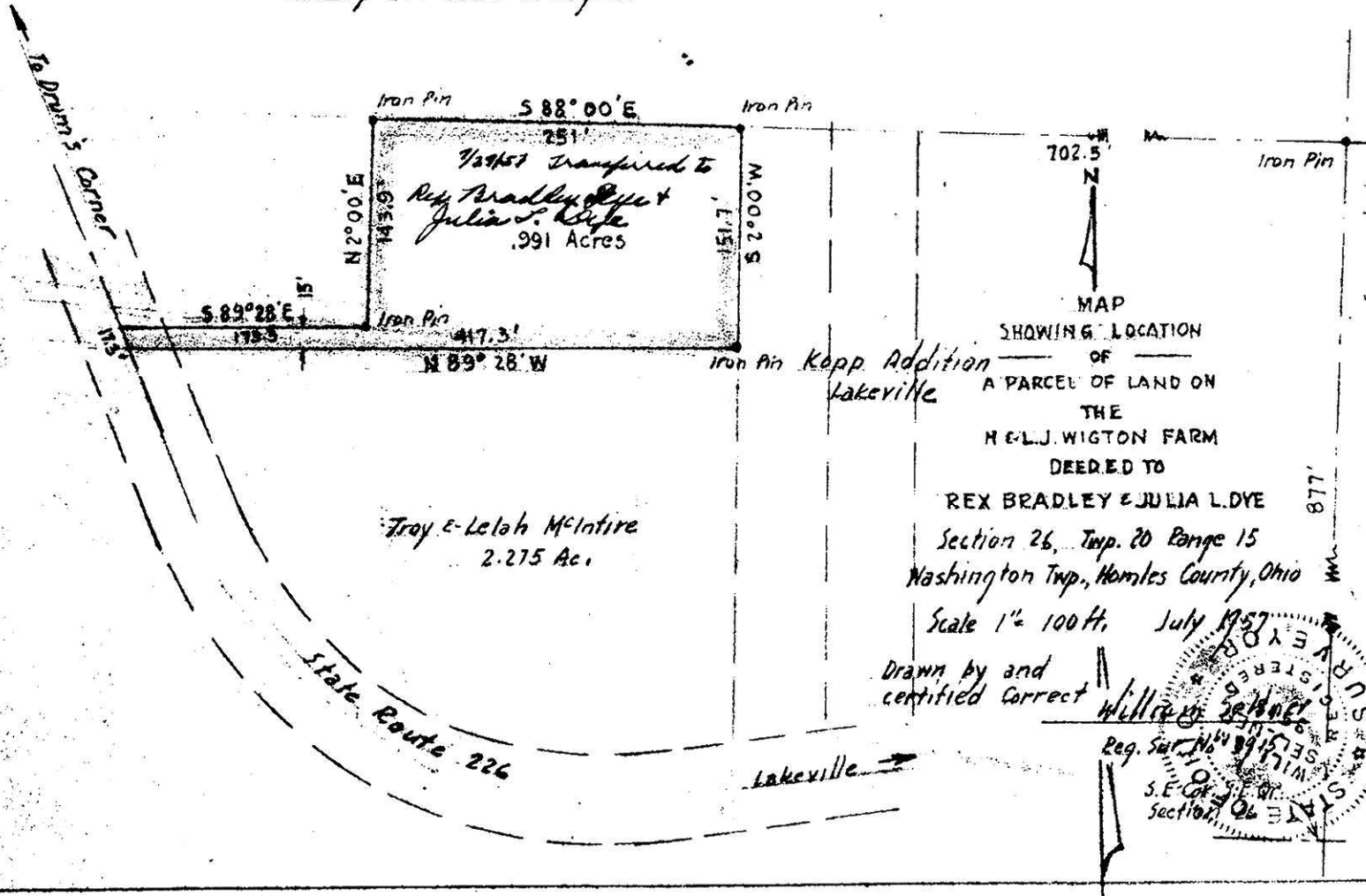


Harry E. & Leola J. Wigton



1/2667 transferred to
 Rex Bradley Dye &
 Julia L. Dye
 .991 Acres

Troy E. Leola McIntire
 2.275 Ac.

MAP
 SHOWING LOCATION
 OF
 A PARCEL OF LAND ON
 THE
 H. E. L. J. WIGTON FARM
 DEEDED TO

REX BRADLEY & JULIA L. DYE
 Section 26, Twp. 20 Range 15
 Washington Twp., Holmes County, Ohio

Scale 1" = 100 ft. July 1957
 Drawn by and
 certified correct



Kopp Addition
 Lakeville

State Route 226

Lakeville →

52610

Received July 29, 1957
 At 2:00 o'clock P.M.
 Recorded July 29, 1957
 In Holmes County
 Record of...
 Vol. 2, Page 73
 Rexley Anderson, Recorder
 Recorder's Fee \$1.00