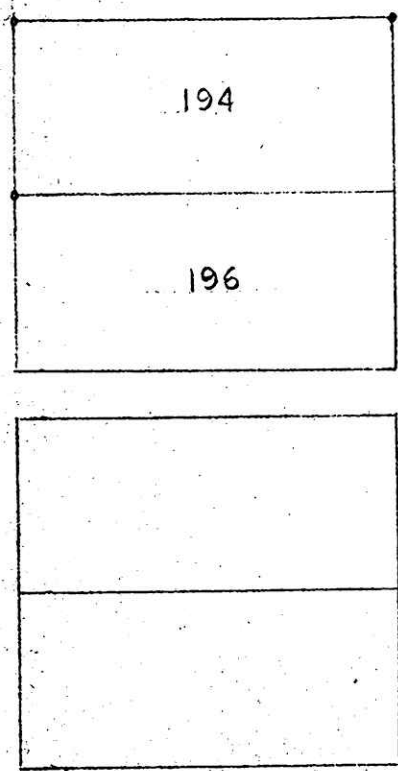
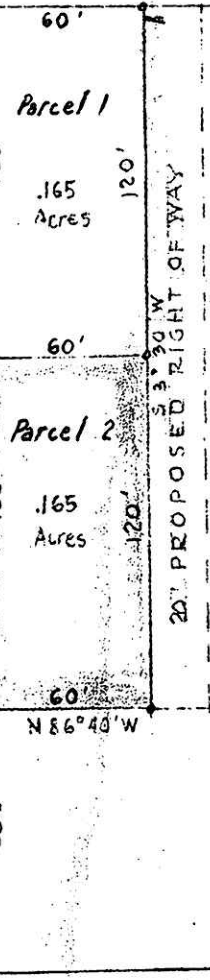


MAIN STREET
N 3° 30' E

GROVER STREET



ALLEY



194.5'

101.3

1.010 Ac.

330'
31° 57' E
Right of Way
C.A. & C.Ry



MAP
SHOWING LOCATION
OF
2 PARCELS OF LAND
ON THE
CLOSE PROPERTY ON GROVER ST.

Village of Killbuck
Section 15, Township 8, Range 7
Killbuck Township, Holmes County, O.
Scale 1" = 50 ft. June 1957

Drawn by and
Certified Correct

William Sellner

Reg. Survey No. 3915



52436

Received... July 2, ... 1957
At 3:40 o'clock... P.M.
Recorded... July 2, ... 1957
In Holmes County
Record of... Plats...
Vol. 2... Page 66...
Evelyn Anderson... Recorder
Recorder's Fee \$1:50.....