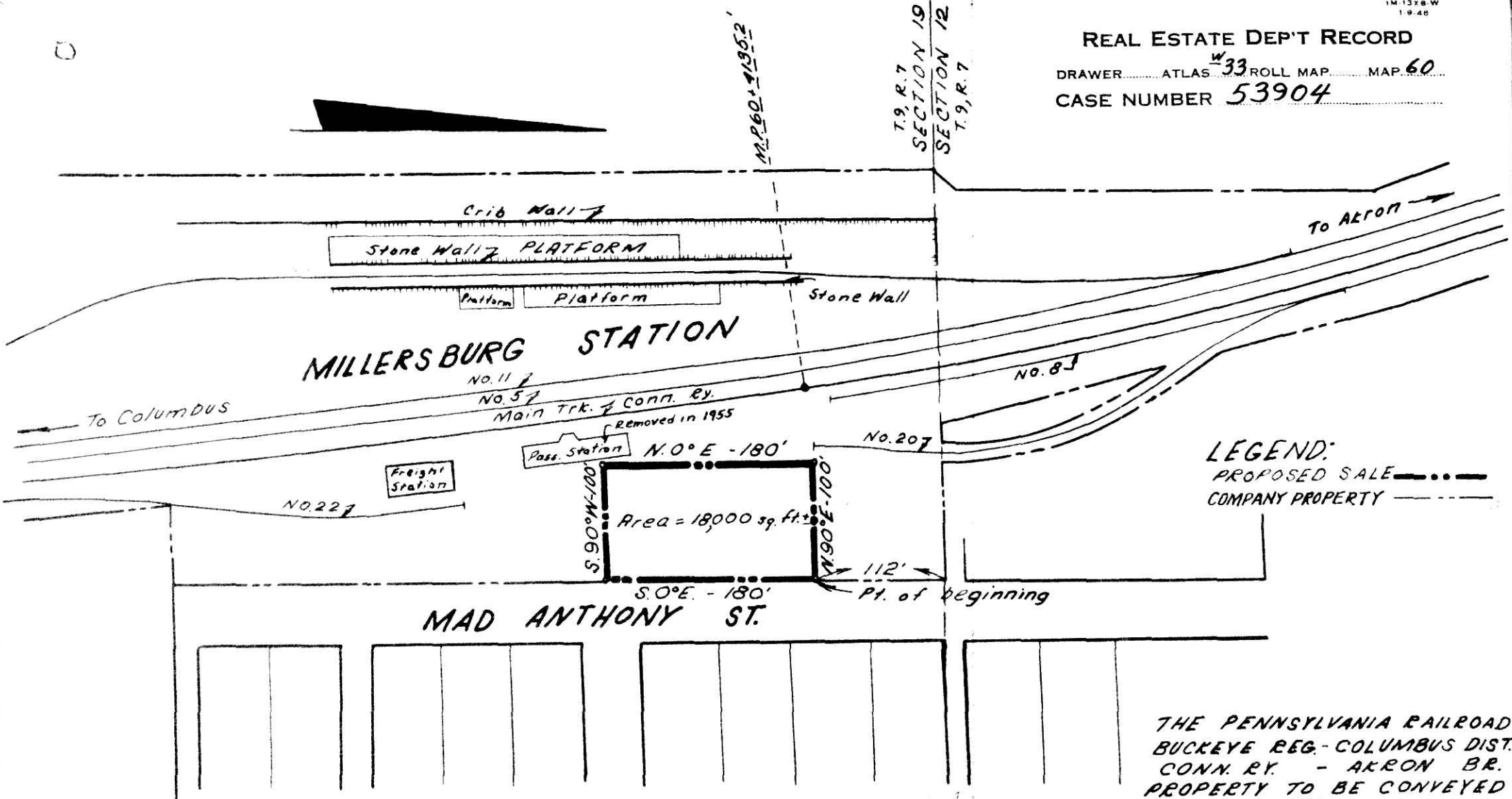


REAL ESTATE DEPT RECORD

DRAWER ATLAS ^W33 ROLL MAP MAP 60
CASE NUMBER 53904



LEGEND:
 PROPOSED SALE - - - -
 COMPANY PROPERTY - - - -

PART OF N.W. 1/4 OF SEC. 19, T. 9, R. 7

LOCATION: VALUATION SECTION NO. 10-OHIO ~ MAP 34
 WARD: MILLERSBURG BOROUGH
 TOWNSHIP: (HARDY) COUNTY: HOLMES STATE: OHIO

APPROVED H. Hanna
 REGIONAL ENGINEER

THE PENNSYLVANIA RAILROAD
 BUCKEYE REG. - COLUMBUS DIST.
 CONN. RY. - AKRON BR.
 PROPERTY TO BE CONVEYED
 BY
 THE CONNECTING RAILWAY COMPANY
 TO
 HOLMES COUNTY FARM BUREAU
 COOPERATIVE ASSOCIATION, INCORPORATED
 SCALE 1 IN. = 100' DATE 9-21-56
 MADE BY JEE CHECKED BY WWP

In Holmes County
 Record of... P. L. Lister
 Vol. 2 Page... 64
Wesley Anderson Recorder
 Recorder's Fee \$ 1.00

52332 ✓
 Received... JUNE 17, 1957
 At 8:50 o'clock... A.M.
 Recorded... JUNE 17, 1957