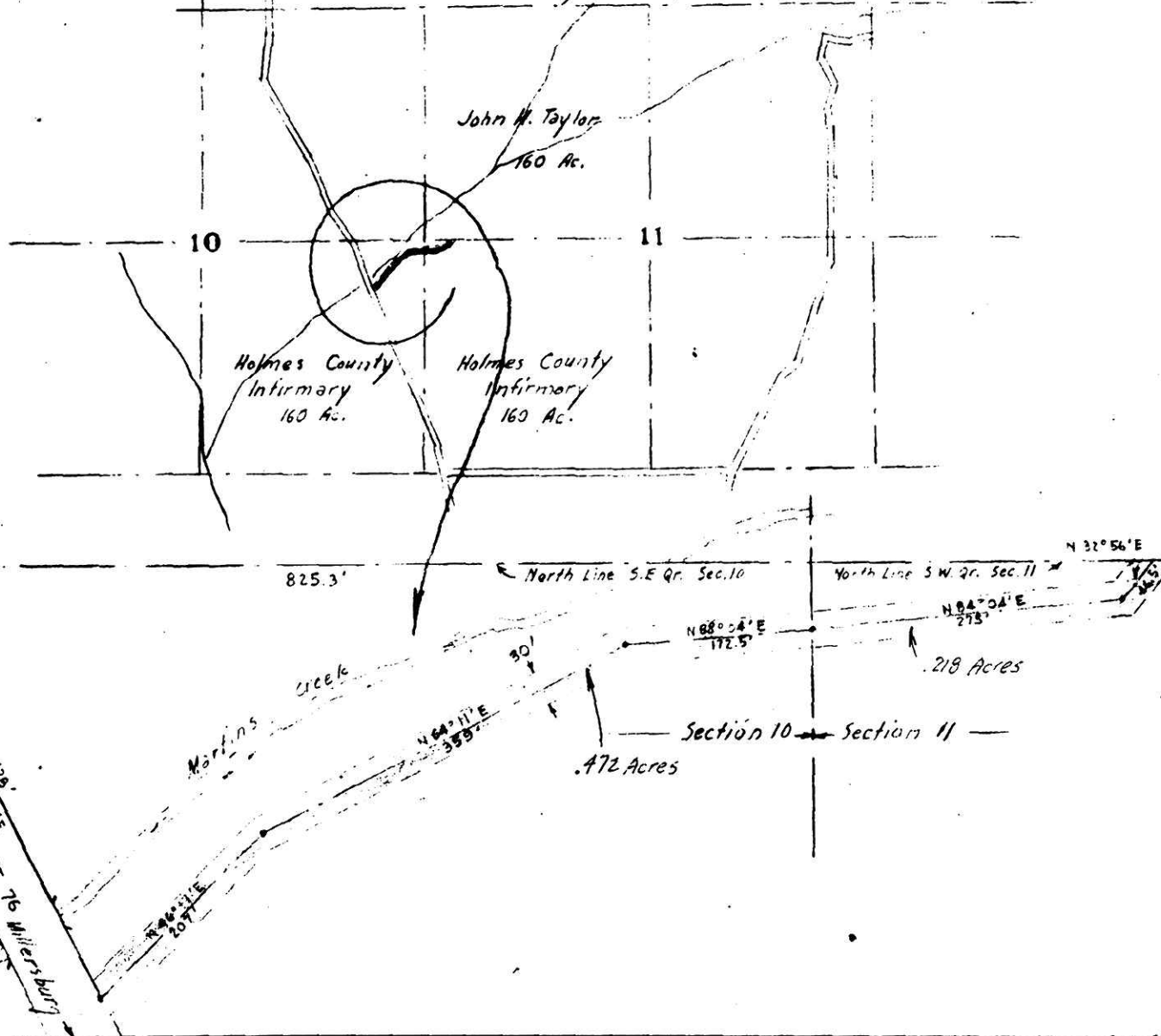


Map of a part of Sections 10 and 11
 showing location of 30' Right-of-Way
 across Holmes County Infirmary land



52243 ✓
 Received May 27 1957
 At 3:20 o'clock P.M.
 Recorded May 27 1957
 In Holmes County
 Record of Plats
 Vol. 2 Page 61
 Evelyn Anderson, Recorder
 Recorder's Fee \$1.00

MAP
 SHOWING LOCATION
 OF
 A 30 FOOT RIGHT OF WAY
 ON THE
 HOLMES COUNTY INFIRMARY LAND
 Sections 10-11, Twp. 10, Range 13
 Prairie Township Holmes County
 Ohio
 Scale 1" = 100 ft. | May 1957
 Drawn by and
 Certified Correct

William Sell
 Reg. Sur.
