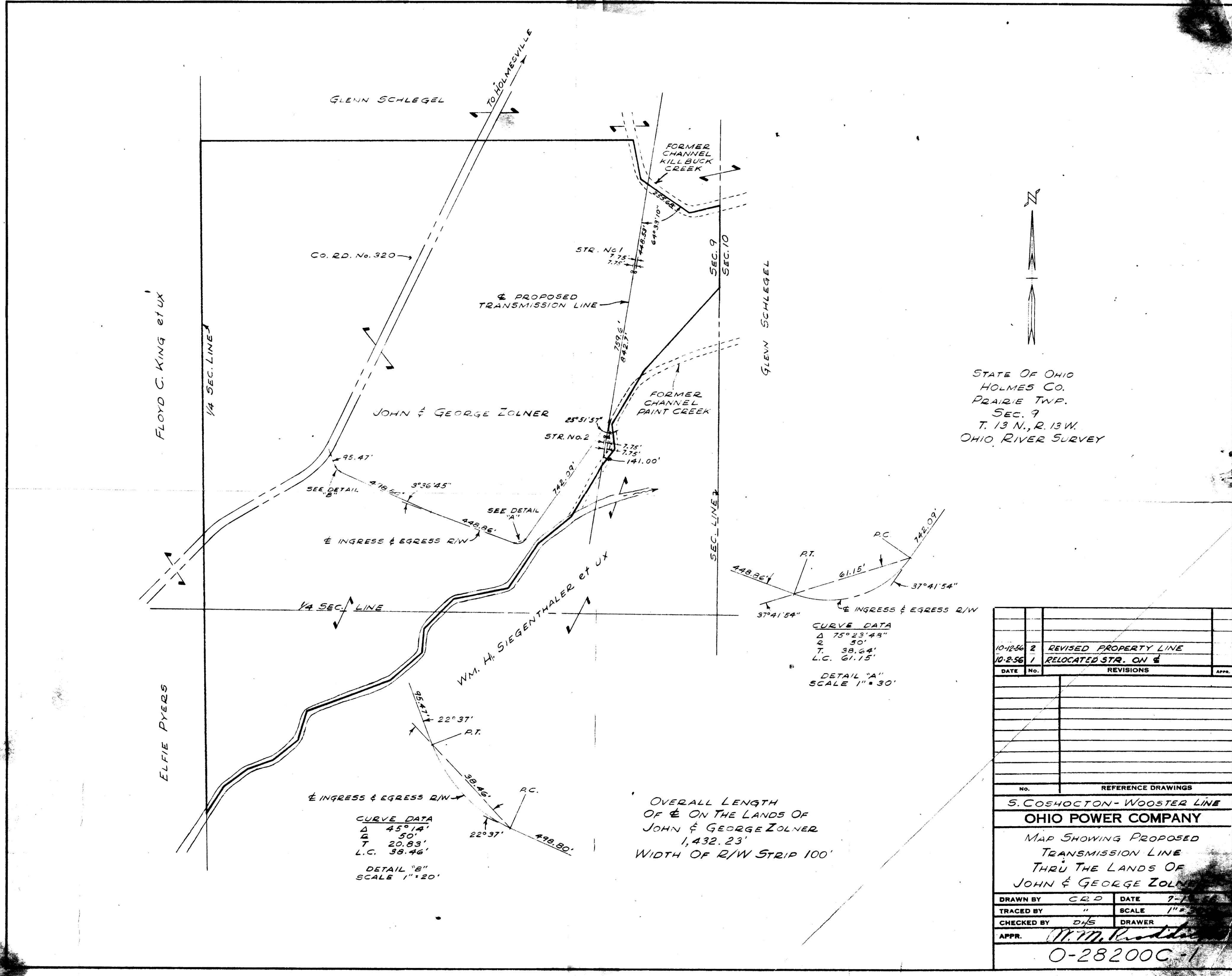


SEE DEED RECORD VOL. 133 PAGE 385-386  
FOR DESCRIPTION OF EASEMENT

51283

Received November 24, 1956  
At 9:30 o'clock... A.M.  
Recorded November 28, 1956  
In Holmes County  
Record of... Plats.....  
Vol. 2... Page 48.....  
C. W. Anderson, Recorder  
Recorder's Fee \$.....



CURVE DATA  
Δ 45° 14'  
R 50'  
T 20.83'  
L.C. 39.46'  
DETAIL "B"  
SCALE 1" = 20'

CURVE DATA  
Δ 75° 23' 48"  
R 50'  
T 38.64'  
L.C. 61.15'  
DETAIL "A"  
SCALE 1" = 30'

OVERALL LENGTH  
OF E ON THE LANDS OF  
JOHN & GEORGE ZOLNER  
1,432.23'  
WIDTH OF R/W STRIP 100'

STATE OF OHIO  
HOLMES CO.  
PRAIRIE TWP.  
SEC. 9  
T. 13 N., R. 13 W.  
OHIO RIVER SURVEY

DATE	No.	REVISIONS	APPR.
10-12-56	2	REVISED PROPERTY LINE	
10-2-56	1	RELOCATED STR. ON E	
REFERENCE DRAWINGS			
S. COSHOCTON - WOOSTER LINE			
OHIO POWER COMPANY			
MAP SHOWING PROPOSED TRANSMISSION LINE THRU THE LANDS OF JOHN & GEORGE ZOLNER			
DRAWN BY	CRD	DATE	7-1-56
TRACED BY	"	SCALE	1" = 30'
CHECKED BY	DHS	DRAWER	
APPR.	M. M. [Signature]		
O-28200C-1			