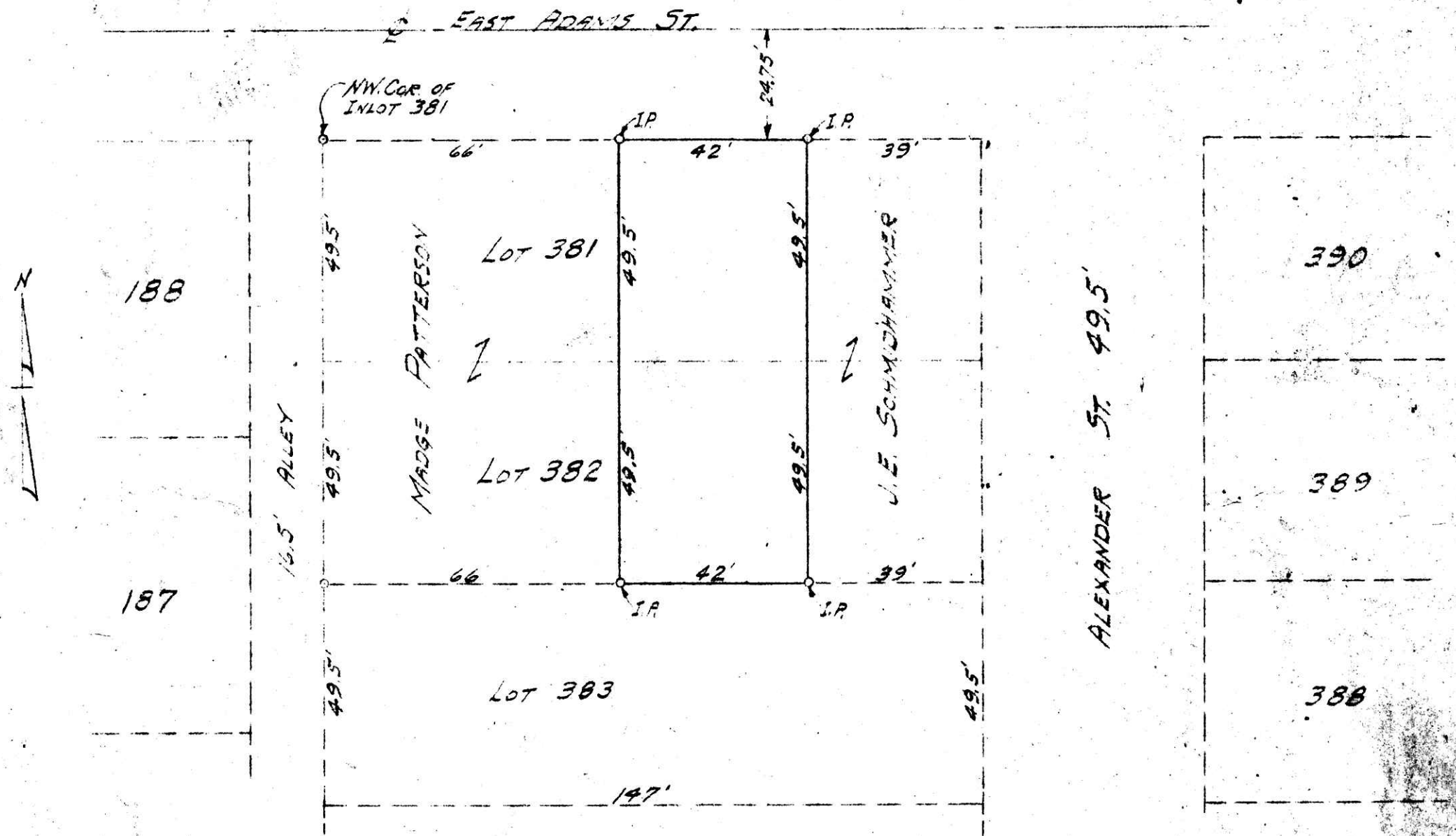


PLAT OF SUBDIVISION OF INLOTS 381 & 382
 VILLAGE OF MILLERSBURG, HOLMES COUNTY, OHIO
 SCALE 1"=30'



I CERTIFY THIS PLAT TO BE TRUE AND CORRECT AS SURVEYED AND STAKED BY ME ON APRIL 23, 1954.

ACCEPTED AND APPROVED BY THE COUNCIL OF THE VILLAGE OF MILLERSBURG, HOLMES COUNTY, OHIO AT A REGULAR MEETING, HELD MAY 3, 1954.

W. C. Pyles
 CLERK

Harold H. Hall
 REG. SURVEYOR No. 3170



47439
 Received May 19, 1954
 At 1:30 O'Clock P.M.
 Recorded May 19, 1954
 In Holmes County
 Record of Plats Vol. 2
 Page 3A
 Evelyn Anderson Recorder
 Recorder's Fee \$1.60