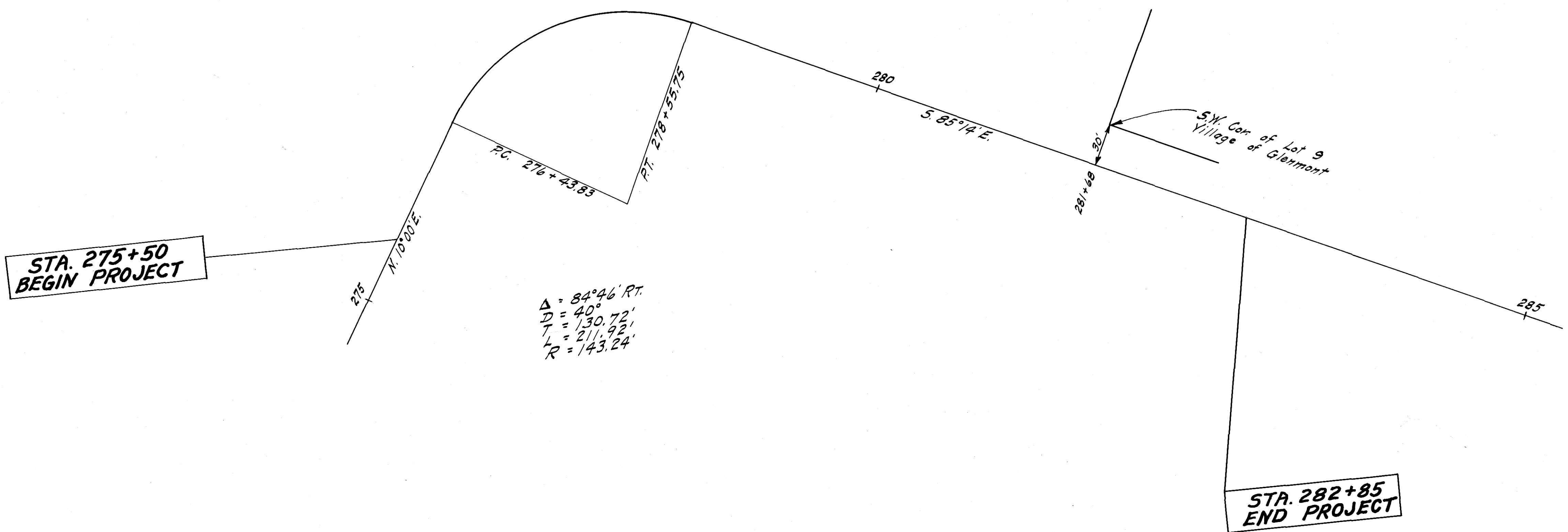
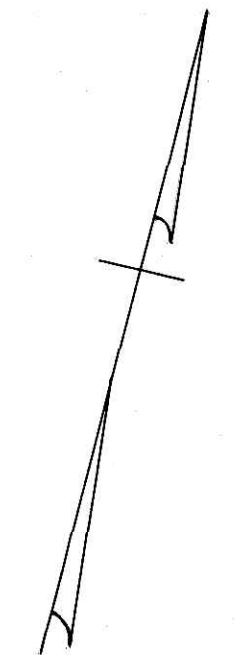


LOCATION PLAN

HOL ~ 520 - (5.22 - 5.34)

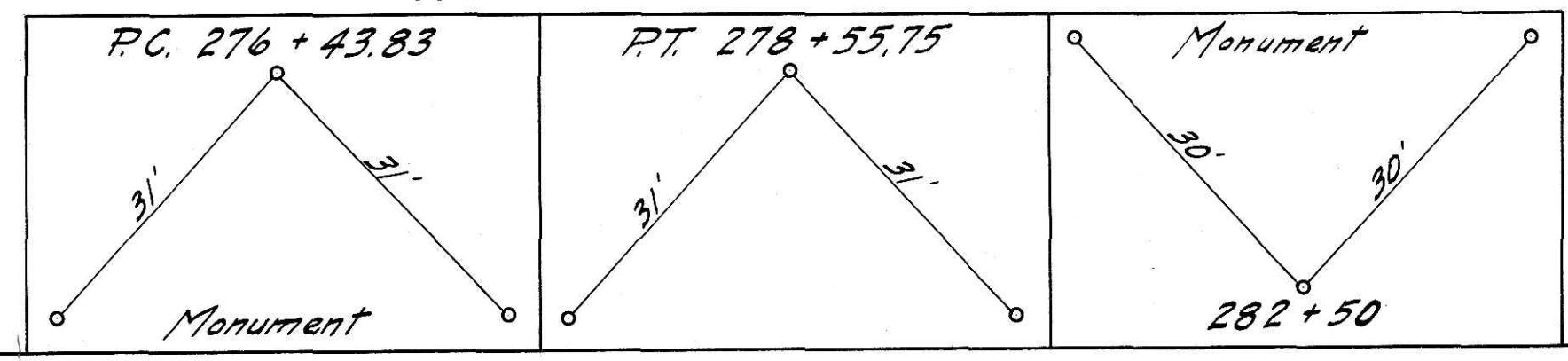
1949

SCALE 1" = 50'



*3111
 Received for record
 Nov 25, 1949
 At 11:00 O'clock A.M.
 Recorded January 10, 1950
 Holmes County Plat Records
 Vol. 2 Page 28
 Evelyn Anderson Recorder
 Fee \$4.00

CENTER LINE REFERENCE MONUMENTS WILL BE SET BEFORE OR AFTER CONSTRUCTION



I hereby certify that this plat is correct to the best of my knowledge and belief.
 Signed Dawson W. Smith Division Engineer
 Date 11-23-49