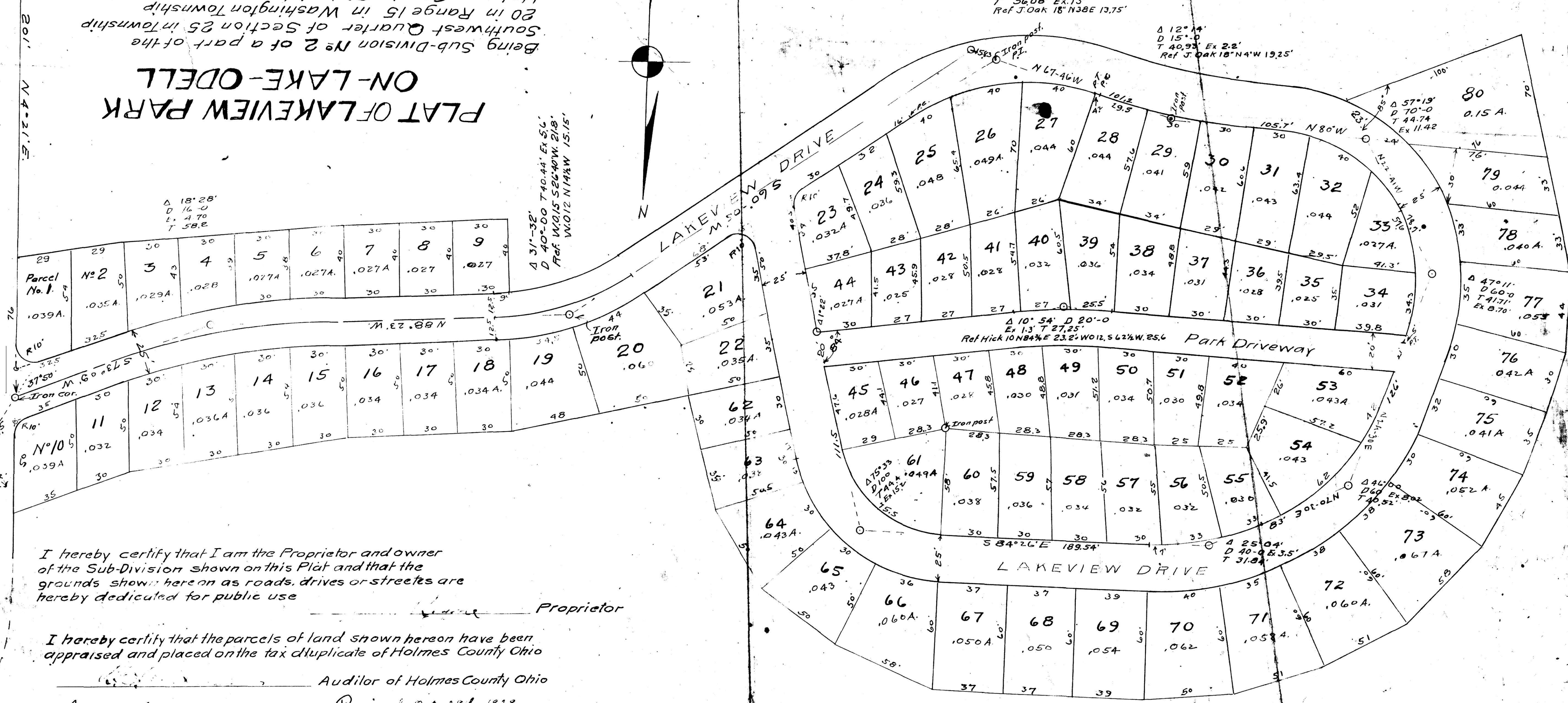
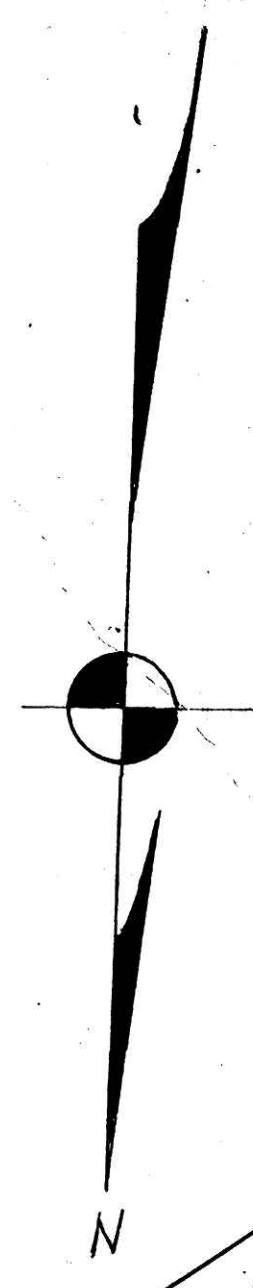


# PLAT OF LAKEVIEW PARK ON LAKE-ODELL

Being Sub-Division No 2 of a part of the  
Southwest Quarter of Section 25 in Township  
20 in Range 15 in Washington Township  
Holmes County Ohio, into parcels as surveyed  
and platted as hereon shown by measure  
and number.  
Total area Lots 3.14 Acres.

J.L. Regne Proprietor  
Scale 30' = 1 inch



I hereby certify that I am the Proprietor and owner  
of the Sub-Division shown on this Plat and that the  
grounds shown hereon as roads, drives or streets are  
hereby dedicated for public use

I hereby certify that the parcels of land shown hereon have been  
appraised and placed on the tax duplicate of Holmes County Ohio

Approved \_\_\_\_\_ Auditor of Holmes County Ohio

Received Oct. 28th, 1929  
Recorded June 25th, 1930  
Rosa S. Linn  
Commissioners of Holmes Co. Ohio

I hereby certify that this Plat is true and correct and represents a  
Sub-Division of a part of the S.W. Quarter of Section 25, T.20, R.15.  
as surveyed and platted by me.

July 28th 1923. W.L. Reidenbach Surveyor