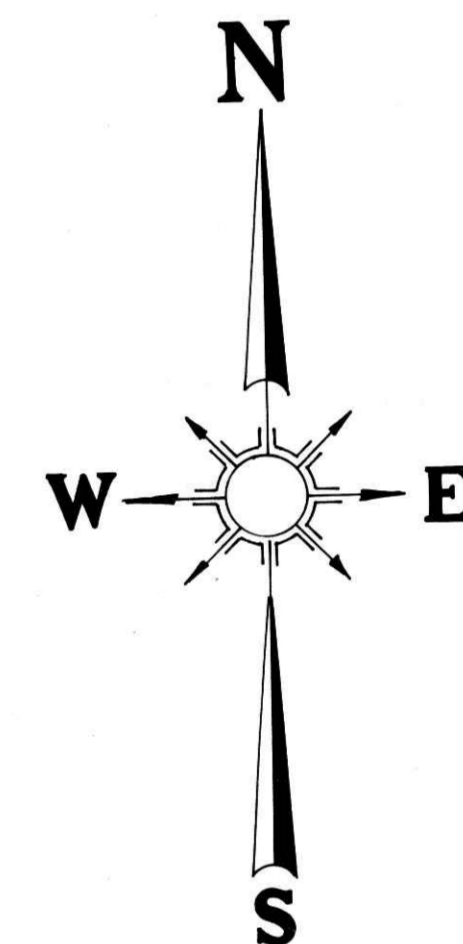
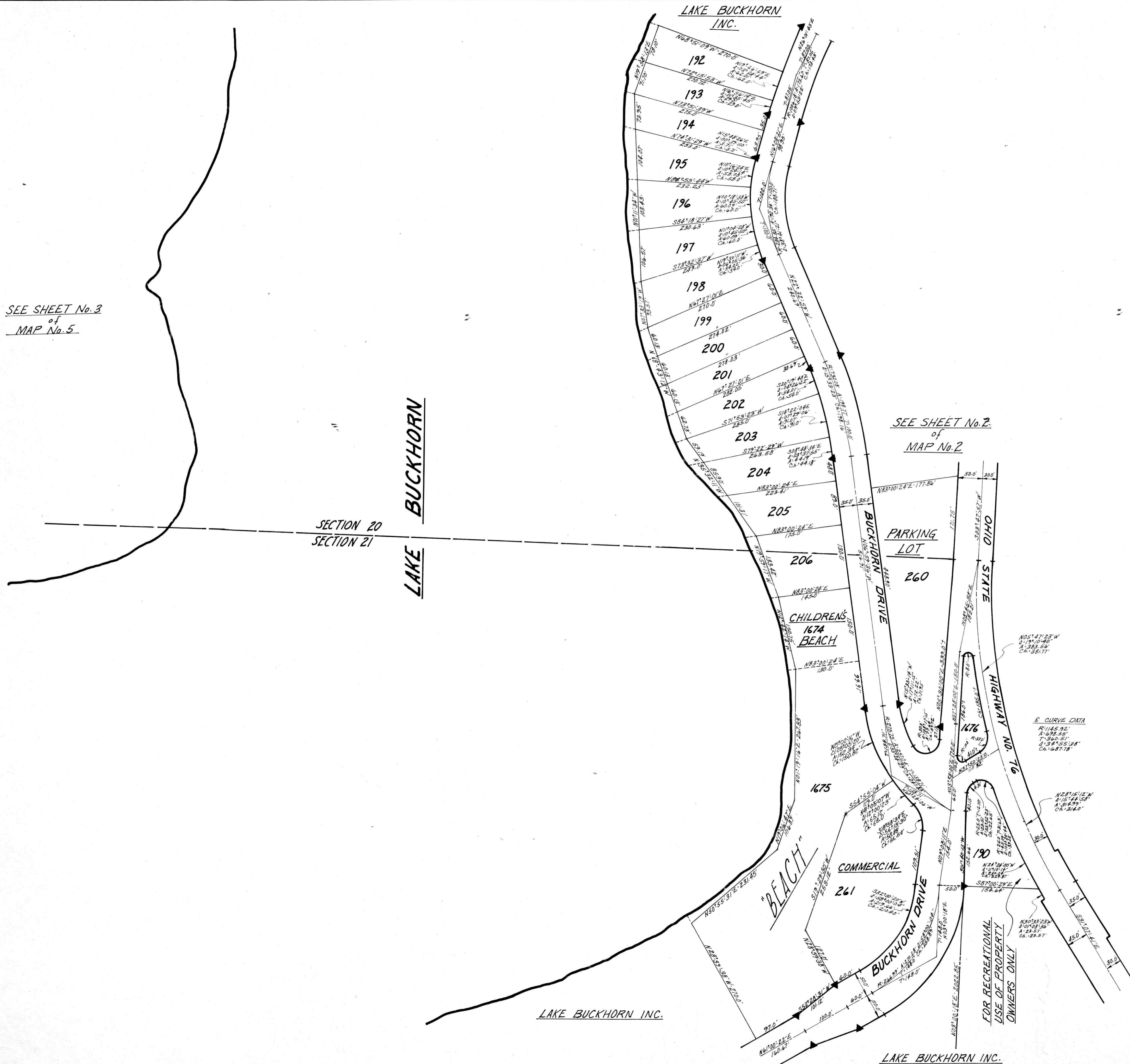


SEE SHEET No. 3
of
MAP No. 5



Note: All lake front lots on water and lot lines extend to the waters edge on the same bearing as the lot line unless otherwise noted.

86218

REC'D: September 25 1968
 AT 2:40 O'CLOCK P.M.
 RECORDED: September 25 1968
 HOLMES CO. Plat Vol. 2 Pg. 2-A
 FEE: \$7.92
 Evelyn Anderson RECORDER

21 = 1/2
**LAKE BUCKHORN
 SUBDIVISION**
 MAP NO. 1 - SHEET 2 OF 2