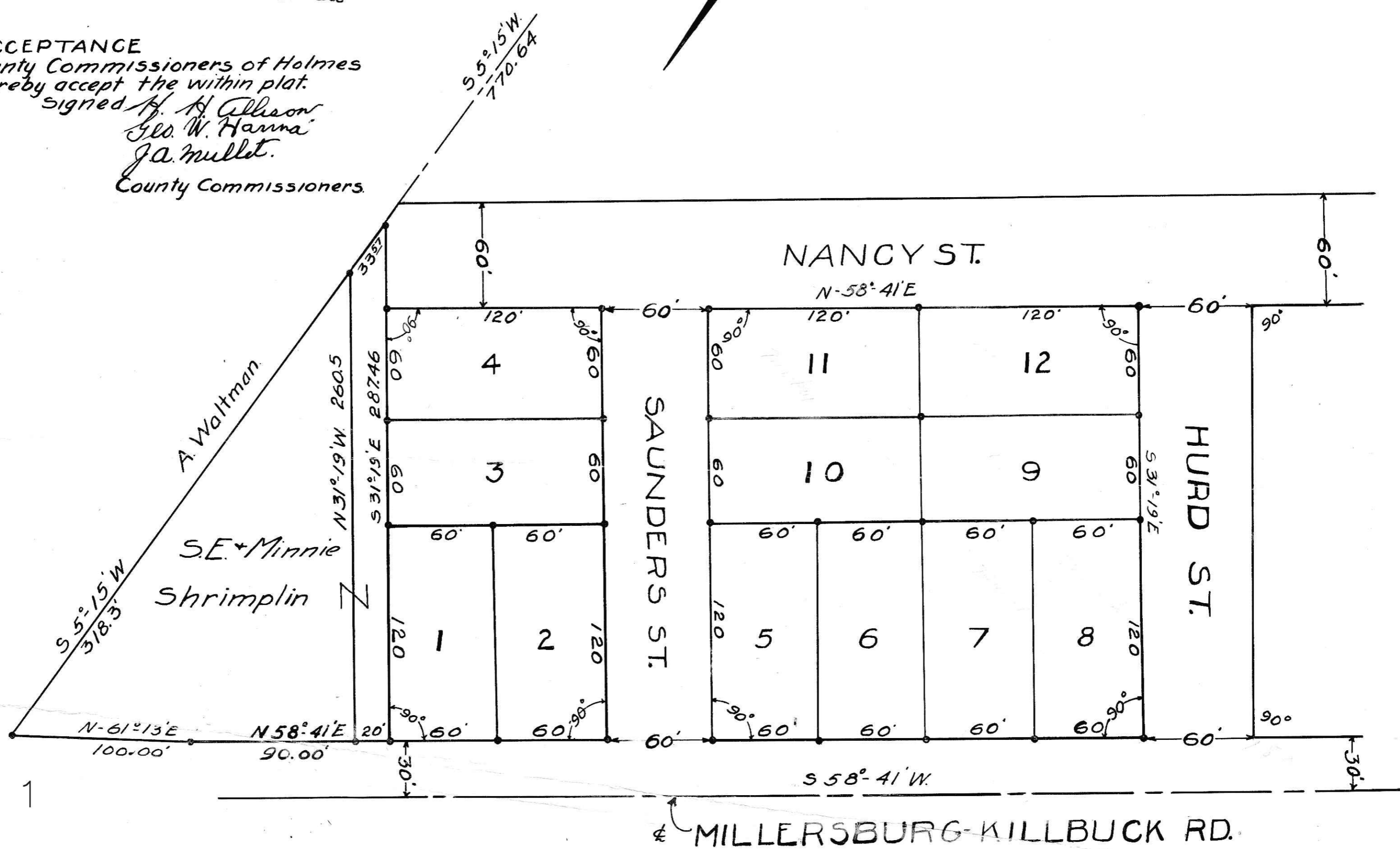


**CERTIFICATION**  
 I, hereby certify that this plat is true and correct,  
 as surveyed by me on Feb 8<sup>th</sup> 1927 for William  
 and J.C. Duncan.  
*Karl Snyder*  
 County Surveyor.

Total Acreage 3.3075 A.  
 Acreage in lots 1.9834 A.  
 " " Streets 1.3223 A.

**DEDICATION**  
 We hereby certify that we are the owners of the  
 lands hereon shown, and that the streets are  
 hereby dedicated to the public for public use.  
 Signed *J. C. Duncan* Owner.  
*William Duncan* Owner.

**ACCEPTANCE**  
 We the County Commissioners of Holmes  
 County hereby accept the within plat.  
 Signed *H. H. Allison*  
*E. W. Hanna*  
*J. A. Mullett*  
 County Commissioners



Plat Vol. 2 Page 1

# 11121

Transferred March 7<sup>th</sup> 1927

*F. D. Slargo*  
 Co. Auditor

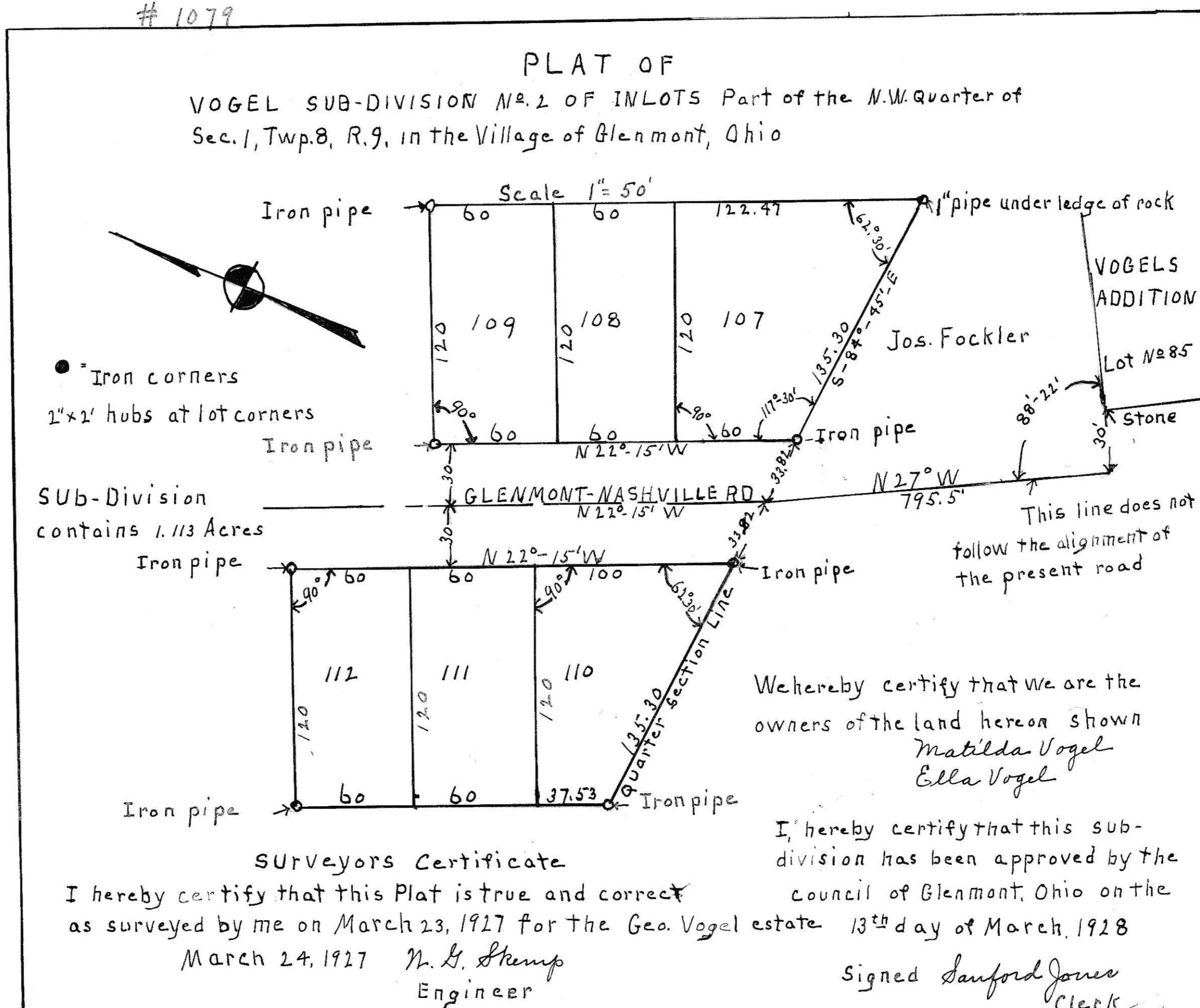
Received & Recorded March 19<sup>th</sup> 1927

*Rose L. Limp*  
 Recorder

**SUB-DIVISION**  
**WILLIAM and J.C. DUNCAN**  
 IN N.W. 1/4 SEC. 6 TWP. 8 RANGE 7  
 KILLBUCK TWP. HOLMES CO.

Scale 1" = 50'  
 • = Iron bar or pipe  
 Bar or pipe placed at all corners.  
 Numbers are parcel Numbers.

# 1079



Transferred Mar 20, 1928

*F. E. Aultman*, Co. Auditor

Plat Vol. 2 Page 1

Received for Record July 17, 1928, at 1 P.M.

Recorded Aug. 31<sup>st</sup> 1928

Fees \$1.85

*Rose G. Limp*, Recorder