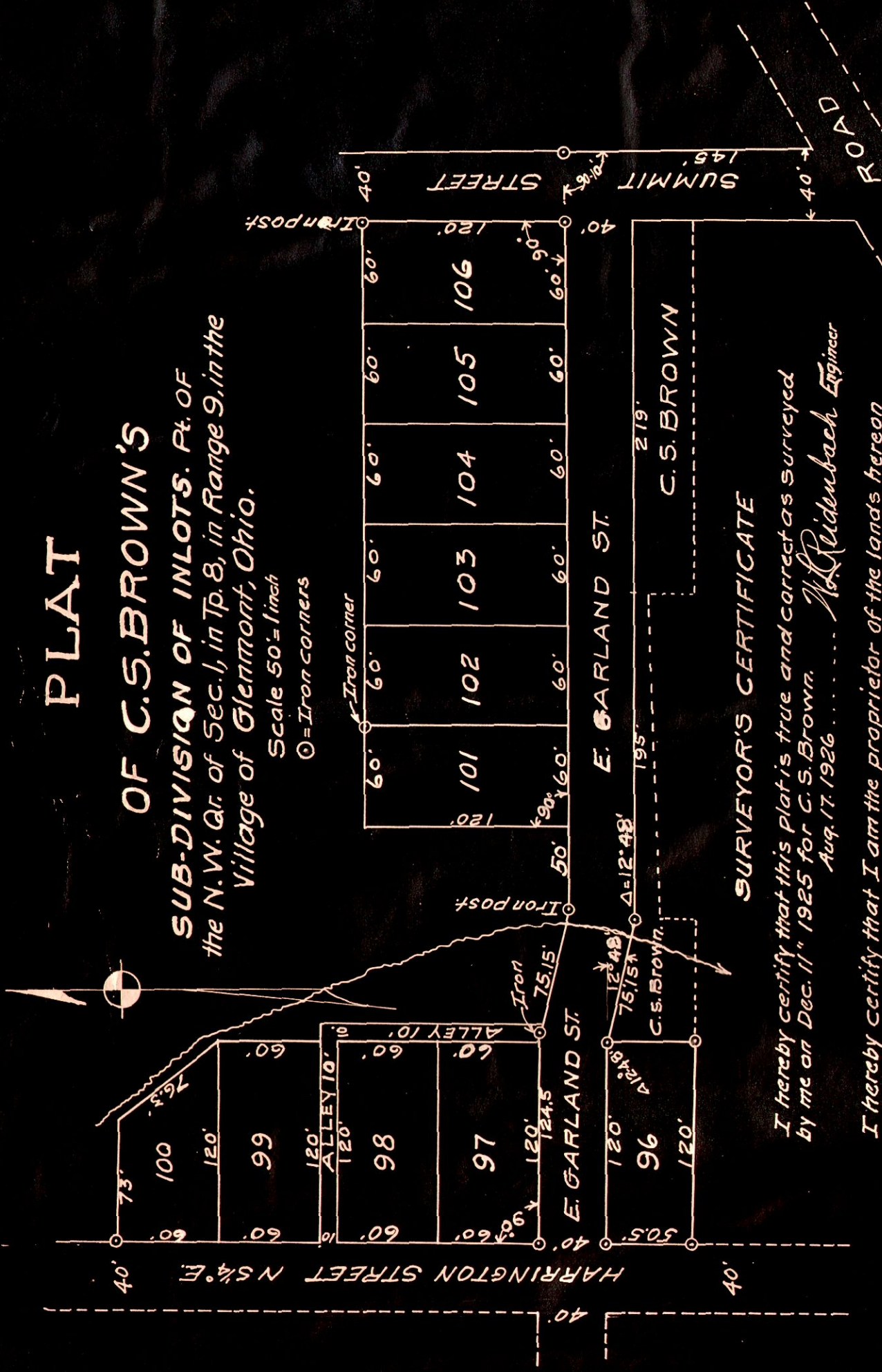


PLAT

OF C.S. BROWN'S

SUB-DIVISION OF INLOTS. Pt. OF
the N.W. Qr. of Sec. 1, in Tp. 8, in Range 9, in the
Village of Glenmont, Ohio.

Scale 50' = 1 inch
O = Iron corners



SURVEYOR'S CERTIFICATE

I hereby certify that this Plat is true and correct as surveyed
by me on Dec. 11th 1925 for C.S. Brown. *W. Ridenbach* Engineer
Aug. 17, 1926

I hereby certify that I am the proprietor of the lands hereon
shown and that the Streets and Alleys are hereby dedicated
for public use

Signed..... Proprietor.

I hereby certify that this Sub-Division has been approved by
the Council of Glenmont, Ohio on the..... day of..... 1926

Signed..... Clerk.

Transferred August 27th 1926
T. D. Glargo
Co. Auditor

Received for Record August 27th 1926
Recorded August 27th 1926
Rose G. Linn
Recorder

Fees \$4.50