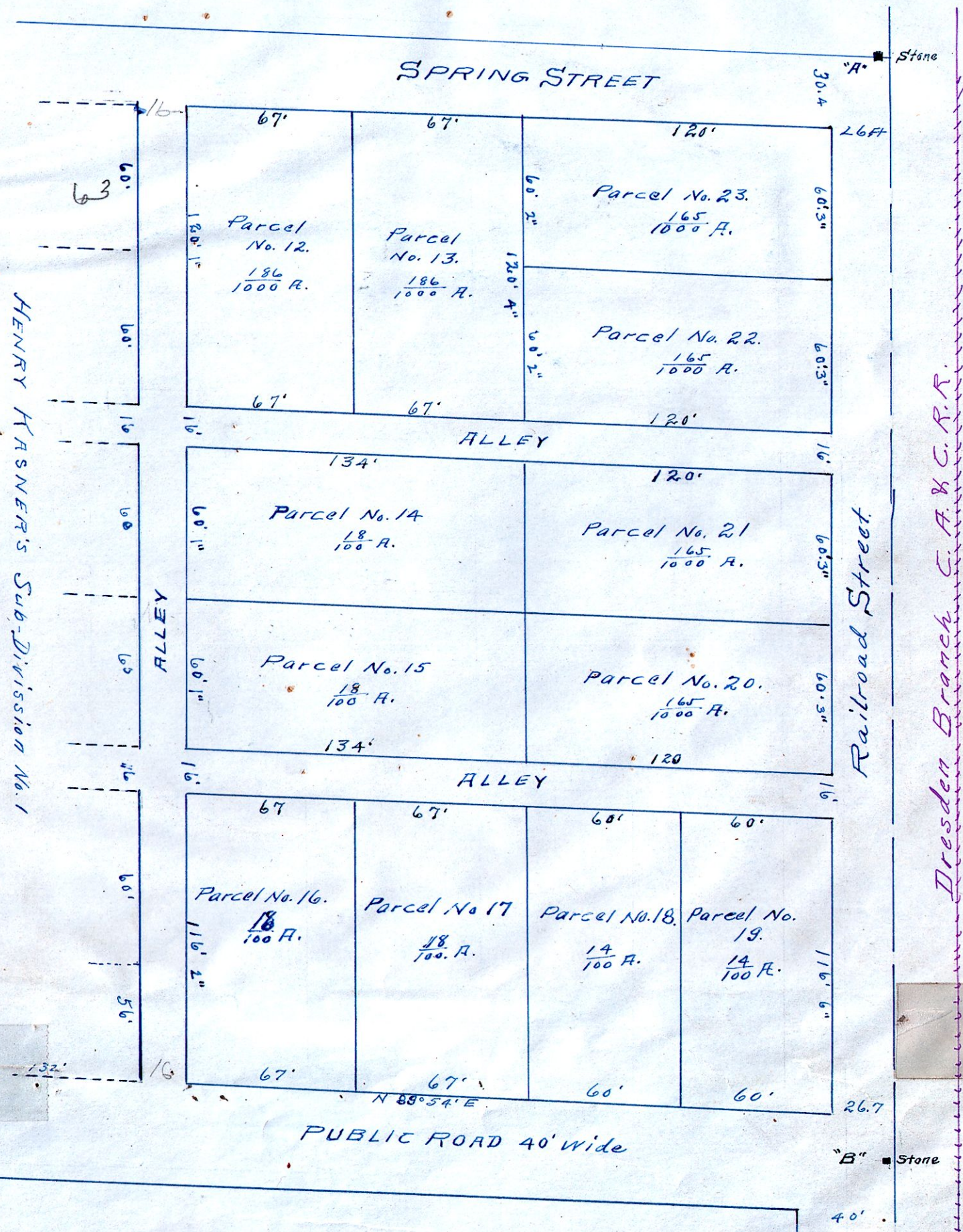




PLAT
 OF
HENRY KASNER'S Sub-Division No. 2.
 IN KILLBUCK TOWNSHIP
 OF PART OF NORTH WEST QUARTER OF SEC. 15, TP. 8, R. 7,
 HOLMES COUNTY, OHIO.

W. L. Reidenbach, Surveyor, 1914.



HENRY KASNER'S Sub-Division No. 1

Dresden Branch C. A. & C. R. R.