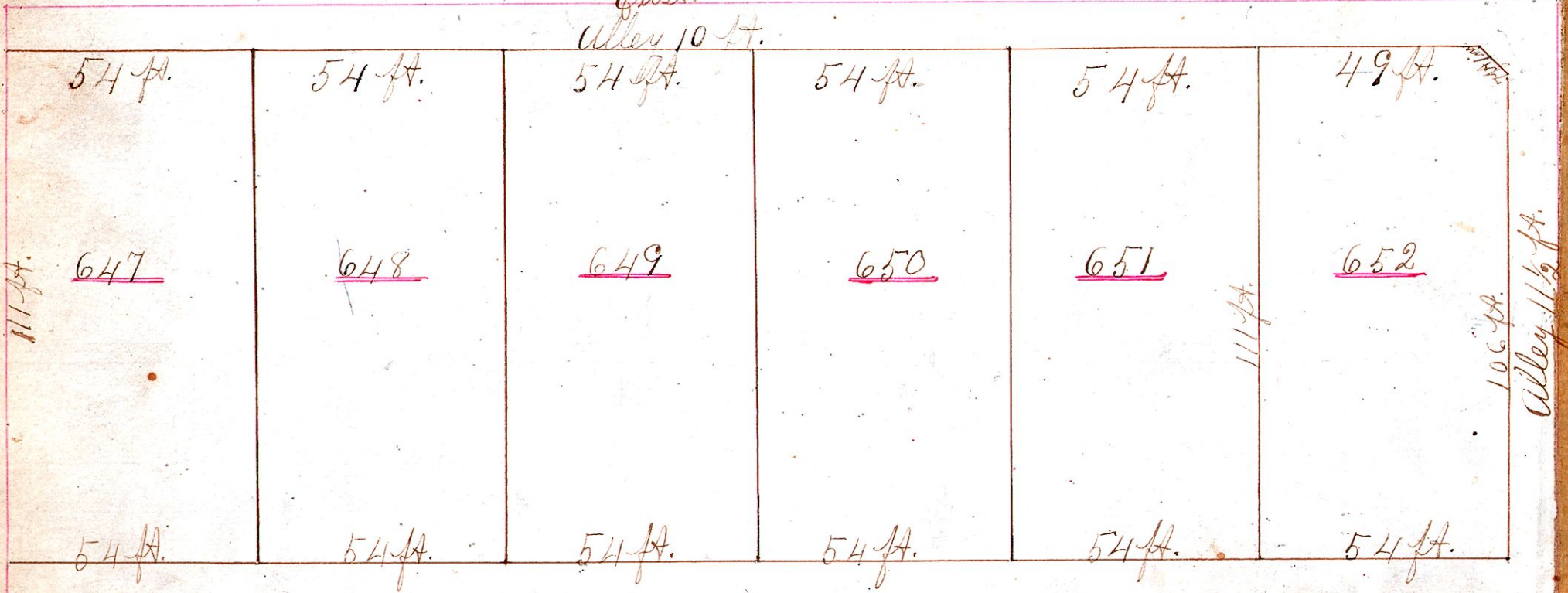


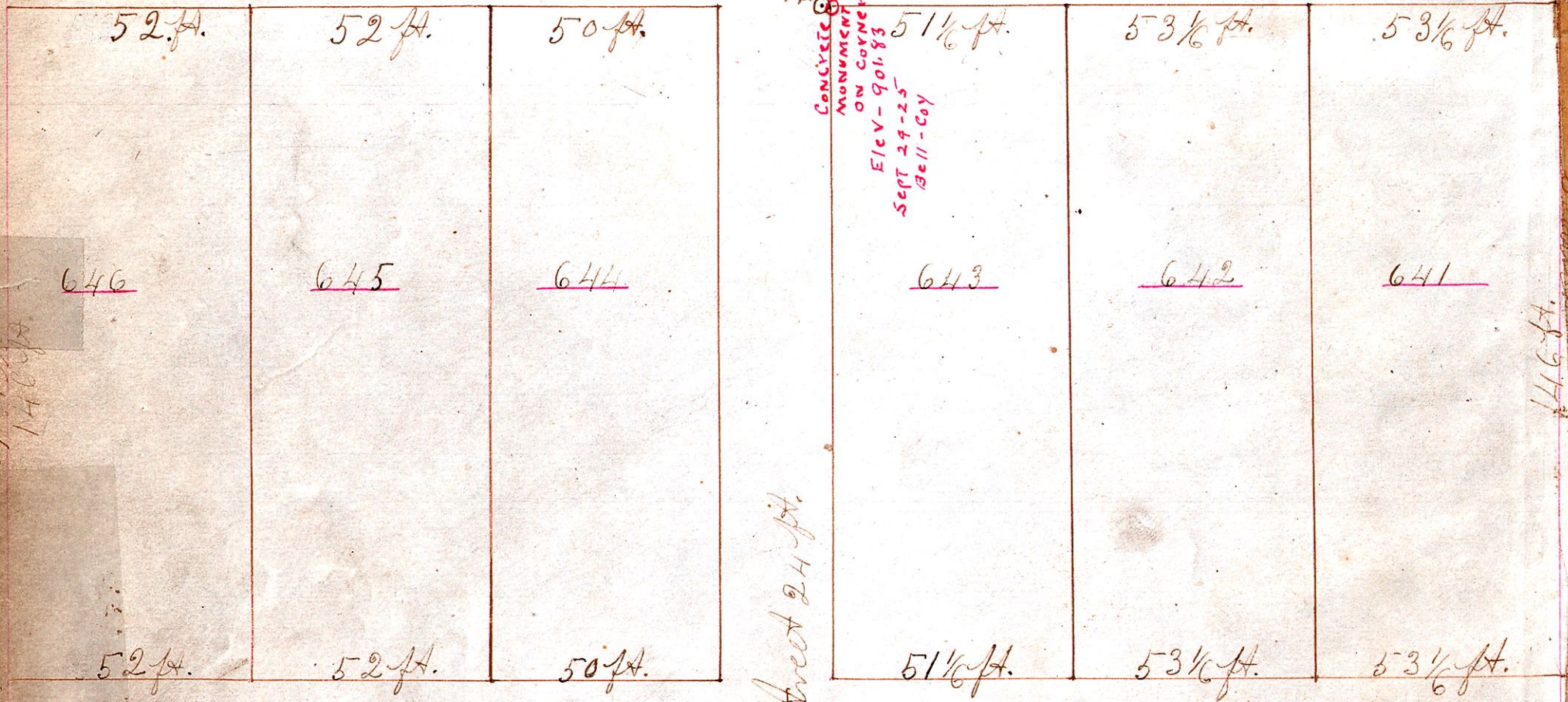
J. C. Calhoun's Addition of Ev. Lots, To Millersburg, O.

East

Alley 10 ft.

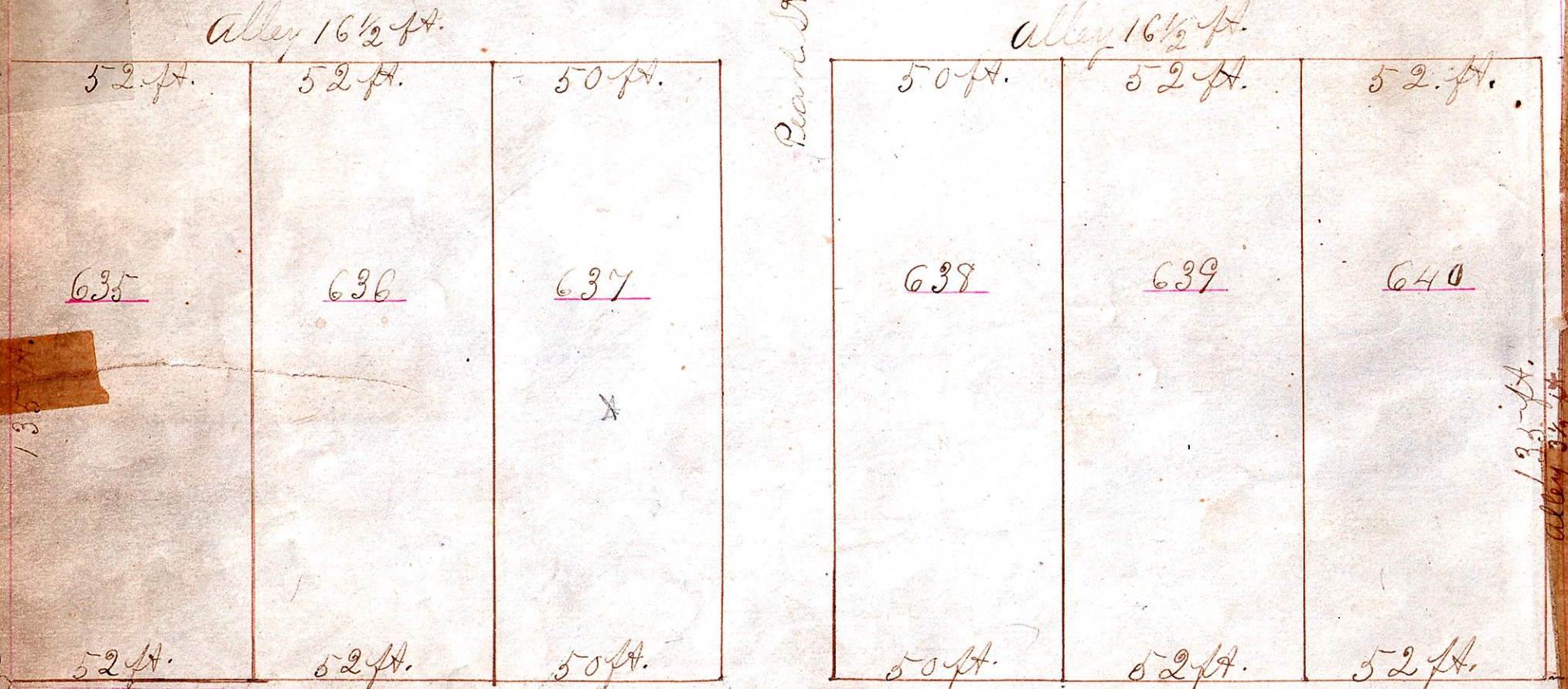


Alexander St. $49\frac{1}{2}$ ft. $S 23\frac{1}{4}^{\circ} W.$



CONCRETE MONUMENT ON CORNER
Elev - 901.83
SEPT 29-25
Bell-Coy

Rear Street 24 ft.



Red line indicates west line of Lot as it now is W. E. F. G. being donated to this village for public purposes.

Scale for Lots
32 ft. to the inch