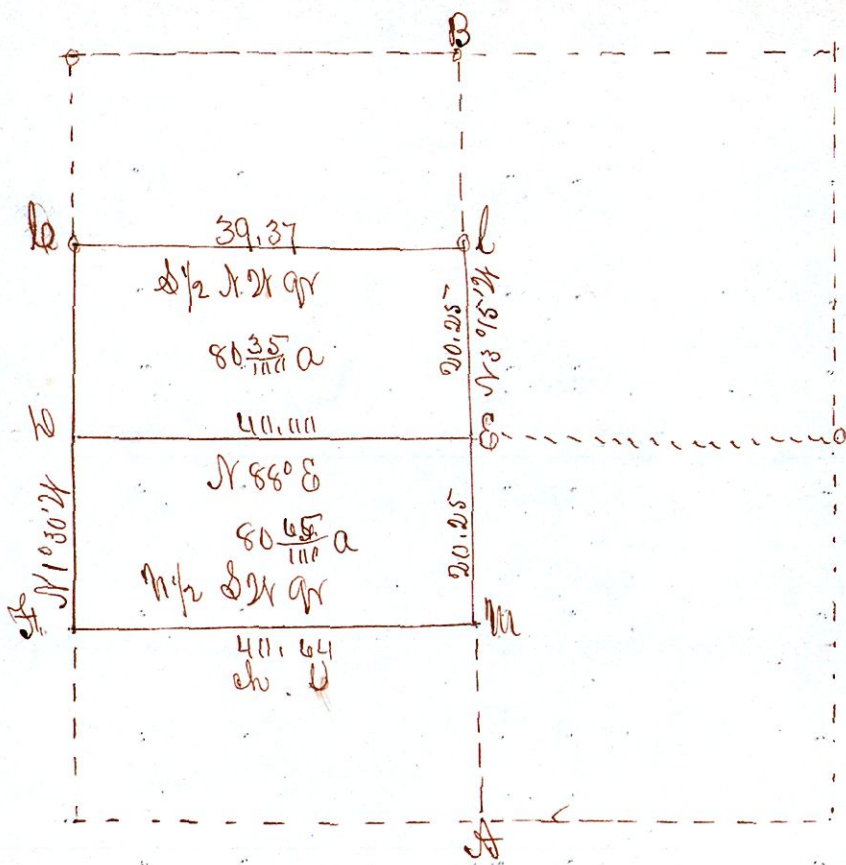


Leonard Matthews Land, S. 34, Sp 15, R 12.

- W. Ash 8 S 52. E 7.
Elm 12. N 52 E 17.
- D. Chestnut 5 N 36 E. 41
Oak 14 S 11 N 33
- Maple 19. S 72. E 61
Sum 4 N 95. E 63
- Maple 36 N 21 E 15
Elm 12. S 74 N 23.
- W. Oak 22. S 52 N 39
S 15 N 17 N 12.



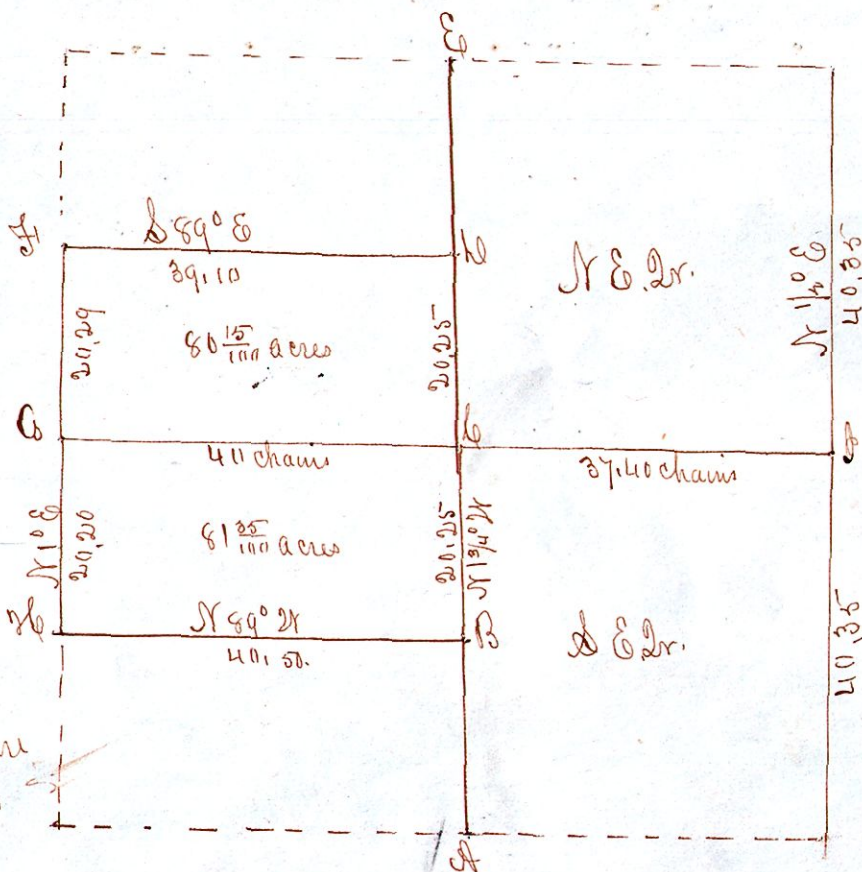
Surveyed the above March 22. AD 1831.

Being the S 1/2 of the N 21 gr & the N 1/2 of the S 24 gr of Sec 34 Sp 15. of R 12. which was surveyed agreeable to an old marked line from to B. and the corner A. stands 10 perches east of the center of the south line of said section and the original bearing trees at said corner A. not to be found.

Samuel Robinson. Surveyor.

Sec 34, Sp 15, R 12.

- Bearing trees at W. Ash 8. S 52. E. 7.
- " " " " Elm 12. N 52. E 17.
- " " " " Q. Chestnut 5 N 36 E 41
- " " " " W Oak 14 S 11 N 33
- " " " " W Maple 19 S 72 E. 61
- " " " " Sum 4 N 95 E. 63
- " " " " W Maple 36 N 21 E. 15
- " " " " Elm 12 S 74 N 23.
- " " " " W Oak 22 S 52. N 39
- " " " " S 15 N 17 N 12.



N.B. Part of the bearing trees are destroyed as they were taken in March 22. 1831. when Robinson made the survey.

The corner B was established by running from D to C and from E to A. all the corners were established by Robinson. Except B. Surveyed the above Nov 29. 1863. Being the S 1/2 of the N 21 gr and the N 1/2 of the S 24 gr of the above described section. containing 161 1/2 acres excepting 91 square perches reserved out of the S E corner of the N 21 gr for a gravel yard. bearing 161 15/16 acres.

Geo S Richeson County Surveyor of Holmes County Ohio.

Received and Recorded September 3^d 1873

Wm. C. McDowell. Recorder