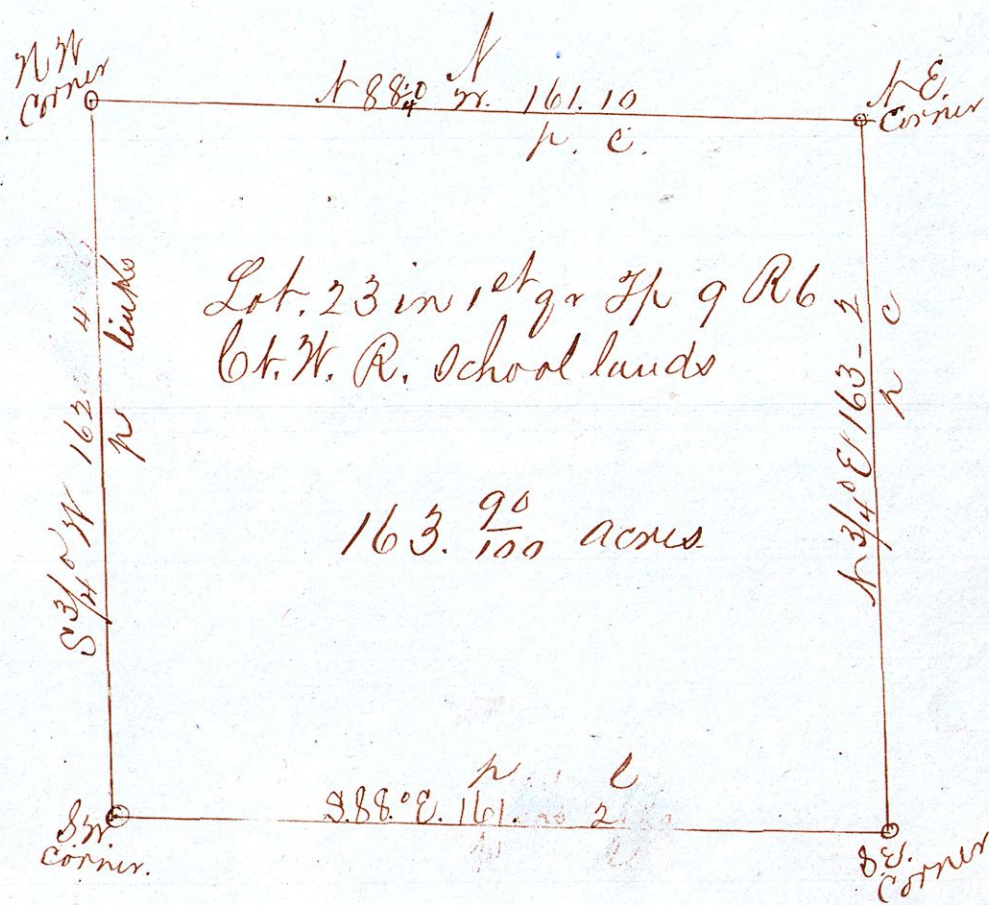


# Frederick Knopf's land

116

116



I do hereby certify that the above is a correct plat of lot No. 23 in the 1st gr Tp: Tp to 9 of Range 6 of the Connecticut Western Reserve school lands: in Holmes County O. April 30th 1868

Samuel Robinson  
Surveyor

Received Sept. 18th 1869 & Recorded Oct 15th 1869

Geo. S. Cook Recorder