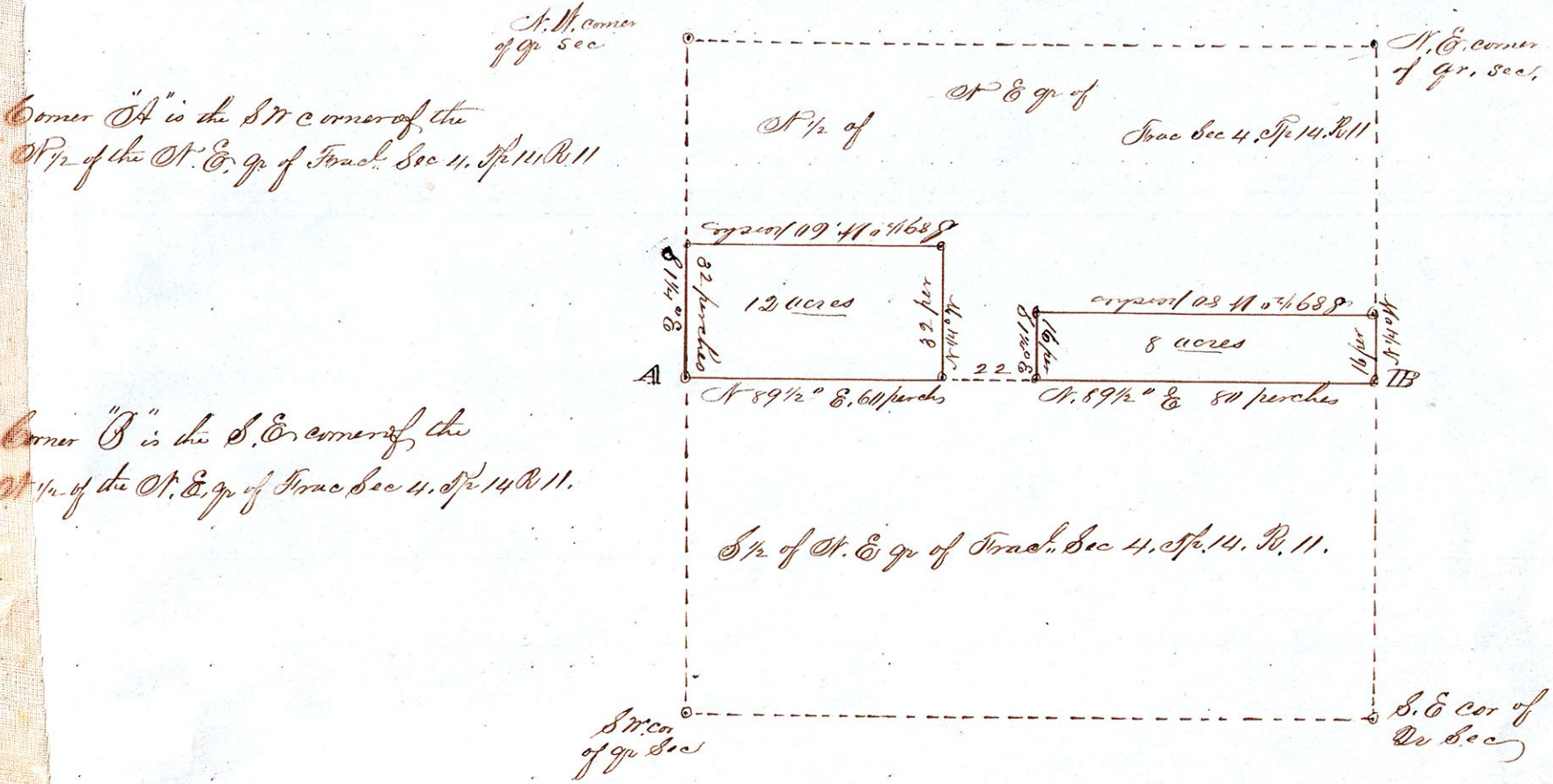


John Silveus' Land from Daniel Winter

(A)

(A)



Corner "A" is the S.W. corner of the N.W. of the N.E. q. of Trac. Sec 4, Tp 14, R 11

Corner "B" is the S.E. corner of the N.W. of the N.E. q. of Trac. Sec 4, Tp 14, R 11.

I do hereby certify that the above is a correct plat of South West part of the North half of the N.E. quarter of Sec 4 in Tp 14, R 11 containing 12 acres, Also the South East part of the North half of the N.E. quarter of Sec 4, Tp 14, R 11, containing 8 acres, March 19, 1857.

Samuel Robison, Surveyor

The above Plat was presented and recorded Nov 12, 1864. Andrew J. Bell Recorder. See Deed Record Vol 26, Page 613.