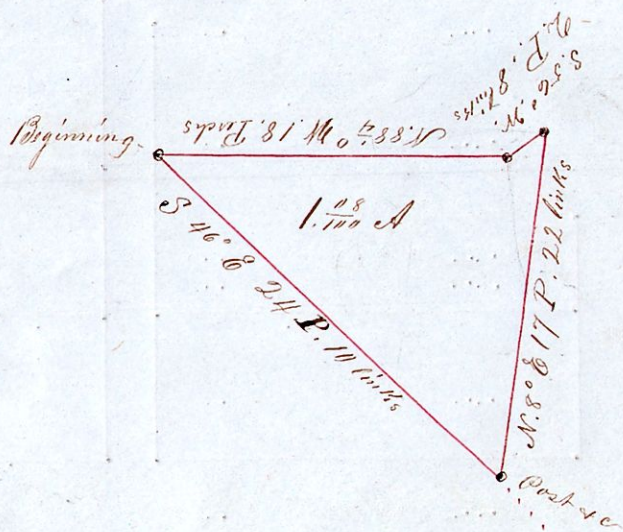


Jacob, H. Raiff Lot, near Millersburg Ohio



I do hereby certify that the above is a correct plat of the West part of Sub-division Cut Lot number 24, containing $1\frac{2}{3}$ A, which is situated East of the original Town Plat of Millersburg the County seat of Holmes County Ohio. August 11th 1860 Samuel Robinson, Surveyor.

Commencing at the most Westward point of said lot.

Presented for platting September 20th 1860 and executed on the same day
A. J. Bell, Recorder