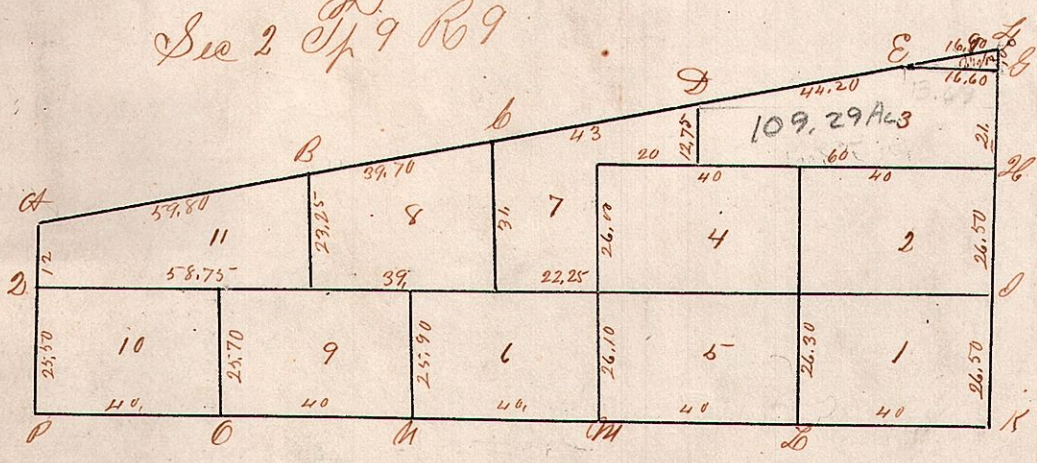


Military

Sec 2 T9 R9



Sec 1				Sec 2					
Part	Tree	diam	braces	Liab	Part	Tree	diam	braces	Liab
A	BOak	18	886	33	A	BOak	18	840	50
"	Maple	12	178	18	"	WOak	10	188	16
B	Hickory	16	163	76	B	Maple	16	146	25
"	do other timber				"	Hickory		815	25
b	Sum	8	East	20	b				
"	do	8	885	12	D	Hickory	10	857	24
D					"	WOak	30	115	33
E	Hickory	4	836	12	E	do	14	145	24
"	BOak	4	123	8	"	BOak	18	812	17
F	Sugar	12	822	13	F	BOak	18	886	33
"	Elm	15	857	12	"	Maple	12	178	18
G	Sugar	12	875	18	G	Sum	12	143	10
"	Beech	17	114	26	"	Hickory	6	841	11
H	WOak	12	815	38	H	do	18	859	33
"	do	18	149	17	"	Sum	12	162	50
I	Hickory	12	133	12	I	WOak	13	147	25
"	BOak	25	844	29	"	do	13	821	24
K					K	Hickory	6	118	16
L	WOak	16	111	55	"	WOak	30	840	36
"	Poplar	12	818	71	M	Hickory	12	132	12
M	WOak	10	123	26	"	do	12	862	20
"	do	15	861	11	N	BOak	3	148	62
N	WOak	8	162	7	"	do	3	144	12
"	WOak	18	872	20	O	WOak	12	170	13
O	do	16	134	30	"	do	10	870	26
"	BO	18	188	55	P	do	13	125	60
P	Hickory	12	111	48	"	BOak	30	850	28
"	do	10	860	25	Q	BOak	12	162	38
Q	Chst	8	140	5	"	WOak	12	149	10
"	Hickory	4	88	6	9, 10 - R	WOak	10	820	18
R	Chst	10	117	31	"	do	12	180	19
"	BOak	6	843	24	8, 11, 8	do	16	157	1
17, 18	BOak	4	888	10	"	do	18	147	12
18, 8	BOak	4	124	13	6, 7, 11	BOak	24	850	57
"	WOak	6	816	30	no other timber				
16, 17	BOak	14	121	58	7, 8, 8	WOak	8	825	11
12, 13, 14	Hickory	12	855	46	"	do	24	130	21
"	WOak	12	187	18	4, 5, 6, 7	Beech	16	176	68
"	do	16	152	34	"	Hickory	18	821	36
8, 4, 17, 18	Hickory	14	825	15	1, 11, 11	WOak	30	835	19
"	WOak	15	832	50	"	Hickory	14	126	15
14, 15, 16, 17					3, 7, 8	WOak	15	863	31
11, 13	BOak	4	868	24	"	do	16	132	20
"	do	16	884	18	2, 4, 11	Hickory	12	134	7
"	Dogwood	6	166	10	"	WOak	10	864	10
11, 13, 14	BOak	6	820	13	1, 2, 4, 5	Chstnut	30	118	25
no other timber					"	BOak	16	853	18
2, 14, 15	WOak	6	138	35					
no other timber									
5, 6, 11, 12	WOak	18	878	25					
"	do	10	819	6					
6, 7, 11, 11	do	18	863	22					
"	Sum	9	868	26					
7, 8, 9, 10	Hickory	10	185	18					
"	Dogwood	5	155	12					
4, 14, 14	WOak	20	852	69					
"	no other timber								
4, 5, 8	Hickory	9	175	3					
"	WOak	24	126	21					
3, 6, 11	do	20	812	17					
"	do	30	120	39					
2, 3, 6, 7	BOak	12	831	37					
"	no other timber								
1, 2, 7, 8	WOak	18	130	27					
"	do	16	861	28					