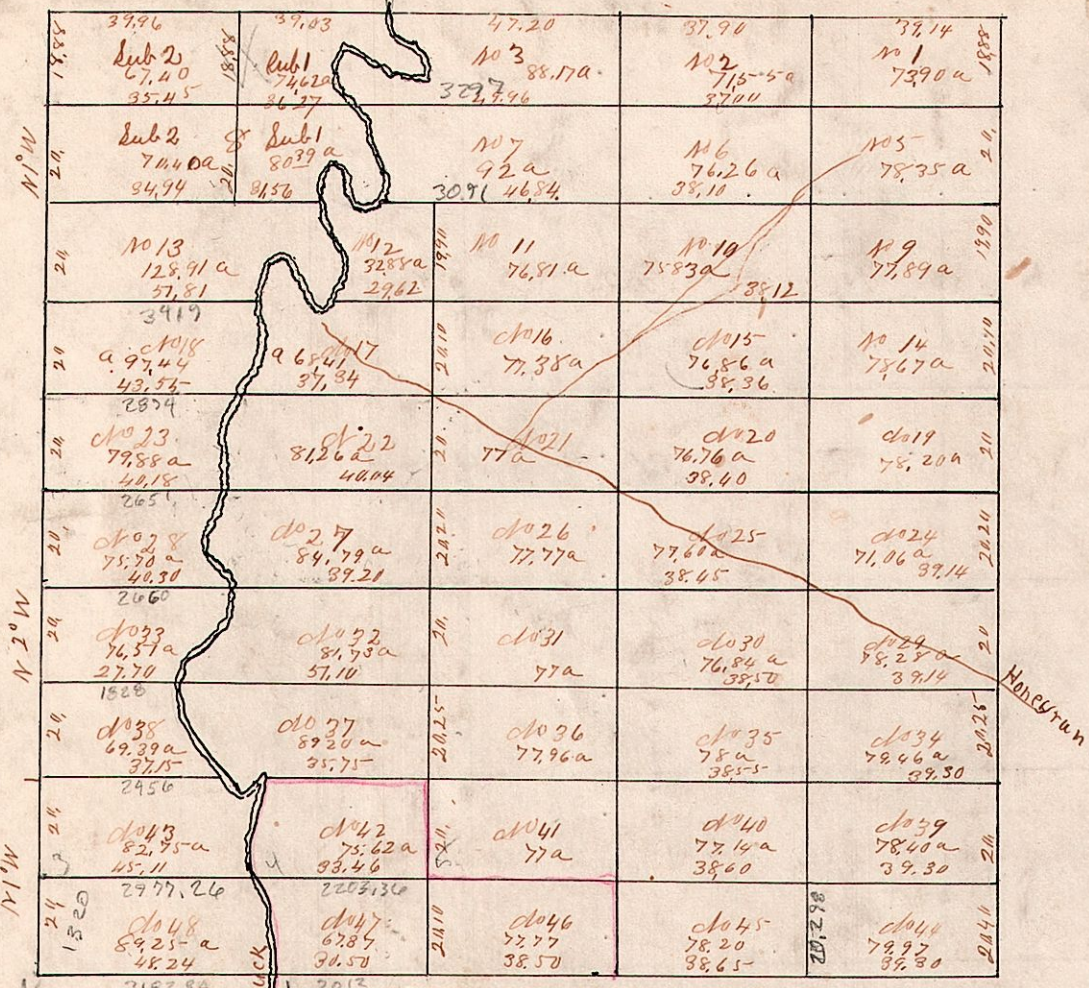


Op 9 R 17. 1st 2 (School)  
1st 2 N. Bandy Township

40  
80



Station	Bearing	Distance	Station	Bearing	Distance
23.28	Ironwood	23 N 12 E	13	11.12	Sugar
15.23	Sugar	18 N 9 E	34	16.17	Elm
13.18	W Oak	13 South	13	14.11	W Oak
8.13	W Oak	13 S 77 1/2 E	35	15.16	B Wood
	W Oak	8 N 14 1/2 E	26	9.14	Buch
	Sub div Post		14.15		
11.2.2	W Oak	13 N 12 E	36	9.14	W Oak
4.8	Birch	N 53 1/2 E	10		R Oak
3.4				11.12	Buch
78	Sugar	N 60 1/2 E	33		
2.3					
6.7	W Oak	S 5 E	21		
1.2	W Oak	N 16 E	33		
5.6	B Oak	N 43 W	18		
5.9	Buch	N 29 1/2 W	35		
	W Oak	N 49 E	44		
5.6	Beech	N 54 1/2 W	27		
9.10	W Oak	S 9 E	24		
6.7	W Oak	N 72 1/2 W	26		
10.11					
42.43	Sugar	N 14 1/2 E	25		
47.48	Ironwood	East	50		
48.49	R Oak	N 11 E	21		
45.46	Ironwood	N 77 W	24		
39.40	Sugar	N 22 E	22		
44.45	W Oak	N 14 W	3 1/2		
39.44	Ironwood	N 76 1/2 E	11		
	W Oak	N 31 1/2 W	54		
34.37	W Oak	N 61 1/2 W	16		
	do	S 34 1/2 E	42		
34.35	Maple	N 10 1/2 E	9		
39.40	do	S 12 1/2 E	8		
35.36	Birch	N 21 1/2 E	10		
41.41	Hickory	S 29 1/2 E	10		
36.37	Elm	S 58 W	7		
41.42	Sugar	N 1 W	17		
32.33	Maple	N 54 E	21		
27.38					
41.32	Elm	N 13 W	20		
36.37	Yppage	S 40 1/2 W	15		
30.31	Sheet	N 76 W	10		
35.36	Maple	N 48 1/2 E	41		
29.30	Beech	S 30 1/2 W	38		
34.35	do	N 12 E	27		
29.34	R Oak	S 35 W	10		
	Birch	S 11 W	53		
29.25					
29.30	Ironwood	See Corner			
35.26	Maple	N 27 W	2		
30.31	Sugar	S 56 1/2 W	26		
26.27	Beech	N 65 1/2 E	40		
31.32	W Oak	S 48 E	42		
22.23	Elm	N 5 1/2 E	25		
27.28	do	S 25 E	52		
21.22	Sugar	S 67 W	11		
26.27	do	N 56 1/2 E	34		
21.21	Sugar	N 39 E	53 1/2		
25.26	do	S 6 E	55		
19.20	W Oak	S 74 1/2 W	10		
24.25	do	N 44 W	5		
19.24	Beech	S 48 1/2 W	6		
	Elm	N 44 1/2 W	5		
14.19	W Oak	N 44 W	31		
	Birch	S 11 1/2 W	26		
14.15	do	N 10 1/2 E	18		
19.20	W Oak	S 26 1/2 E	34		
15.16	Elm	S 58 E	21		
21.21	do	S 45 W	48		
16.17	Post	at on field			
21.22					
17.18	Elm	N 36 E	44		
22.23	W Oak	S 51 E	31		
12.17	W Oak	N 88 E	24		
	do Maple	S 13 1/2 W	53		

1907. Logwood 6" N 10 E.

The meanderings of Killbuck Creek on the East Side

Station	Bearing	Distance	Station	Bearing	Distance
1	S 6 W	5.50	7	S 33 1/2 W	5.00
2	S 43 1/2 E	1.00	8	S 16 1/2 W	4.00
3	N 78 E	1.50	9	S 94 W	2.50
4	N 46 E	3.50	10	S 9 E	1.50
5	S 88 1/2 E	1.70	11	S 32 1/2 E	1.80
6	S 44 1/2 E	1.70	12	S 13 1/2 E	3.30
7	S 53 1/2 E	5.70	13	S 20 1/2 E	1.10
8	S 19 W	2.70	14	to the line of	27
9	S 55 1/2 W	3.50	15	to the corner of	47
10	S 74 1/2 W	3.70	16	S 7 E	2.20
11	N 66 1/2 W	2.80	17	South	1.30
12	N 32 1/2 W	8.70	18	S 23 1/2 W	2.00
13	N 51 1/2 W	1.10	19	S 64 1/2 W	1.70
14	West	.70	20	S 86 W	4.00
15	S 31 1/2 W	1.20	21	S 86 1/2 W	1.50
16	S 9 E	2.00	22	S 18 1/2 E	1.50
17	S 29 E	2.40	23	S 21 1/2 W	5.20
18	S 35 1/2 E	4.00	24	S 17 1/2 E	.80
19	S 31 1/2 E	5.00	25	S 19 1/2 E	2.30
			26	S 35 E	1.02
			27	to the S. W. Corner of Lot No 147 on East Bank of Killbuck River	
			28		
			29		
			30		
			31		
			32		
			33		
			34		
			35		
			36		
			37		
			38		
			39		
			40		
			41		
			42		
			43		
			44		
			45		
			46		
			47		
			48		
			49		
			50		
			51		
			52		
			53		
			54		
			55		
			56		
			57		
			58		
			59		
			60		
			61		
			62		
			63		
			64		
			65		
			66		
			67		
			68		
			69		
			70		
			71		
			72		
			73		
			74		
			75		
			76		
			77		
			78		
			79		
			80		
			81		
			82		
			83		
			84		
			85		
			86		
			87		
			88		
			89		
			90		
			91		
			92		
			93		
			94		
			95		
			96		
			97		
			98		
			99		
			100		