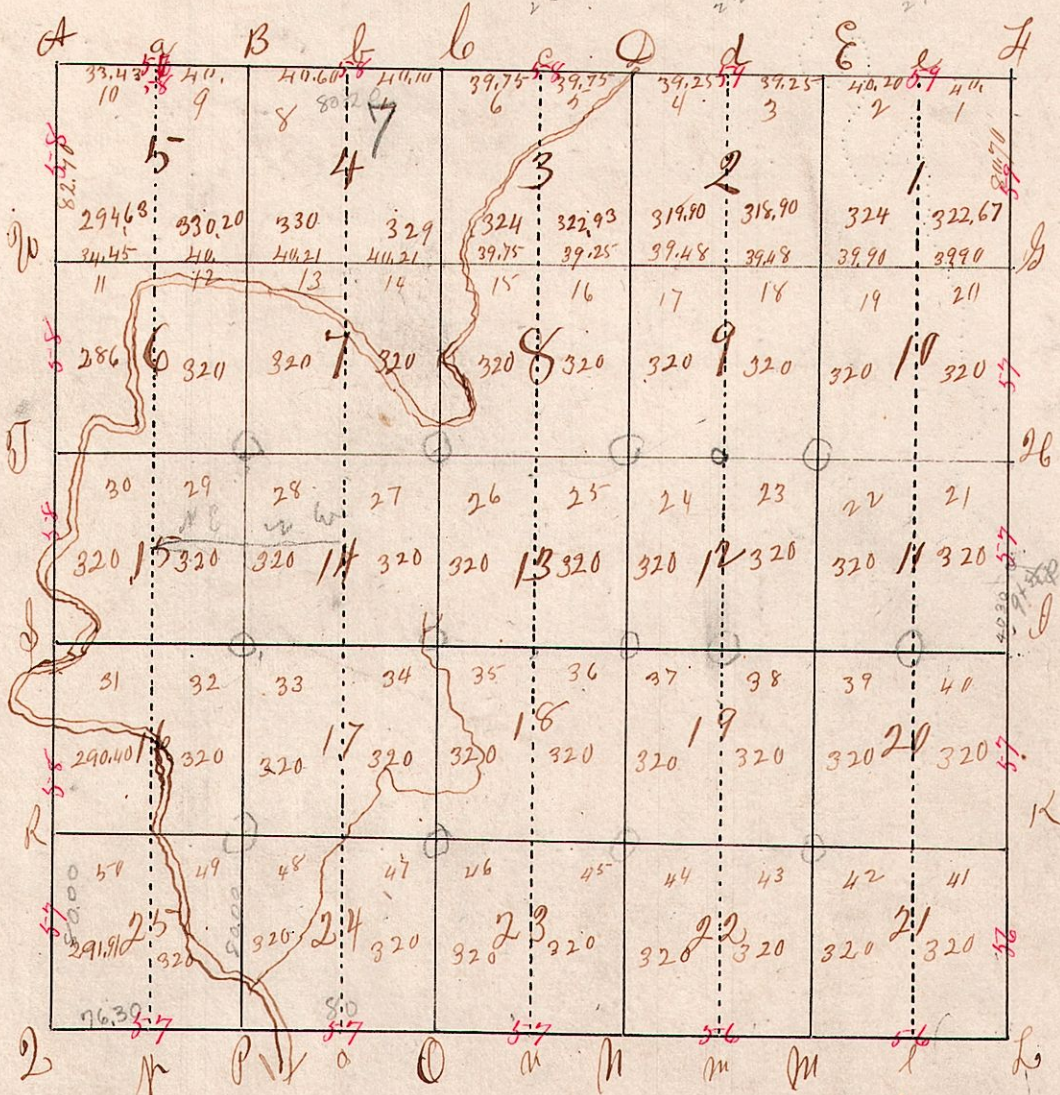


Township & Range 7 Congress



The red figures on the lines refer to pages where additional notes may be found

Plot	B Trees	diam	bearing	Dist	Plot	B Trees	diam	bearing	Dist
A	Beech	24	S34E	18	B	Beech	18	S77E	7
"	Beech	12	S73W	17	"	WOak	20	N30E	35
a	Poplar	12	S36W	23	"	do	34	N51W	15
"	do	20	N42W	19	"	Maple	7	S52E	27
B	BOak	26	S79E	43	"	Hickory	14	S42W	5
"	Beech	14	N8W	22	"	BOak	8	N58E	34
"	Beech	16	S85E	38	"	WOak	16	N39W	12
"	Poplar	7	N27W	11	"	WOak	14	S73W	32
b	Beech	20	S81W	44	"	Hickory	28	S53E	5
"	Elm	12	S77E	30	"	Maple	12	S50W	22
C	Elm	20	S37W	38	"	BOak	16	S64E	28
"	WOak	20	S36E	67	"	Chert	18	N64W	40
D	Maple	20	N67W	13	"	BOak	24	S33E	36
"	BOak	12	S40E	5	"	Poplar	30	S77W	28
d	Sugar	10	S50E	15	"	WOak	30	N45W	1
"	WOak	24	S31W	23	"	do	18	S81E	6
E	Elm	10	S26E	9	"	Elm	12	N27W	8
"	Sugar	10	S40W	40	"	B-Oak	14	S11W	32
e	WOak	18	N35W	18	"	Beech	12	S50E	8
"	WOak	24	S58W	25	"	do	14	N13W	43
F	Hickory	20	S79W	11	"	WOak	30	S67W	6
"	"	12	S66E	18	"	do	30	East	20
f	BOak	20	S10W	13	"	Maple	14	N74W	22
"	Beech	12	N65W	27	"	Maple	16	N65E	11
g	Sugar	14	S31W	9	Half Sec Corners				
"	Sugar	14	S31E	14	39.46	WOak	10	S67W	10
"	Hickory	14	N41W	36	41.42	do	24	N7E	25
"	WOak	30	N42W	37	37.38	BOak	12	N47W	27
K	Elm	20	N40E	17	43.44	do	10	S32W	20
"	Elm	40	N60W	41	35.36	WOak	16	N3W	13
L	Hickory	26	N40W	18	45.46	BOak	24	S40W	49
"	Hickory	12	S42W	18	33.34	Sugar	20	N62E	3
"	Elm	18	N13W	32	47.48	Elm	18	N33W	35
"	do	12	South	9	31.32	Lynn	16	S26W	25
M	Beech	12	N47W	18	49.50	do	16	S58E	20
"	Sugar	12	S71E	28	29.30	WOak	14	S32E	8
n	Maple	14	N52W	35	34.32	Beech	10	N23W	17
"	Beech	10	N53E	23	27.28	Beech	11	S22W	43
N	WOak	24	N57W	24	53.34	Beech	12	N15E	31
"	WOak	24	N57E	70	25.26	Sugar	16	N30W	4
O	Beech	24	N14W	14	35.36	WOak	18	S2E	10
"	WOak	30	N58E	53	23.24	Maple	12	N55E	10
o	WOak	26	N47W	11	37.38	WOak	14	S57E	17
"	WOak	20	S9E	58	21.22	WOak	30	West	6
o	Elm	18	N5E	10	29.40	WOak	18	S6E	30
p	WOak	7	S26E	19	19.20	Maple	12	S8E	34
"	WOak	14	East	17	21.22	Beech	14	S38W	53
"	Elm	9	N73W	3	17.18	WOak	30	S5E	41
p	WOak	12	West	1	23.24	do	14	S67W	42
"	WOak	8	N19E	19	15.16	BOak	30	S62W	19
q	Hickory	12	Corner	60	35.26	Beech	24	N47E	31
"	Elm	16	N29E	46	13.14	Beech	18	N77E	25
R	WOak	36	N40E	17	27.28	Poplar	20	N26W	31
"	WOak	20	S4E	45	11.2	WOak	16	S27W	17
s	WOak	12	S29E	8	29.30	Beech	12	N5W	26
"	Hickory	8	S87W	8	9.10	Wash	18	S13W	21
L	Sugar	20	N49W	30	11.12	Elm	14	S83W	27
"	Elm	15	S26E	41	7.8	Sugar	14	N65E	28
W	Beech	18	S50E	30	13.14	do	12	S44W	19
"	Beech	12	N39E	42	5.6	Beech	12	N71E	6
Anterior Sec Corners									
19.20	WOak	12	West	18	3.4	BOak	20	S47W	23
21.22	do	30	N80E	37	17.18	W Oak	12	S49E	19
18.19	do	12	S42E	14	1.2	WOak	20	S71E	12
22.23	do	30	S8W	35	19.20	WOak	26	N12E	24
16.18	Elm	24	N3W	21					
23.24	Saparas	12	S8W	20					
24.25	WOak	14	N20W	14					
16.17	Beech	9	S22E	35					