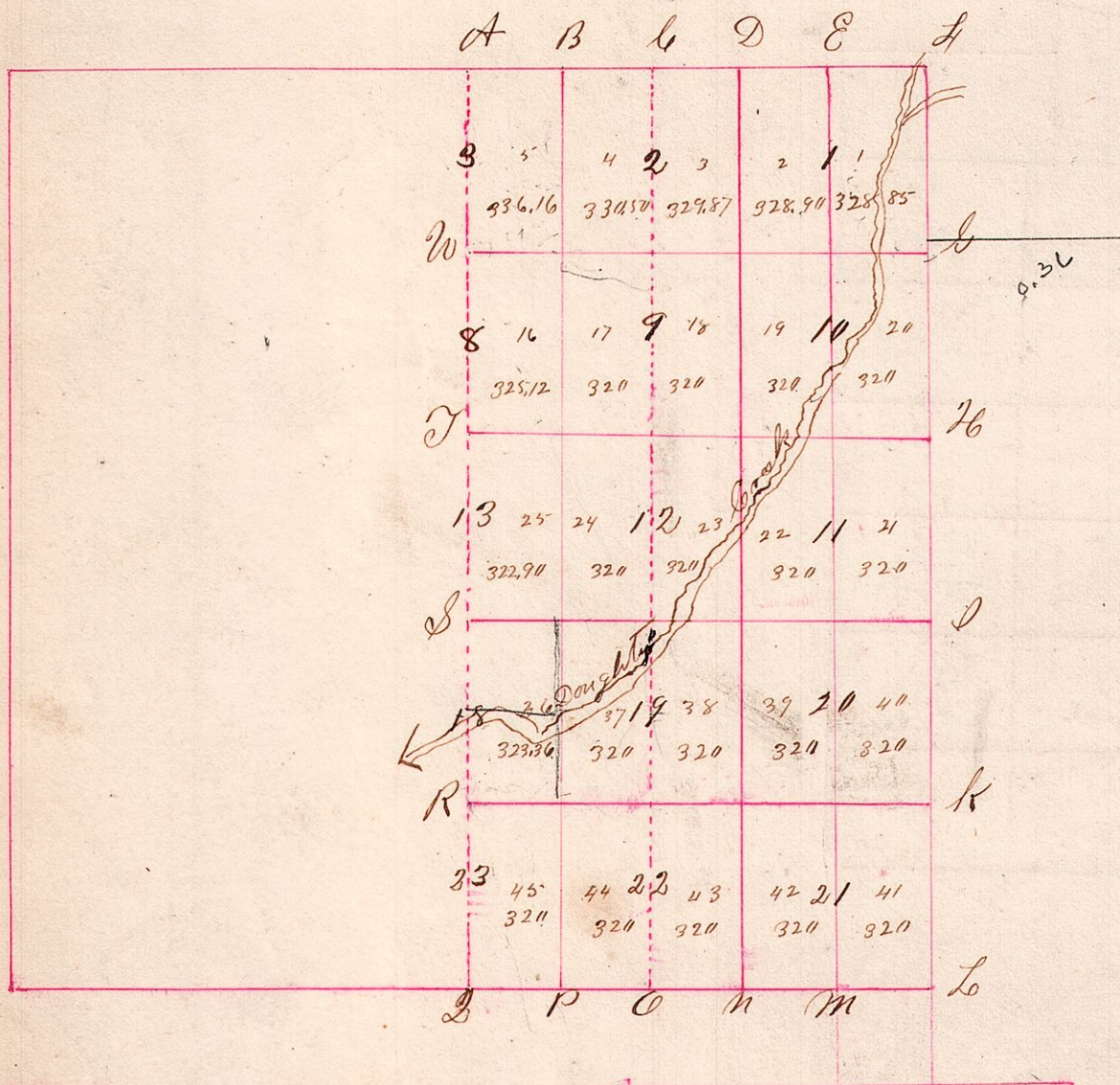


Township 8 Range 6 (Congress)



Point	Bears	dms	Bound	Links	Point	Bears	dms	Bound	Links
A	Beech	7	N 21 E	14	19, 20	W Oak	4	N 68 W	20
"	B Oak	32	S 53 E	28	21, 22	Maple	20	S 73 E	31
B	Maple	18	S 41 W	20	17, 18	do	20	N 75 W	32
"	do	12	N 45 E	14	23, 24	Hickory	20	S 38 E	31
C	Chest	30	S 7 1/2 E	45	1, 2	B Oak	15	N 31 E	7
"	do	16	N 22 E	37	19, 20	Hickory	12	S 78 E	32
D	W Oak	30	S 67 E	29	3, 4	Beech	10	N 66 W	20
"	Maple	12	N 71 W	17	17, 18	do	16	S 53 E	34
E	Maple	12	S 6 1/2 W	33					
"	W Oak	40	S 75 W	35					
F	W Oak	24	S 49 W	18					
"	W Oak	20	N 22 W	24					
G	B Oak	12	N 15 W	7					
"	W Oak	9	S 21 W	30					
H	Chest	24	S 62 W	68					
"	B Oak	20	S 53 E	08					
I	do	20	N 41 W	18					
"	W Oak	20	S 35 W	24					
K	W Oak	44	S 52 W	17					
"	Hickory	14	N 60 E	11					
L	Maple	24	S 41 W	16					
"	W Oak	30	N 41 W	16					
M	Ironwood	10	N 24 W	5					
"	Hickory	12	N 57 E	21					
N	W Oak	20	S 15 E	10					
"	W Oak	12	N 15 W	20					
O	Sugar	12	S 57 W	21					
"	Sugar	20	N 29 W	28					
P	W Oak	30	S 30 W	17					
"	W Oak	20	N 74 E	45					
Q	B Oak	24	S 64 W	43					
"	B Oak	8	N 12 W	19					
R	do	12	S 30 E	23					
"	Hickory	10	N 53 E	32					
S	do	15	S 71 E	22					
"	Hickory	12	N 10 E	25					
T	W Oak	26	S 62 E	42					
"	Maple	18	S 4 W	24					
U	W Oak	24	S 80 1/2 E	48					
"	Hickory	12	S 54 W	27					
Section Corners									
19, 20	W Oak	36	N 41 W	5					
21, 22	Hickory	9	N 30 E	24					
18, 19	W Oak	32	S 57 W	5					
22, 23	Hickory	12	N 61 E	24					
11, 12	Sugar	12	S 88 W	16					
19, 20	Ironwood	11	N 12 E	18					
12, 13	W Oak	18	N 53 W	20					
18, 19	do	30	S 74 E	12					
9, 10	Maple	12	S 85 E	22					
11, 12	W Oak	40	S 57 W	10					
8, 9	do	40	N 55 E	19					
12, 13	Hickory	10	S 75 W	15					
1, 2	do	13	S 37 W	3					
9, 10	W Oak	30	N 54 E	10					
2, 3	Maple	14	N 13 E	12					
8, 9	W Oak	20	S 55 W	13					
W Oak Section Corners									
39, 40	Maple	16	S 11 W	7					
41, 42	Sugar	12	N 11 W	15					
37, 38	Hickory	20	N 16 E	5					
43, 44	W Oak	14	N 14 W	27					
21, 22	B Walnut	30	S 81 E	14					
39, 40	do	12	S 69 W	23					
23, 24	Maple	12	N 73 W	5					
37, 38	W Oak	24	S 50 E	38					