

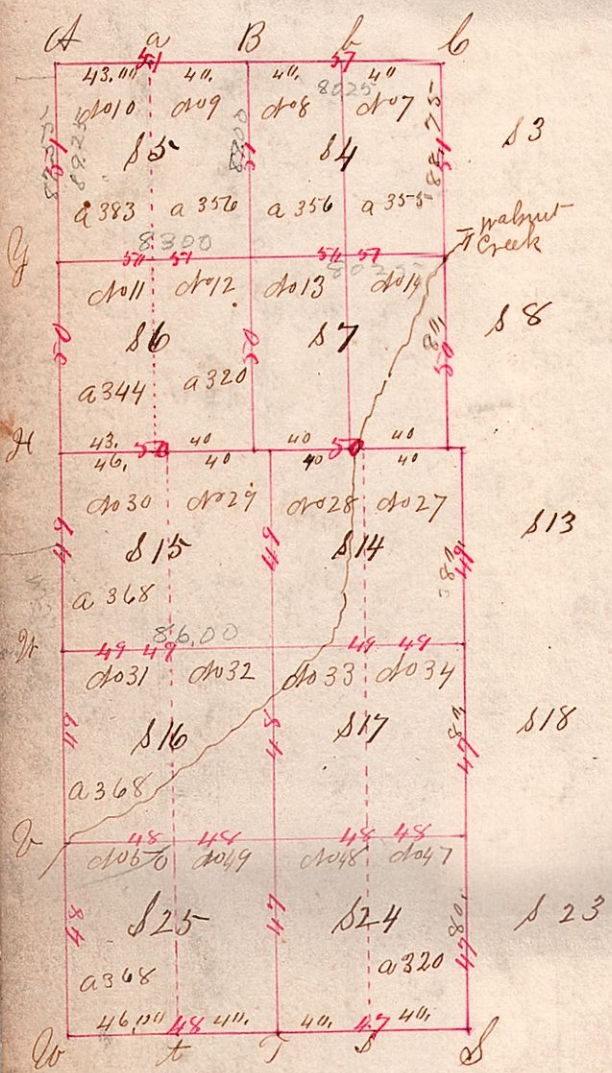
2

8914 8815  
44.38

89

44.38

### Township 9 Range 4 (Congress)



Scale 20 chains to inch

The red figures on lines refer to pages where additional notes may be found for the lines as numbered

### Exterior Section Corners

Post	Bearing	Tree	Diameter	Course	Links
A		Maple	24	N 57 W	31
"		W Oak	18	S 28 E	40
a		W Oak	36	S 75 E	9
"		do	30	N 57 W	49
B		Sum	12	N 85 E	47
"		W Oak	18	N 57 W	47
b		Maple	12	N 65 E	10
do		do	13	S 74 W	14
c		Hickory	12	S 69 W	6
"		do	6	N 1 E	17
"		do	15	N 67 W	11
d		Maple	8	S 82 E	20
"		Hickory	13	N 57 W	19
e		chestnut	36	East	26
"		B Oak	36	East	20
f		chestnut	36	East	26
"		Hickory	6	N 71 W	26
"		do	12	S 16 W	10
"		do	7	N 2 W	13
"		do	12	S 27 E	56
g		do	4	N 54 W	27
"		do	7	N 29 W	11
"		do	14	S 5 E	31
"		W Oak	15	S 15 W	4
"		Hickory	8	North	17
"		W Oak	15	S 85 E	12
"		do	15	N 89 W	30
"		do	30	S 65 E	7
"		Maple	12	N 47 W	27

### Interior Section Corners

3.4		do	16	S 70 E	10
7.8		Elm	13	N 60 W	44
4.5		W Oak	18	S 65 W	22
6.7		Maple	14	N 63 E	34
N 13.14		Hickory	18	S 17 E	10
"		B Oak	8	N 17 W	30
"		do	7	N 60 E	22
14.15		Ironwood	8	S 82 W	27
"		do	8	S 82 W	27
7.8		Sum	14	S 33 W	16
"		W Oak	24	N 2 W	33
6.7		Sugar	17	N 18 E	11
"		Hickory	12	S 34 E	55
13.14		W Oak	16	S 75 W	25
17.18		do	8	N 80 E	44
"		do	10	S 18 E	20
14.15		Sum	10	S 18 E	20
16.17		Hickory	7	N 72 W	17
17.18		Hickory	6	N 15 W	10
23.24		do	7	S 34 E	27
16.17		do	15	N 25 E	6
24.25		W Oak	8	S 42 W	17

### Interior half Section Corners

7.8		W Oak	10	S 13 W	20
13.14		do	14	N 43 E	30
9.10		Hickory	8	S 85 E	11
4.12		W Oak	7	S 64 W	35
11.12		Hickory	6	S 7 W	6
"		W Oak	6	N 27 E	26
13.14		Beech	24	N 58 W	26
"		do	16	N 44 E	53
27.28		Beech	12	North	3
"		Sugar	14	East	11
27.30		W Oak	15	N 80 E	29
"		do	15	S 43 W	30
27.28		W Oak	16	S 77 W	12
33.34		Hickory	14	N 83 E	18
29.30		Maple	15	S 83 E	13
"		do	12	N 42 W	18
36.32		do	12	S 45 E	31
33.34		Hickory	12	S 45 E	31
42.45		do	12	N 56 W	32
31.32		W Oak	16	N 56 W	13
42.50		do	15	S 27 E	24