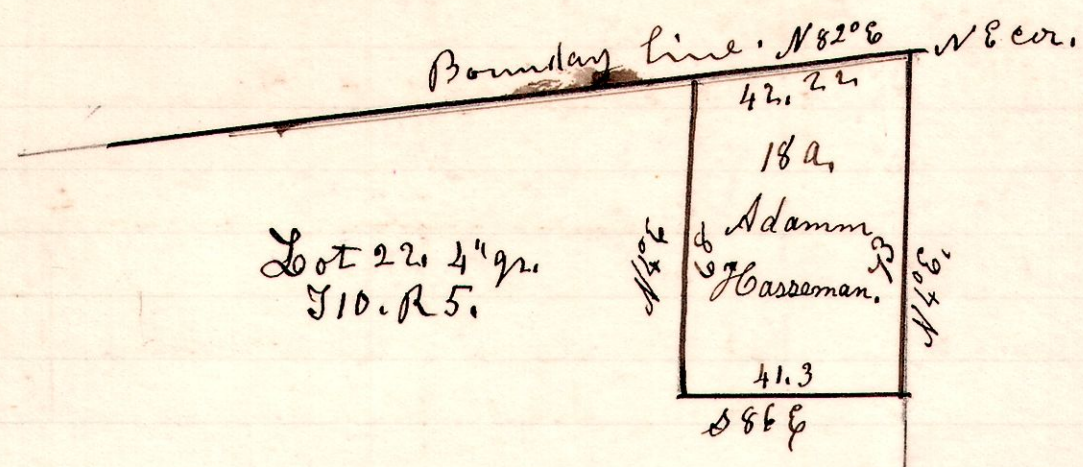


5 10 22.4" gr

No 597

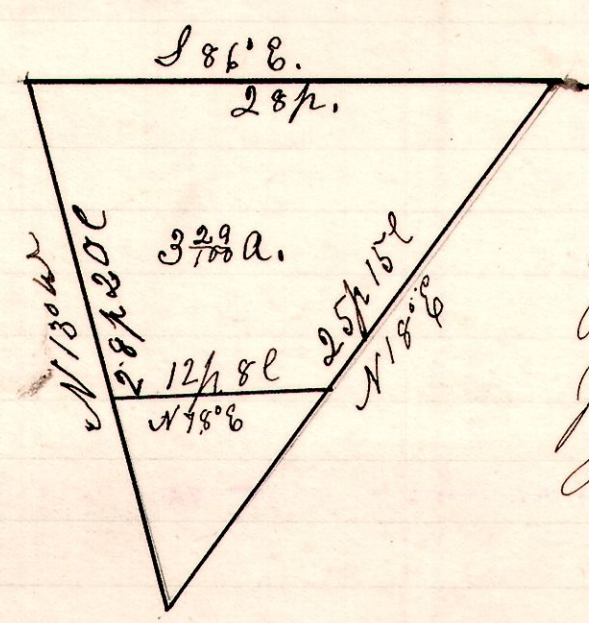


Lot 22, 4" gr.  
T10. R 5.

A Survey made for Adam Hasseman being the north east part of military lot 22 in 4" gr T10. R 5.  
March 3-1906.  
H. H. Robinson  
County Surveyor.

No 598

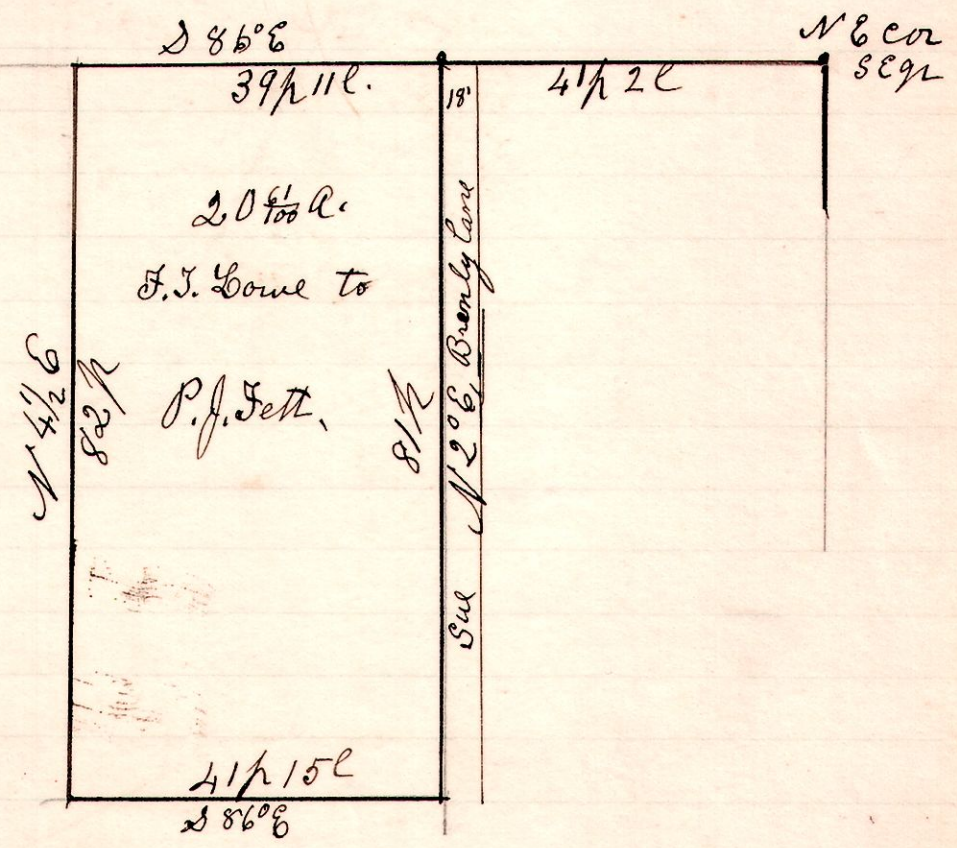
7 9 24 1" gr



A Survey made for Mr. Leekroner & John Lemmon, being part of lot 24, 1" gr T9, R 7, being the NW corner of a 32 a. piece recorded in Vol 67, P 500  
January 17<sup>th</sup> 1906.  
H. H. Robinson  
County Surveyor.

No 599

6 8 21



A Survey made for F. J. Lowe being part of the north part of the S. E. qtr of Sec 21, T 8, R 6.  
January 29<sup>th</sup> 1906  
H. H. Robinson  
County Surveyor.