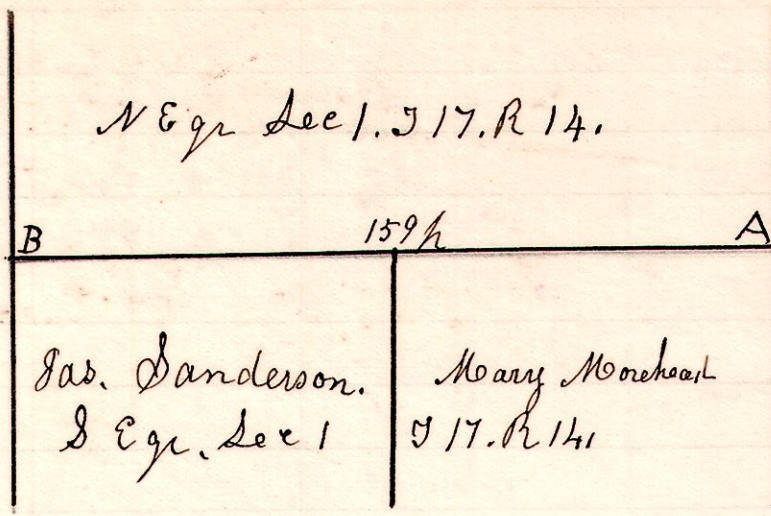


14 17 1

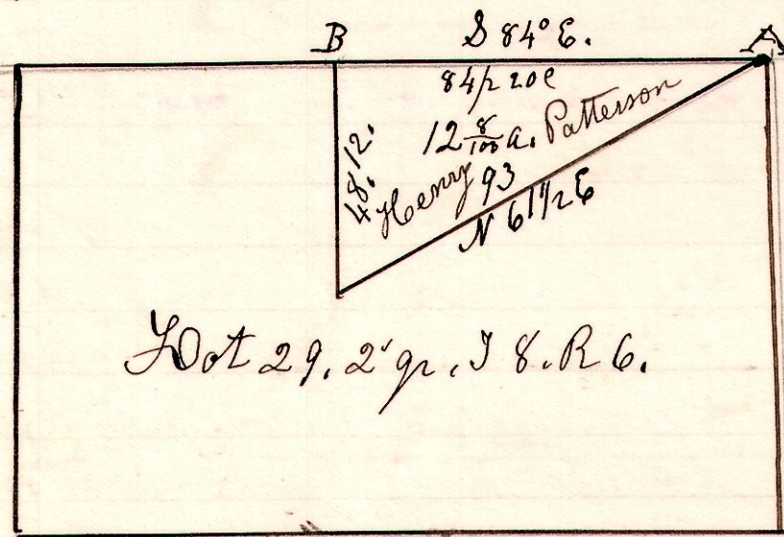
No 594



A Survey made for  
 Jas Sanderson and Scott  
 to establish the line A.B.  
 Found established corner  
 Stone at each corner.  
 and established the  
 line A.B.  
 April 12<sup>th</sup> 1906.  
 H. H. Robinson  
 County Surveyor

6 8 lot 29. 2<sup>nd</sup> qtr.

No 595

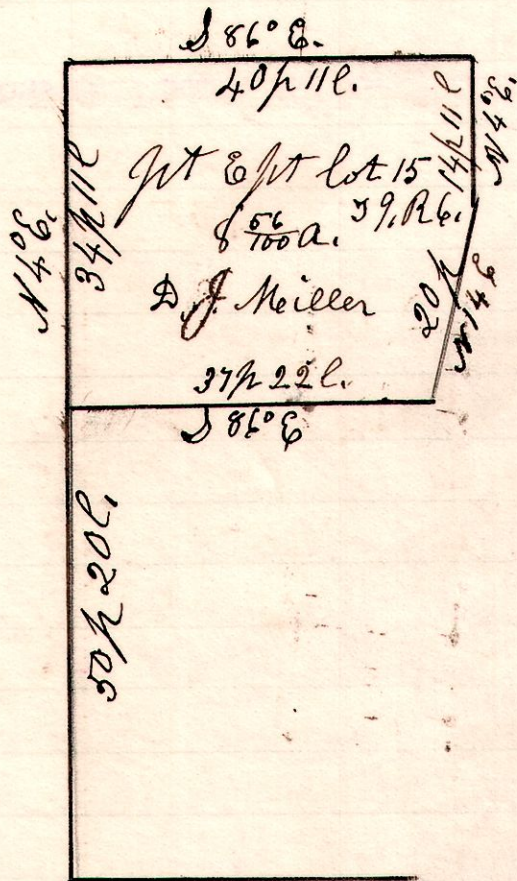


Surveyed the line  
 A.B. and located  
 the corner at A,  
 Look witness,  
 R. Oak. 36. S 37 1/2 W 19 l.  
 April 7<sup>th</sup> 1906.  
 H. H. Robinson  
 County Surveyor

George Maxwell &  
 Wm Patterson Chain Carvers.

6 9 lot 15. 4<sup>th</sup> qtr.

No 596



A Survey made for Noah  
 Coblenz as guardian of  
 his sister; as sold to D. J.  
 Miller.  
 Being part of the east part  
 of lot 15. 4<sup>th</sup> qtr. T 9. R 6.  
 March 7<sup>th</sup> 1906.  
 H. H. Robinson  
 County Surveyor.