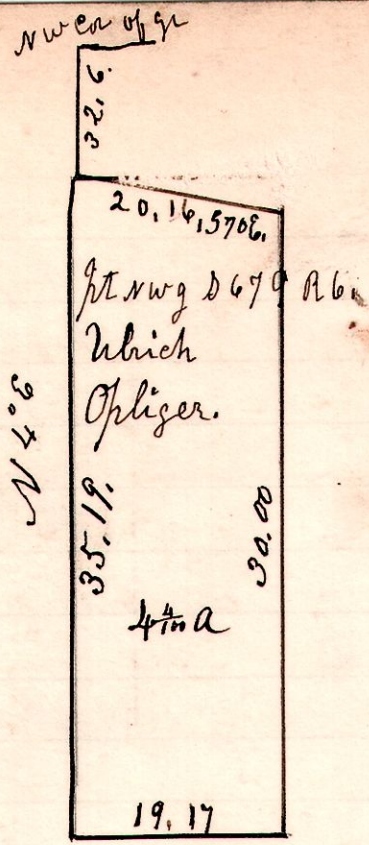


6 9 6

No 591



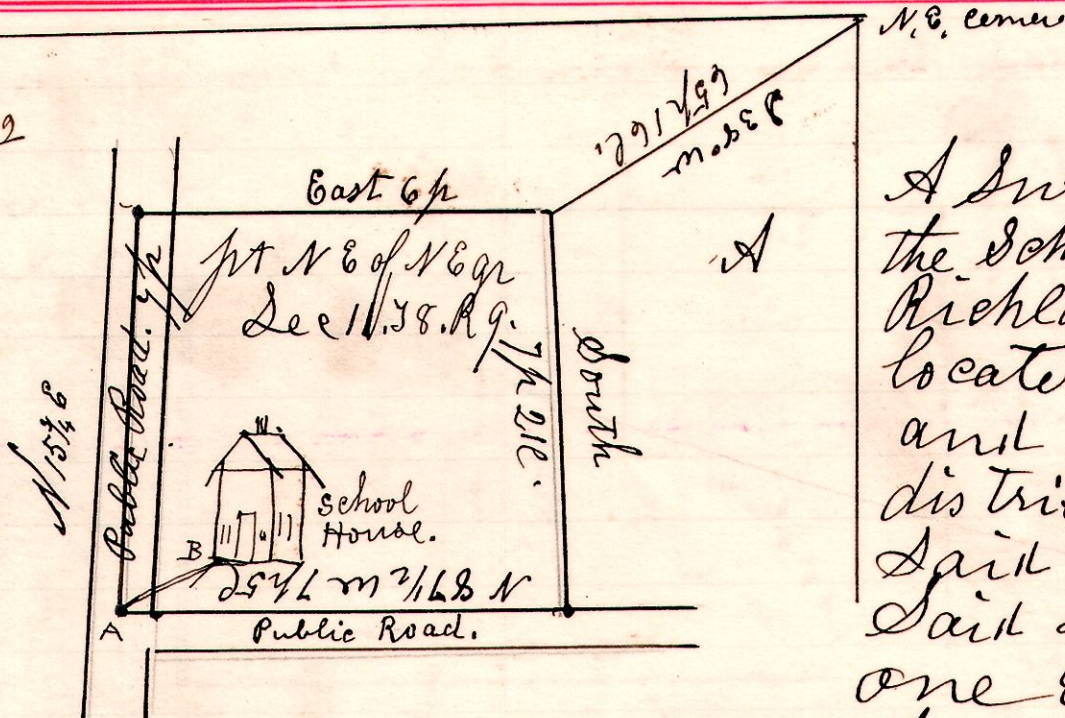
A Survey made for C. R. Smith & Opliger, being part of the west part of the north west quarter of Section 6. in Tp 9. of R. 6.
March 27th 1906.

H. H. Robinson
County Surveyor.

Chain Corners
Smith & Opliger.

9 8 11

No 592



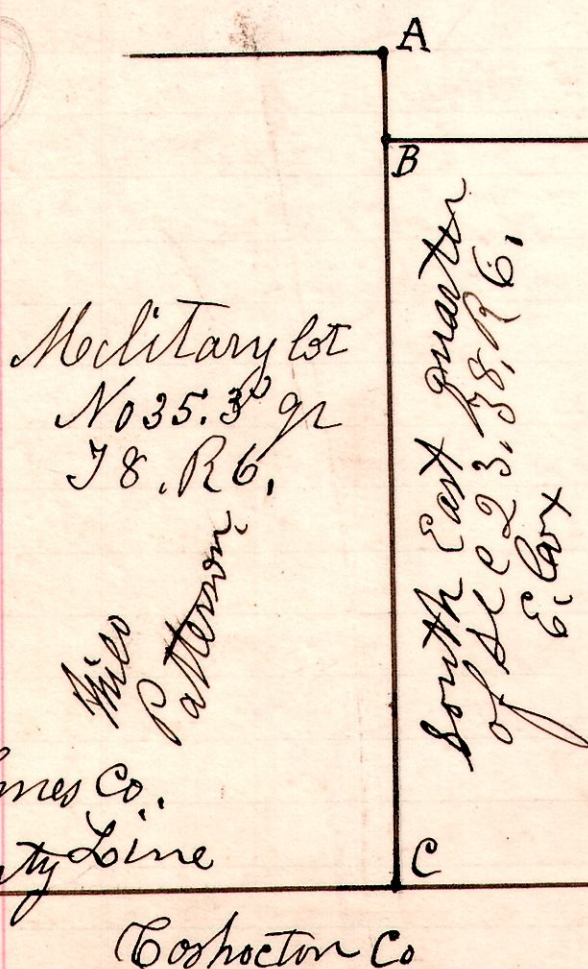
A Survey made for the School Board of Richland Tp. to locate the corners and lines of School district No. 1 in said Richland Tp. Said District is the one established by the County Commissioners.
March 4th 1906.

H. H. Robinson
County Surveyor.

B. is S 56 W, 44 feet from the S W corner of the School House.

No 593.

6 8 23 11 33.



A Survey made for E. Cox and Mello Patterson, being the line between the South East quarter of Section 23, and military lot 35. 3 1/2 q. T. 8. R. 6. The quarter Township line divides the two pieces. At A the stone come with old witness stumps standing. At C on county line a stone corner, with one of the witness stumps standing. Ran line A. C. and established corner B. planted stone and took witness B. Walnut. 12-11-66. 9 1/2 c.

Military lot
No 35. 3 1/2 q.
T. 8. R. 6.
Mello
Patterson
Holmes Co.
County Line
Coshocton Co