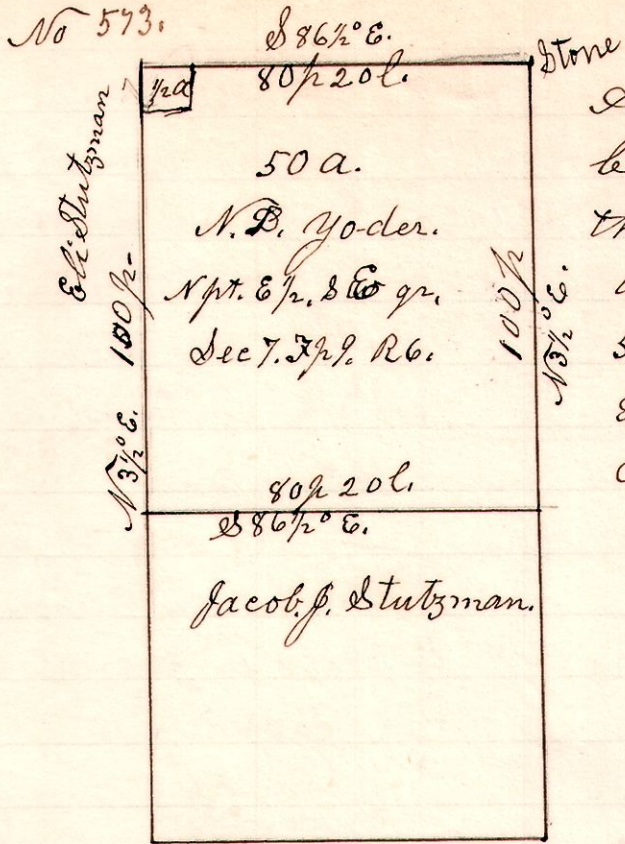
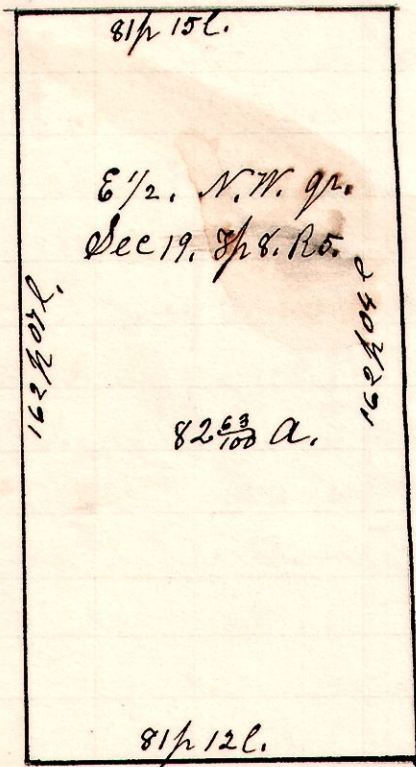


697



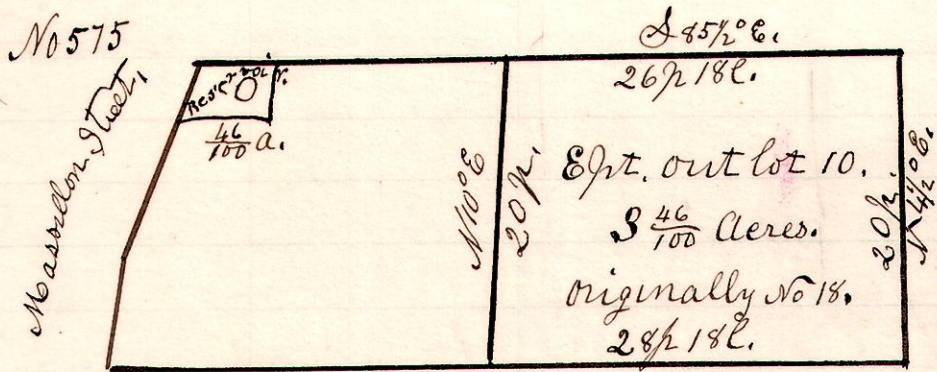
A Survey made for Jacob J. Stutzman, being the north part of the east half of the South East quarter of Section 7, in Township 9 of Range 6, containing 50 1/2 acres and sold to N.D. Yoder, excepting 1/2 acre in the north west corner heretofore sold to Eli Stutzman.
December 9th 1904.
H. H. Robinson
County Surveyor

- 5 8 19 E 1/2 NW. No 574.



A Survey made for Saml. B. Fair, being the east half of the north west quarter of Section 19, in Township 8, of Range 6.
December 22nd 1904.
H. H. Robinson
County Surveyor.

Miller's Out Lot.



A Survey made for S. R. Snyder, being the east part of Out lot No 18 originally, and now No 10, the part surveyed being excepted by Mrs John Allpeter who sold the west part to S. R. Snyder
January 23rd 1904.
H. H. Robinson
County Surveyor.