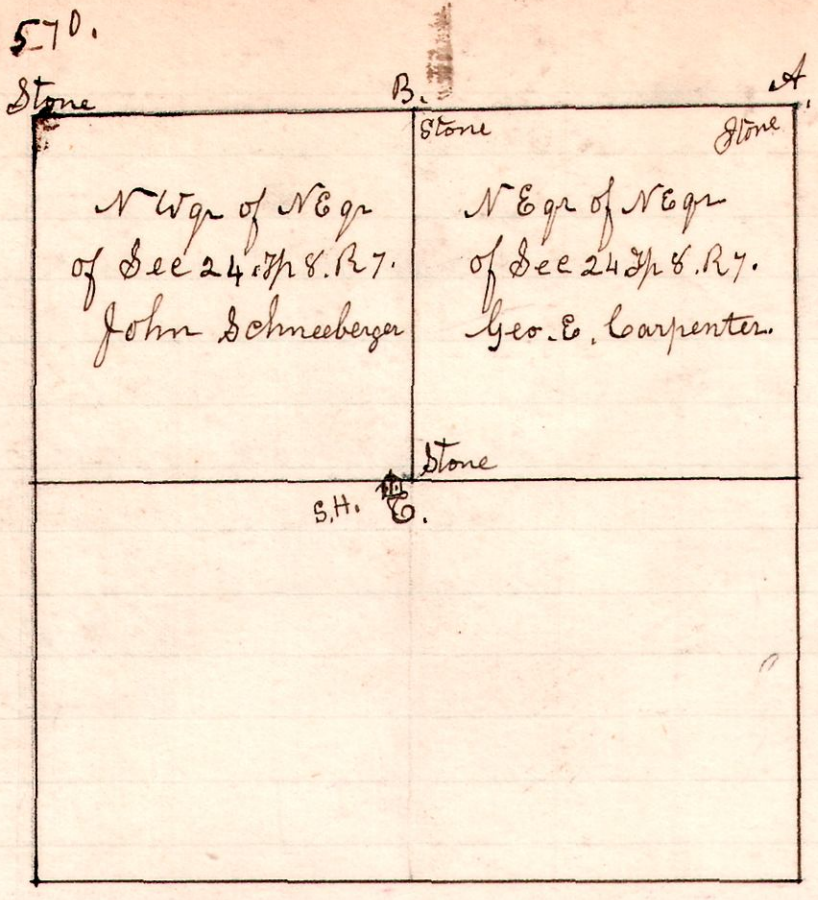
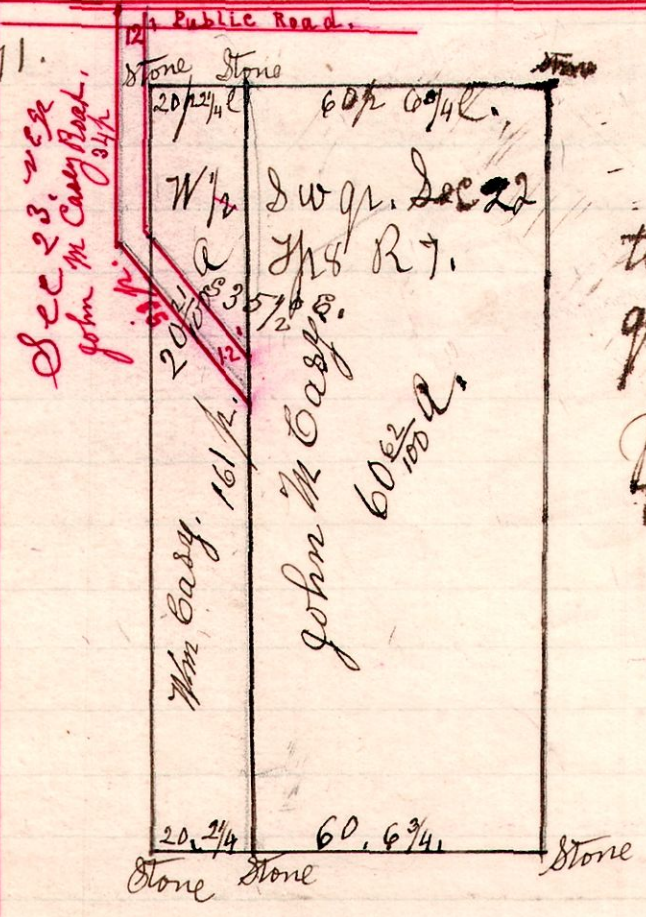


No 570.  
7 8 24 N of NW



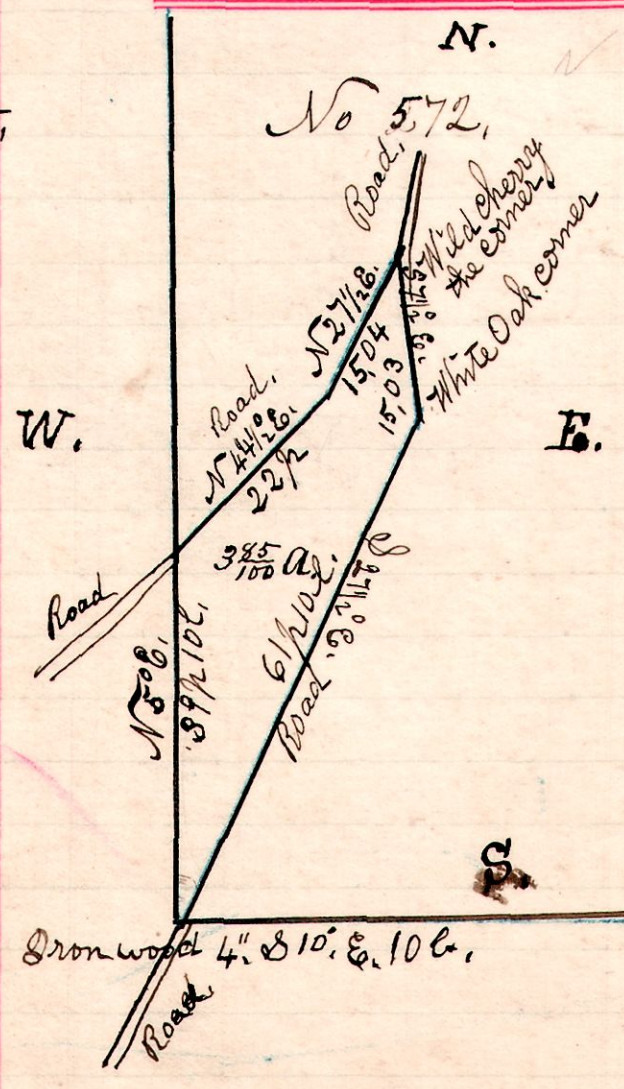
A legal survey made for Geo. E. Carpenter and John Schneeberger, to establish corner at B., and to locate the lines A, B & C. Planted stone at corner B. and took witness, Beech 16" N 85° East, 6 links.  
Notice served by Geo. E. Carpenter on John Schneeberger that the survey would be made on November 15<sup>th</sup> 1904, between the hours of 9 Am and 6 Pm. November 15<sup>th</sup> 1904.  
H. H. Robinson  
County Surveyor.

7 8 22 No 571.



A survey made for Charles Casey to divide the west half of the South west quarter of Section 22 in Township 8 of Range 7, also to survey a private which Charles Casey sold to John M Casey.  
November 17<sup>th</sup> 1904  
H. H. Robinson  
County Surveyor.

9 8 1. E/2 SW,



A survey made for J. W. McLaughlin and Ed Mitchhart, being the South west part of the East half of the South west quarter of Section 1, in Township 8, of Range 9.  
December 1<sup>st</sup> 1904.  
H. H. Robinson  
County Surveyor.