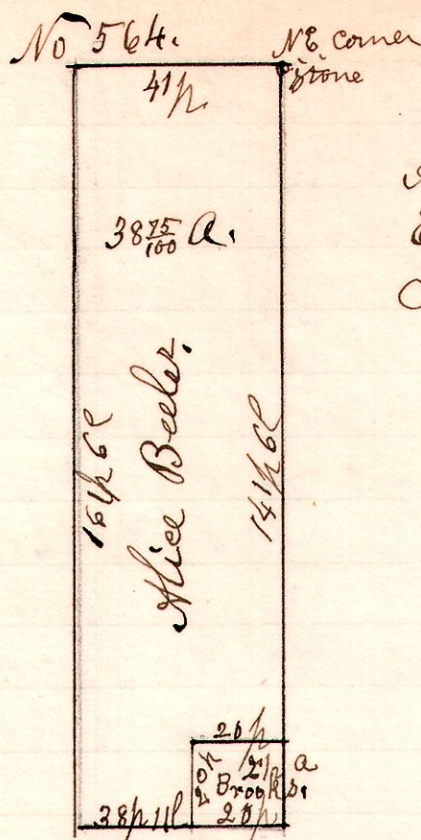


7 9 lot 20.

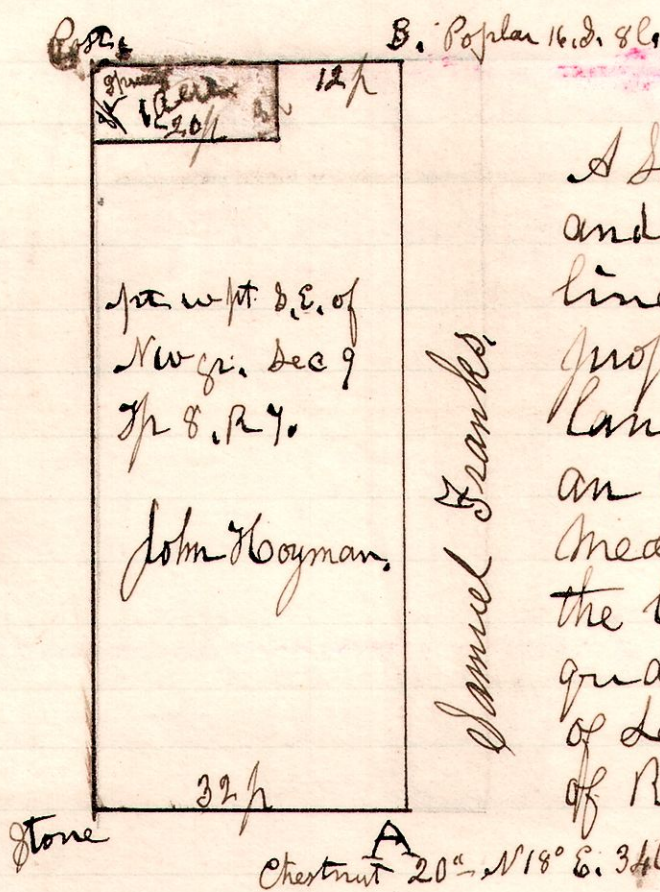


A survey made for Alice Beeler, being the East part of lot No 20, in the 3<sup>d</sup> quarter of Township 9. of Range 7.

September 21<sup>st</sup> 1904,  
H. H. Robinson  
County Surveyor

7 8 9 20 of NW

No. 565

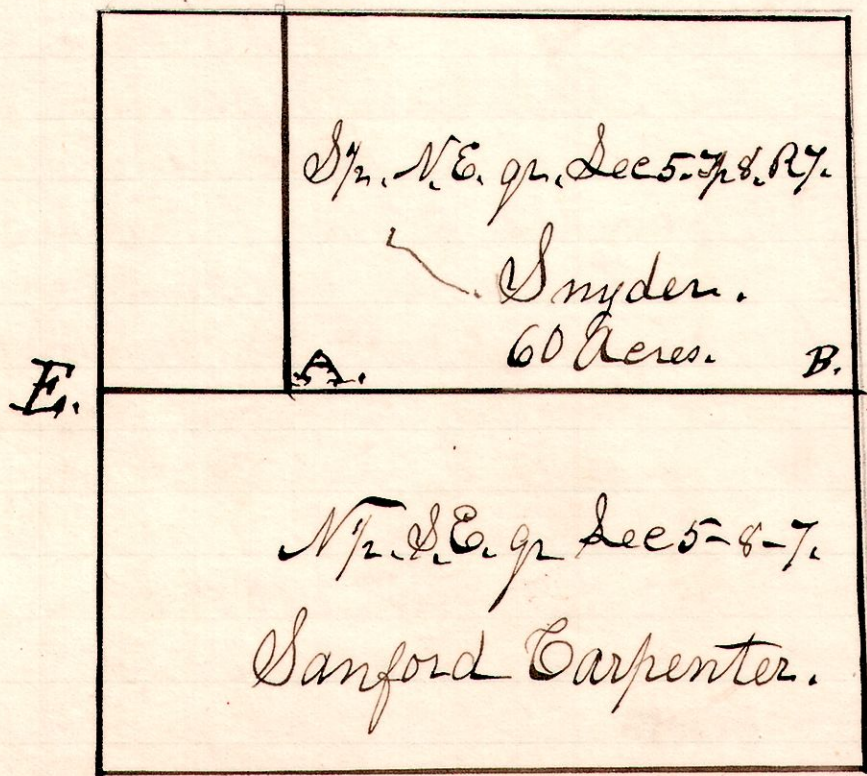


A survey made for John Hoyman and Samuel Franks, being the line A. B. which line is the property line between their lands, the Hoyman land being an exception in Deeds, I measured it off, which left the balance of the south east quarter of the north west quarter of section 9, in Township 8. of Range 7, belonging to Samuel Franks.

September 27<sup>th</sup> 1904  
H. H. Robinson  
County Surveyor

7 6 5

No. 566



A Survey made for Snyder, being the line A. B. Established corner A and took witness, Stone, and ran and staked the line A. B.

Oct. 24<sup>th</sup> 1904.  
H. H. Robinson  
County Surveyor