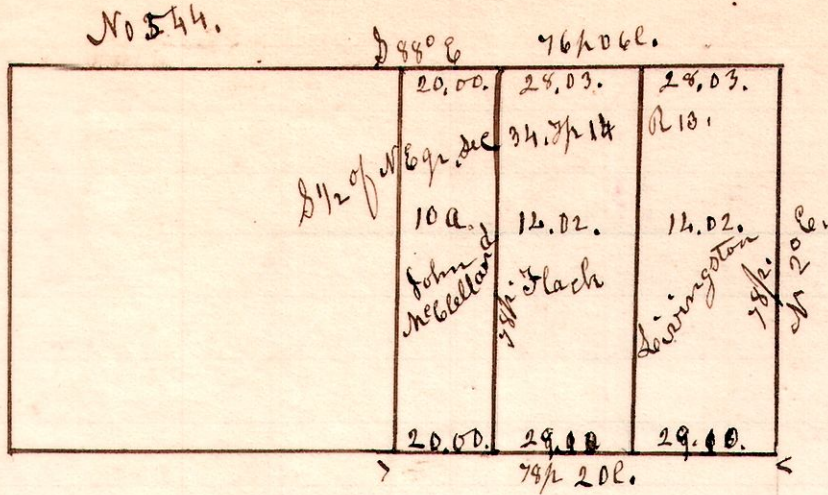
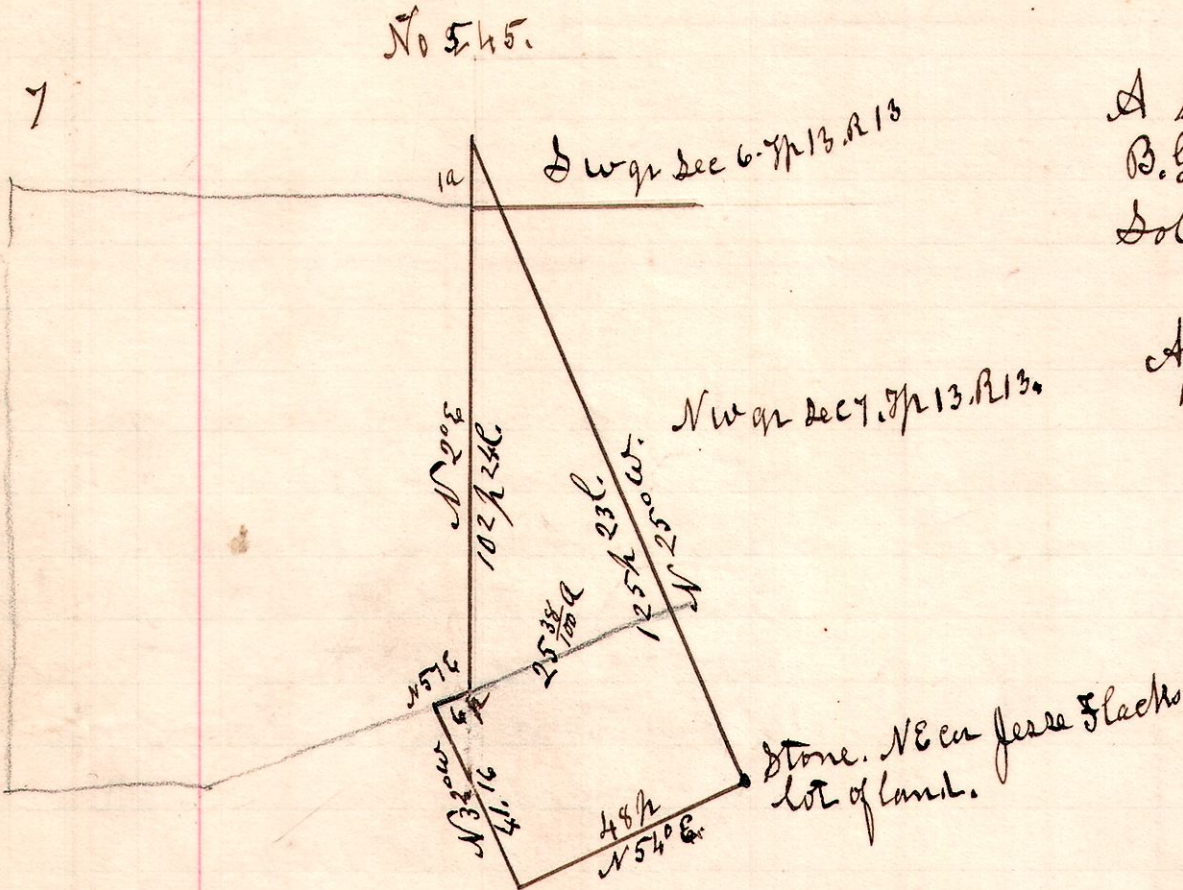


13 14 34.



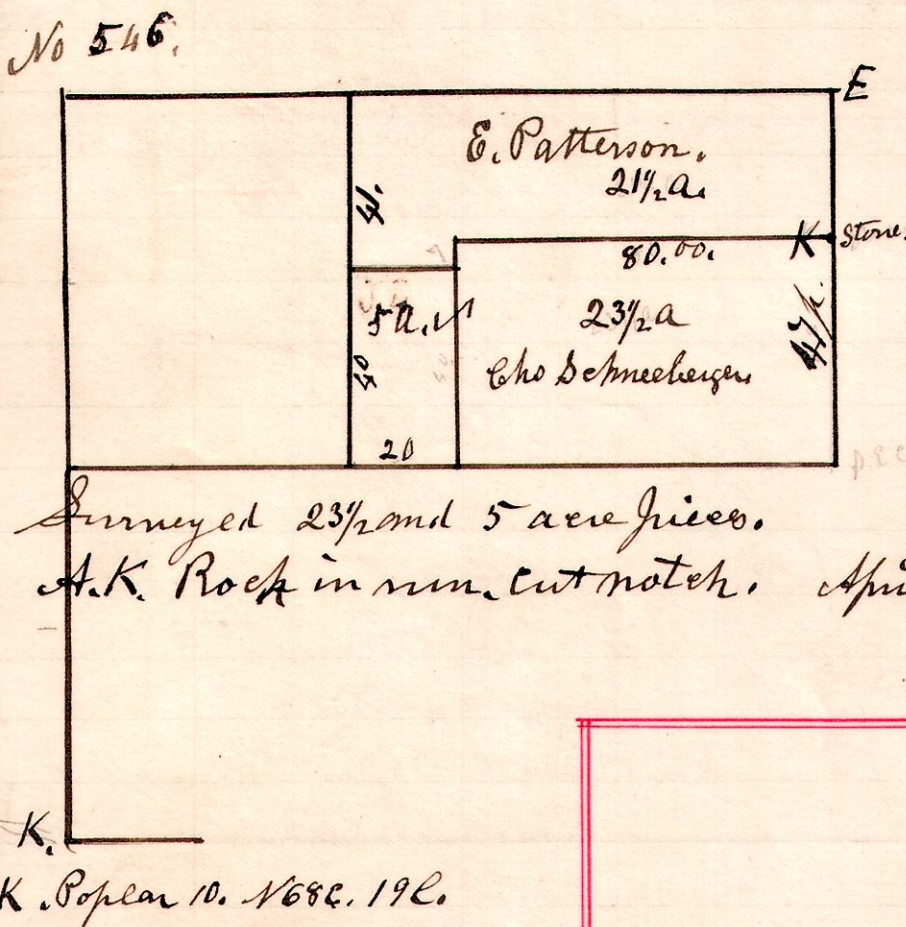
A survey made for John McCallan and others, being the south half of the north east quarter of section 34, in Township 14 of Range 13. April 13<sup>th</sup> 1904.  
H. H. Robinson  
County Surveyor.

13 13 7



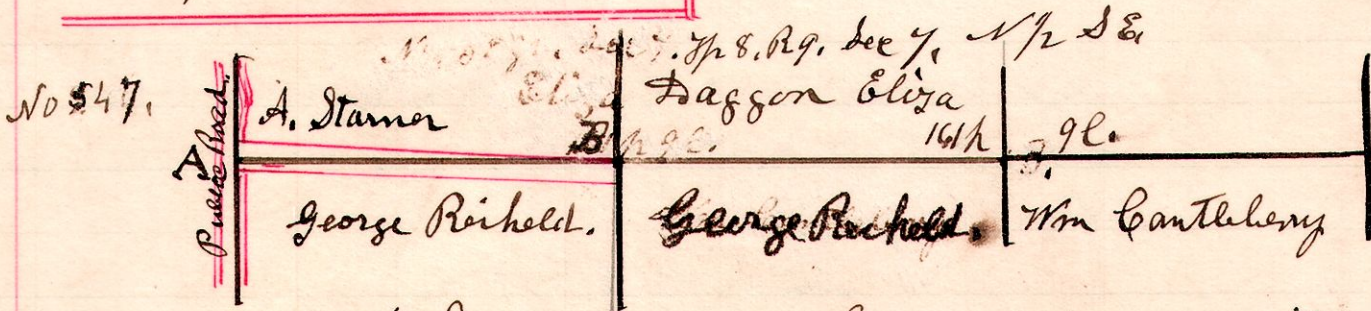
A survey made of part of B. Gorrell estate of 25 3/4 acres sold to Wm M Martin  
April 15<sup>th</sup> 1904.  
H. H. Robinson  
County Surveyor.

7 8 17



A survey made for E. Patterson and Chs Schmeberger, being part of the north half of the south east quarter of section 17, in Township 8, of Range 7.  
April 19<sup>th</sup> 1904 H. H. Robinson  
County Surveyor.

8 9 7



A survey made for Eliza Daggon with reference to a Road leading from A to B, being an outlet from Eliza Daggons land to the public road. At A the road is on the stamer land, and at B it is on the Daggon land. April 18<sup>th</sup> 1904.  
H. H. Robinson  
County Surveyor.