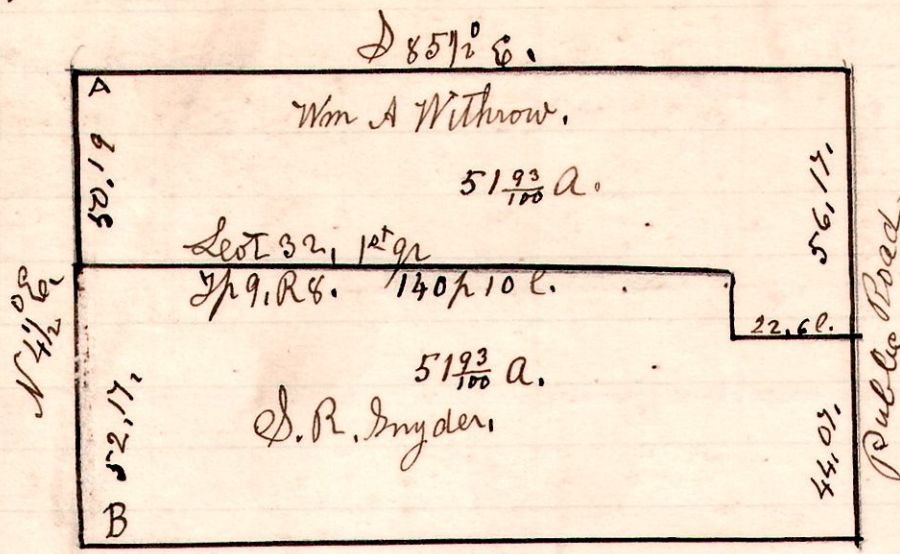


8 9 32 1<sup>st</sup> q<sup>r</sup>

162.16  
40.50

No 541

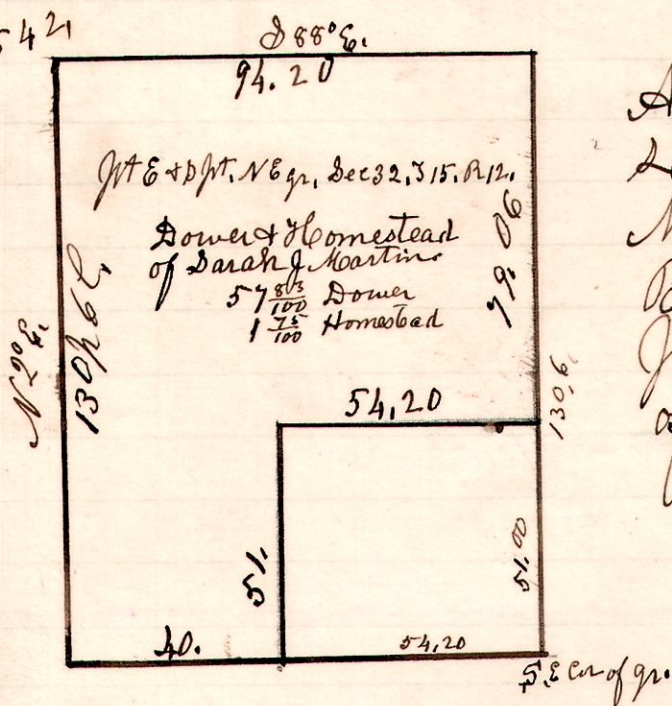


A Survey made for Wm A Withrow and S. R. Snyder, being a division of lot 32, in the first quarter of Township 9 of Range 8, March 29<sup>th</sup> 1904.  
H. H. Robinson  
County Surveyor.

A. B. Oak. 18 - S 14° E. 43.  
B. Original witness tree, N.O. 36. N 75° E 66.

12 15 32 1<sup>st</sup> q<sup>r</sup>

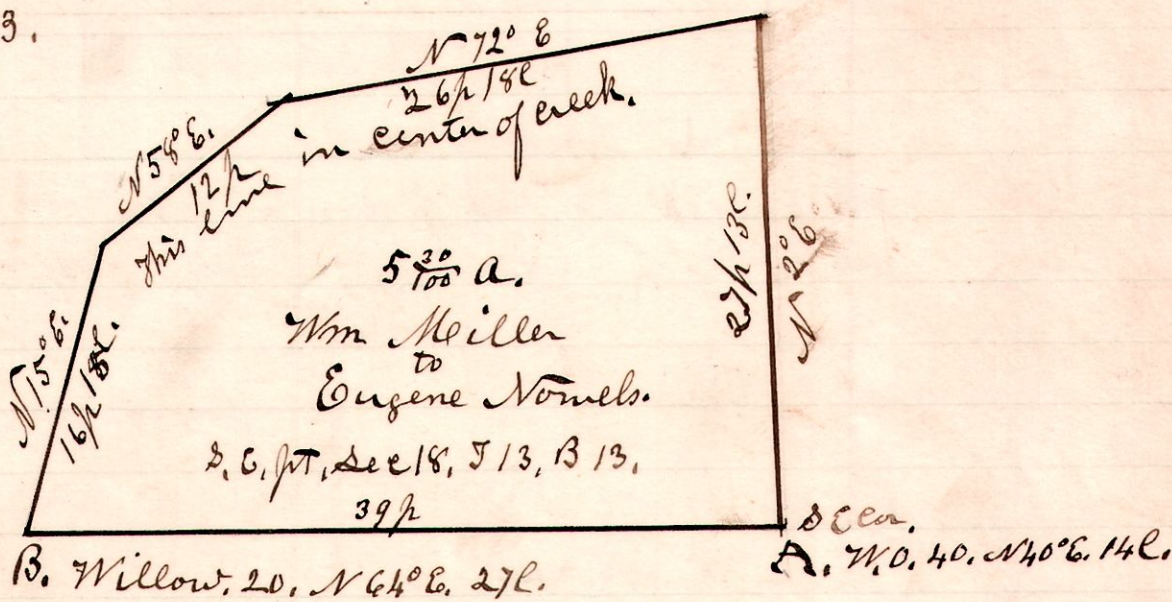
No 542



A Survey made by order of court to set off Dower and Homestead to Sarah J. Martin, widow of Joseph Martin, being part of the east and south part of the north east quarter of Section 32, in Township 15, of Range 12, March 30<sup>th</sup> 1904  
H. H. Robinson  
County Surveyor.

13 13 18.

No 543



A Survey made for Wm Miller, being the South east part of Section 18, in Township 13, of Range 13. March 31<sup>st</sup> 1904.

H. H. Robinson  
County Surveyor.