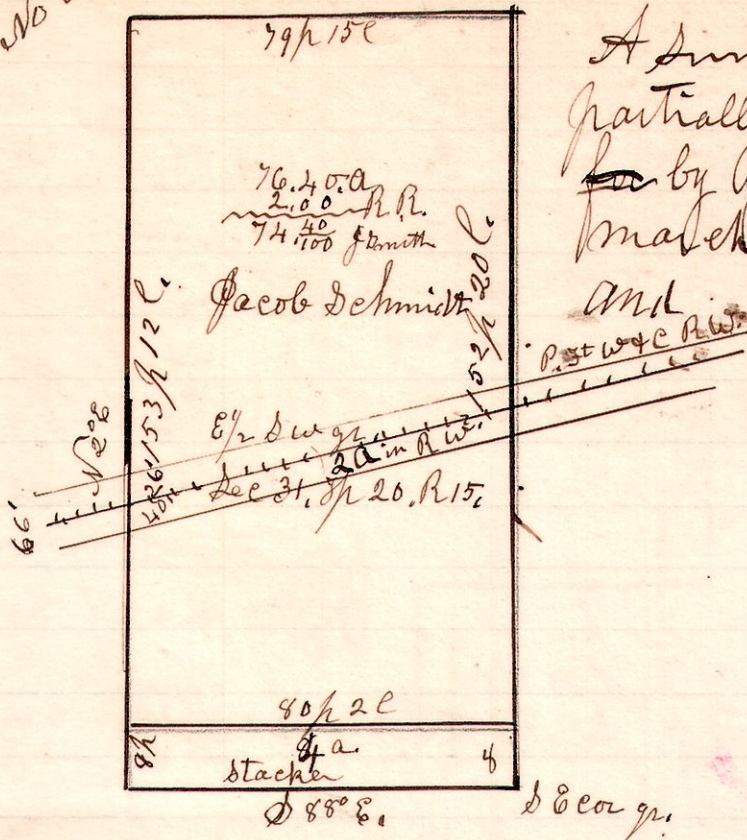


15 20 31

No 531

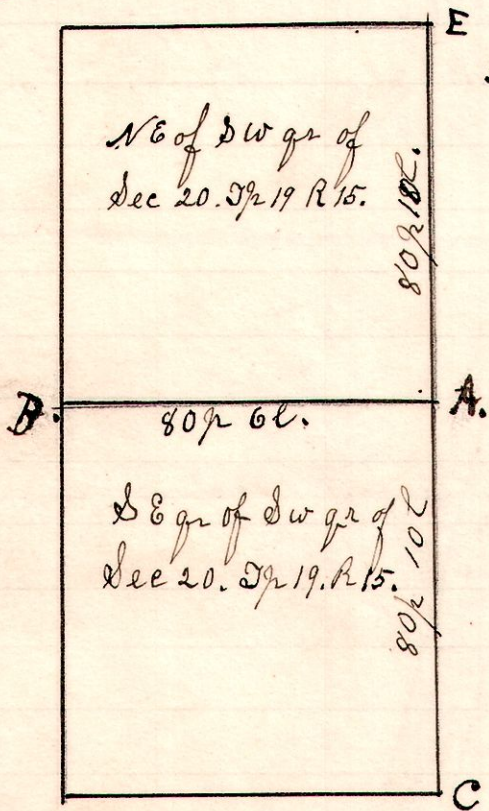


A survey made for Jacob Schmidt, partially from a former survey made for by G. B. Calhoun county surveyor on March 21<sup>st</sup> 1885, and myself Aug 1<sup>st</sup> 1898, and Sept 29<sup>th</sup> 1903.

H. H. Robinson  
County Surveyor.

15 19 20

No 532



A survey made for M. Frankiser and Jacob Spreng, being the lines A B & B C E.

The survey was made particularly to establish the line A B, and the corners A B. There being very few established corners in that part of the county, it was very difficult to get satisfactory corners, the two owners of the agreed on the corners at A & B, which I established and took witness trees, and ran the line and marked it throughout.

Persons present,  
Jacob Spreng & M. Frankiser  
owners, and Fred Heyd,  
George Heyd, Dan Mossier.

Witness at A. Willow 18" S 65° W - 26c.  
" B. Red Oak 7" N 86° E - 17c.  
Corner at C. Bank of River, East  
Side of R.R. track.  
Mch 9<sup>th</sup> 1904. H. H. Robinson Co Surveyor.

14 17 12 96.

No 533

19.06	J.W.
5 7/10 a	Moreland
19.03	5 7/10 a
18.23	5 7/10 a
18.20	5 7/10 a
18.20	5 7/10 a

A survey made for the heirs of Thomas Moreland being part of the South East quarter of Section 12, in T 17 of Range 14.  
Oct 13<sup>th</sup> 1903.

H. H. Robinson  
County Surveyor.