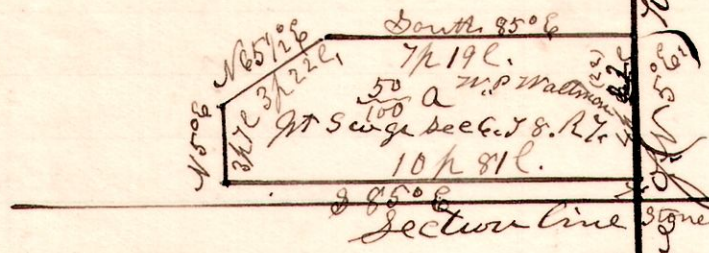


7 8 6 sw

No 525

SEqr.  
Sec 6. T8. R7



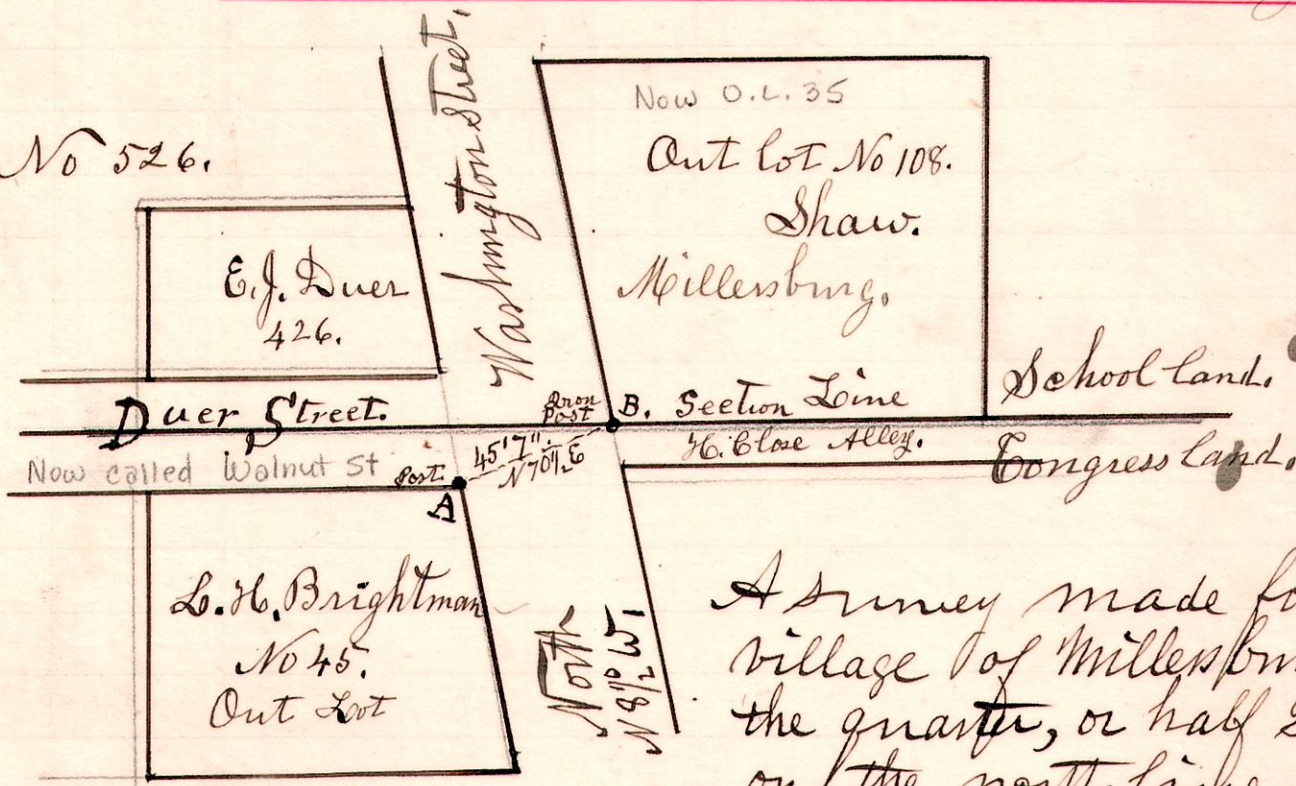
Neqr.  
Sec 15. T8. R7

Plat of a survey made for ~~Mr~~ P Waltman, being part of the south west quarter of section 6, in Township 8, of Range 7, and adjoining the Hillbuck "Oak Hill" Cemetery on the west. The south east corner of the lot is 7 feet north of the section line; there being a fence 7 feet north of the true line of section 6 on south side.

September 7<sup>th</sup> 1903.  
H. H. Robinson  
County Surveyor.

Millesburg

No 526.



A survey made for the village of Millesburg to locate the quarter, or half Section corner on the north line of section 12, in Township 9, of Range 7. Said corner being the south west corner of out lot No 108, owned by Shaw. The corner established by me 3 times previous, and marked, was destroyed, and the stump of the witness tree, Beech 18-20" dia 43 links was clear gone. I established the original corner from private notes taken before the stump of the witness tree was decayed and gone. The corner is now marked by an iron post driven deep in the ground. "A" is the corner post of Out lot N 45 at north east corner; "B" is the quarter Section Established.

September 8<sup>th</sup> 1903.

H. H. Robinson  
County Surveyor.