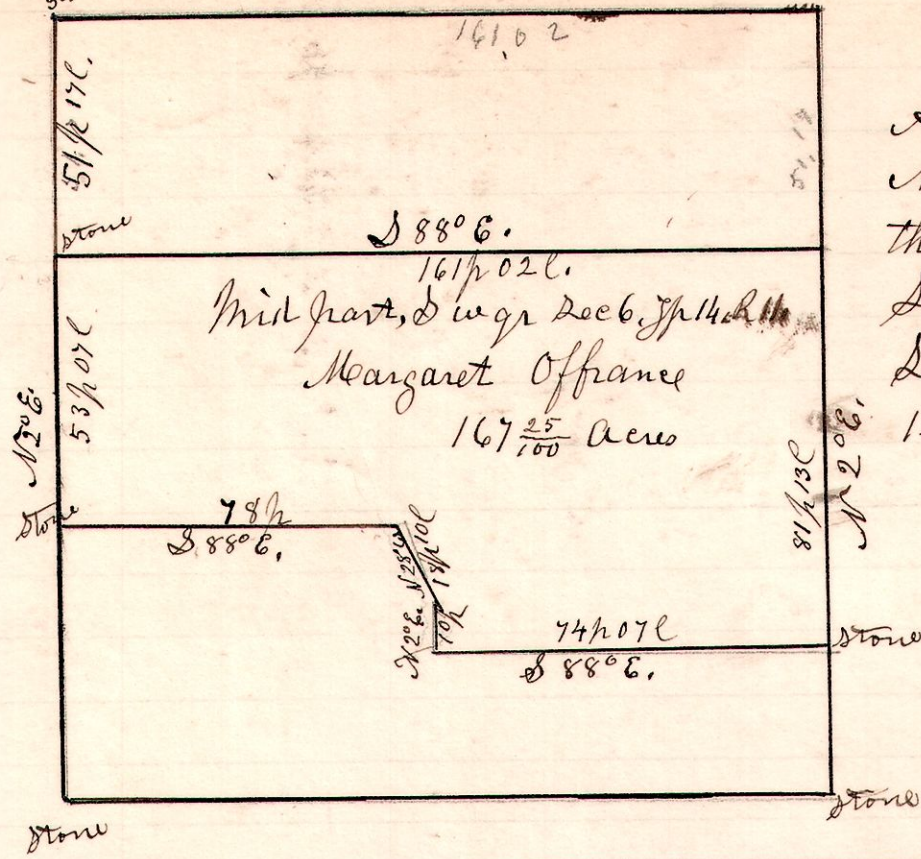


11 14 6 Sur

No 516,
stone

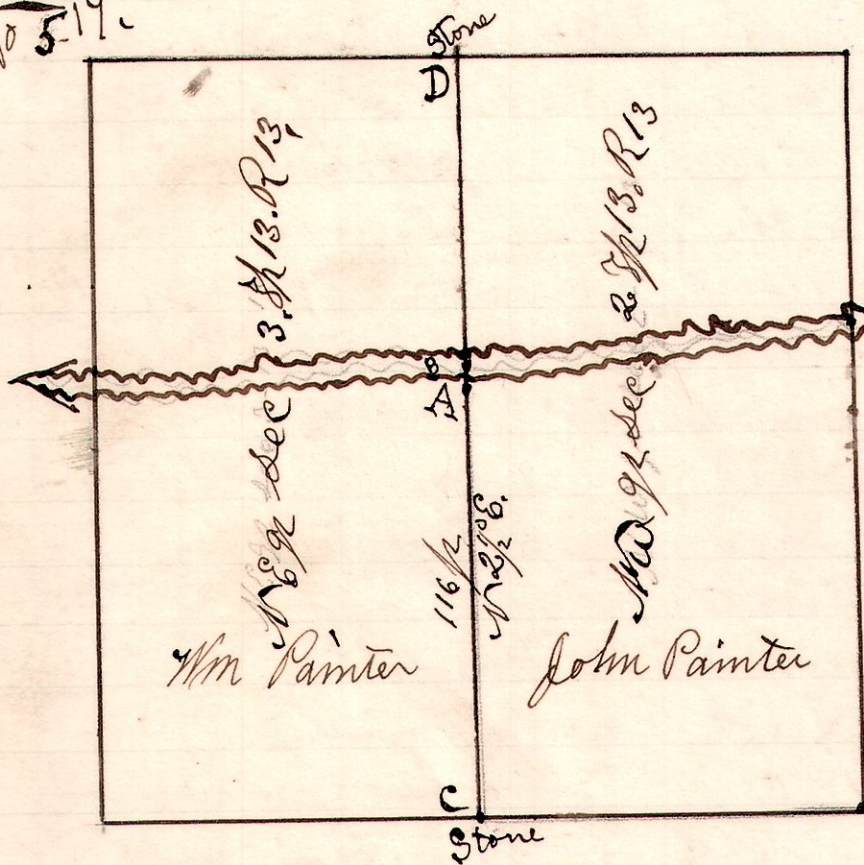


A survey made for
Margaret Offrance, being
the middle part of the
south west quarter of
Section 6, in Township
14, of Range 11.

August 10th 1903
H. H. Robinson
County Surveyor

13 13 3

No 517.



A survey made for Wm
Painter to locate corners
and line between the
north east quarter of
Section 3, and the north
west quarter of Section
2, in Township 13
of Range 13. from the
corner C in the center
of the public road, to
the corner B, in the center
of Salt creek, the land on
the west of said line
BC owned by W. A.

Painter, and on the east by John Painter.
B is the corner, north, in the center of Salt creek,
A is a post on the south side or bank of Salt creek
with witness, Willow 12" East, 3/4 links, said post
being on the dividing line of said sections.
D is a stone corner planted years ago by Samuel
Robinson, Surveyor.

Flag carrier,
Harris, H. Palmer.

August 26th 1903,
H. H. Robinson
County Surveyor

Settled to here