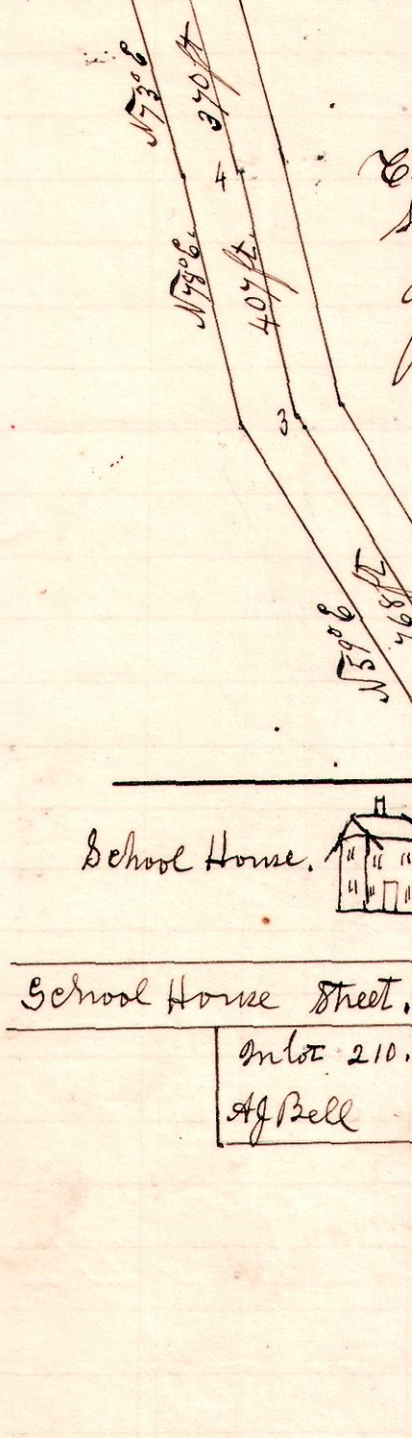


Millersburg

No 513.
Corporation Line.



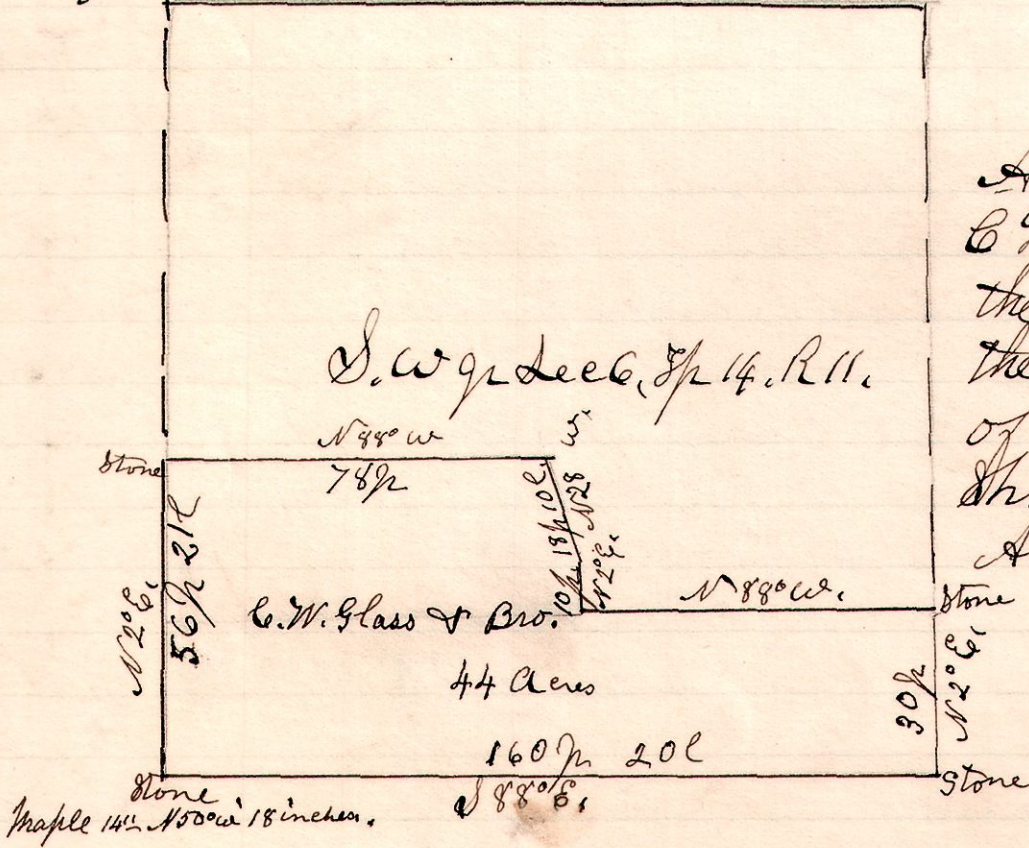
A survey made for the village of Millersburg to locate and mark East Jackson Street, from the west side of School House Street easterly to the east line of the corporate limits. Commencing in the center of Jackson Street, south of the south east corner of Inlot No 210, (A.J. Bell owner) Thence South 85° East 321 feet; Thence North 59° East 768 feet; Thence North 78° East 407 feet; Thence North 73° East 370 feet to the corporation line.

The street is 50 feet in width, and has a 7 foot side walk off each side, leaving 36 feet for wheel travel.

July 29th 1903.
H. H. Robinson
County Surveyor

11 14 6 SW

No 514.



A survey made for C. W. Glass & Bro. Being the south part of the south west quarter of section 6, in Township 14 of Range 11. August 10th 1903.

H. H. Robinson
County Surveyor