

Alteration of
County Road.

No 510

N. Teeling Petitioner.

Witness Trees.

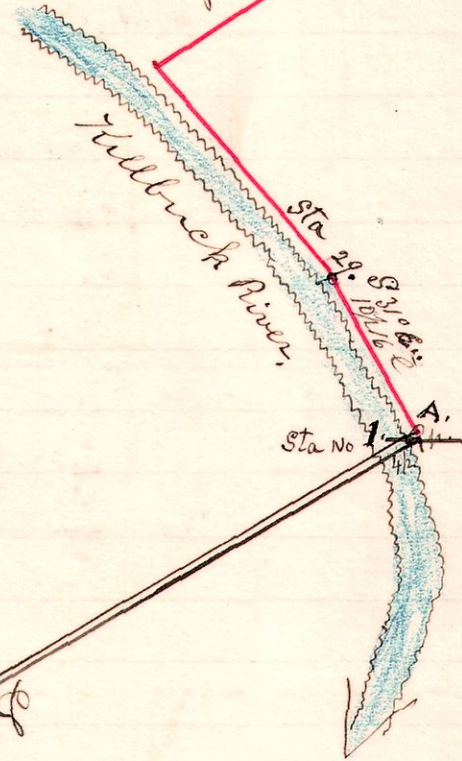
- A. Hickory, 14" S 74° E - 3/4 11 l.
- B. W. Walnut - 8" - N 70° W - 1/4 19 l.
- C. Beech - 20" - S 82° W - 1/4 19 l.

W. Young.

58 p.
N 2 1/2 W S 4

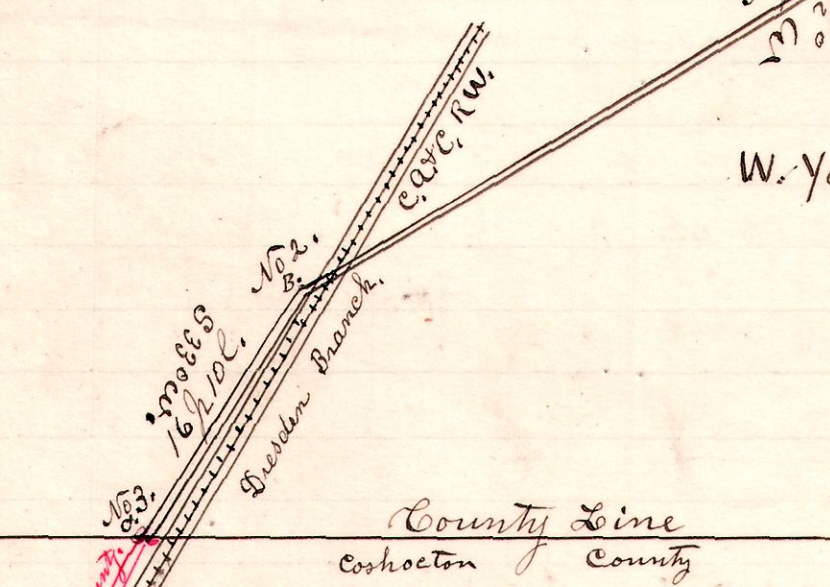
W. Young.

Road No 294.



Field Notes.

- No 1 - S 59 1/2° W - 58 p.
 - " 2 - S 33° W - 16 p 10 l
- Total length, 74 p 10 l



The above shows the line of alteration of County Road No. 294, as plotted in road record in County Auditors Office. The alteration commences at "A" which is 10 perches and 16 links, South 31° East from Station number 29 of the road sought to be altered; Thence 1 perch to bank of Hillbuck Creek; Thence 4 perches across creek; Thence continue to Station No 2, Distance from A. (No. 1) to B. (No. 2) 58 perches, which is on the west side of the Dresden Branch of the C.A. & C.R.W.; Thence continue along the west side of said R.W., to the line between Holmes and Coshocton Counties, where said alteration connects with a County Road in Coshocton County leading to Layland Station, on said Railway.

July 13th 1903.

H. H. Robinson Co
Survey of said road

Viewers.
G. W. Clow,
R. J. Chapman,
J. J. Korn.

Chain carriers.
G. W. Clow
R. J. Chapman,
Karpner,
J. J. Korn.