

13 13 4 SE
9

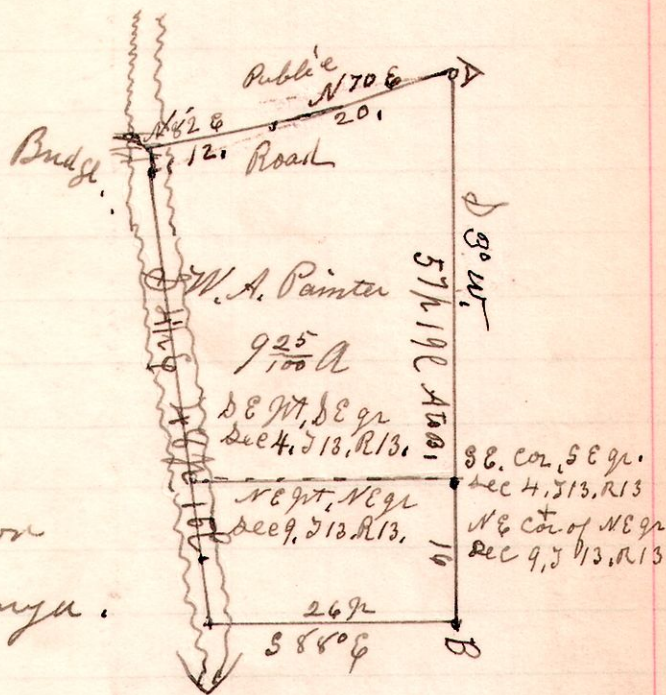
No 466.

A Survey made for W.A. Painter
Being the South East part of the
South East quarter of Sec 4. in
Township 13 of Range 13. and the
north East part of the north East
quarter of section 9. Township
13. of Range 13.

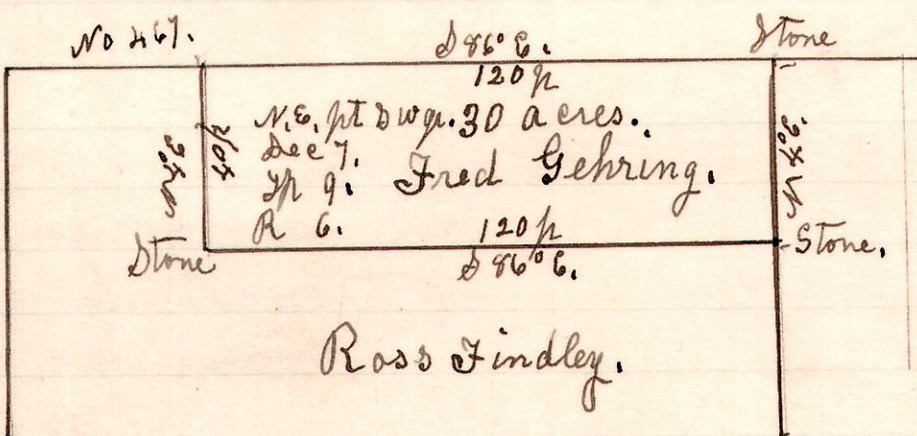
January 27th 1903.

Chain Carriers,
John McDelland
John Meiller.

H. H. Robinson
County Surveyor.



6 9 7 SW



A Survey made for Ross
Findley and Fred Gehring,
to locate the corners of the
line A, B, and establish
the line between those
corners.

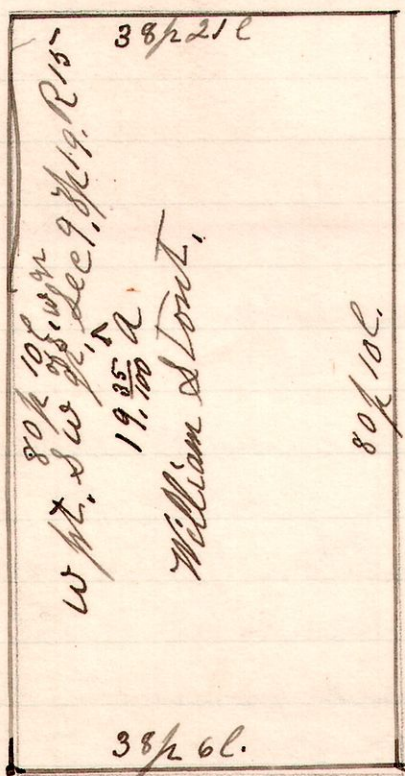
February 2nd 1903.

H. H. Robinson
County Surveyor.

Chain carriers,
Eli Stutzman.

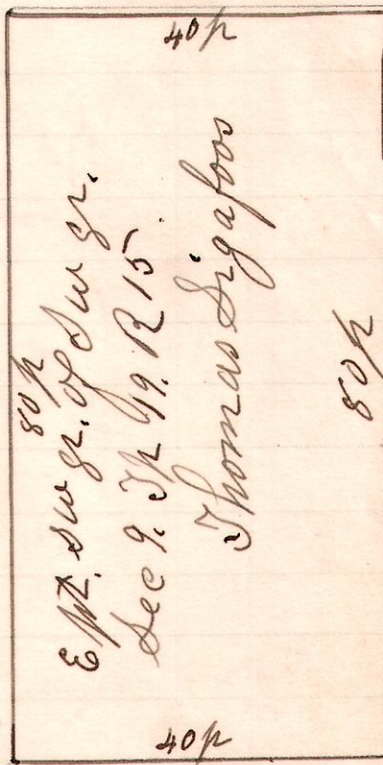
15 19 9

No 468



A Survey made for William
Stout, being the West part of
the South West quarter of
the South West quarter of
section 9, in Township 19 of
Range 15. Feb 26th 1903
H. H. Robinson
County Surveyor.

No 469



A Survey made for Thomas Sigafos,
being the East part of the South West quarter
of the South West quarter of section 9,
in Township 19 of Range 15. Feb 26th 1903.
H. H. Robinson
County Surveyor.

Account rendered to here.

9 25 1903