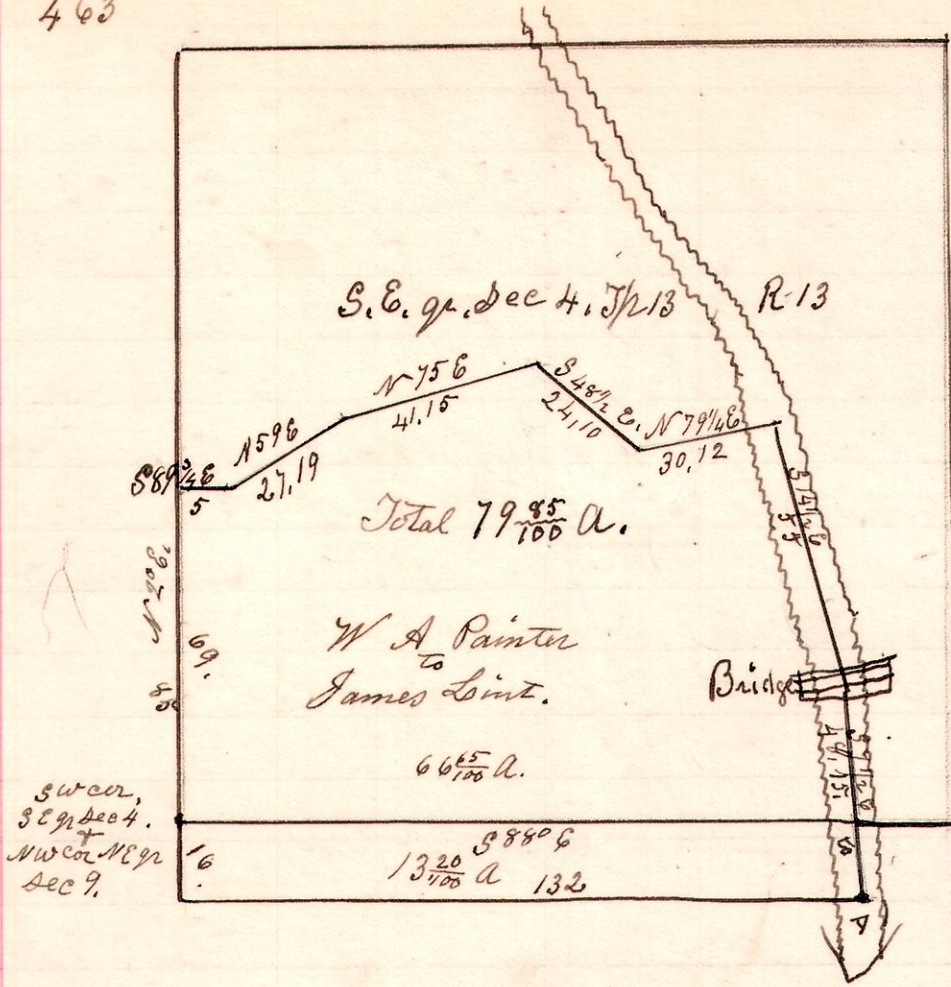


13 13 4 89

463



A survey made for Wm A Painter
 being the south west part of
 the South East quarter of Sec
 4, T. 13, R. 13 and the North west part
 of the north east quarter of
 Section 9, T. 13, R. 13.

January 27th 1903.

H. H. Robinson
 County Surveyor.

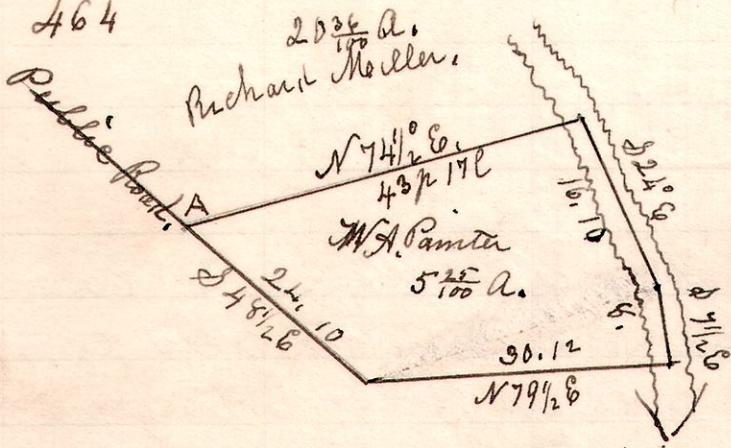
Chain Carriers,
 John McClelland
 John Miller.

Present at survey.

W. A. Painter, James Lint,
 Rich Miller, Young Johnson,
 Meredith, Tho Ewing.

13 13 4 26.

464



A Survey made for Wm A Painter
 being part of the middle part
 of the South East quarter of
 Section 4, T. 13, R. 13.

Commencing at the south west
 corner (A) of a 20^{3/100} acre piece of
 land formerly sold by Thomas Ewing to Richard Miller.
 The center of the Public Road on the west, and the center
 of Killbuck Creek on the East are the east and west lines.
 January 27th 1903.

H. H. Robinson
 County Surveyor.

Persons present, same as at No 463.

Chain Carriers

John McClelland + John Miller.

13 13 4 20

No 465.



A survey made for Wm A Painter
 being part of the west part
 of the South East quarter of
 Section 4, in Township 13,
 of Range 13.

January 27th 1903.

H. H. Robinson
 County Surveyor.

Chain Carriers,
 John McClelland,
 John Miller.