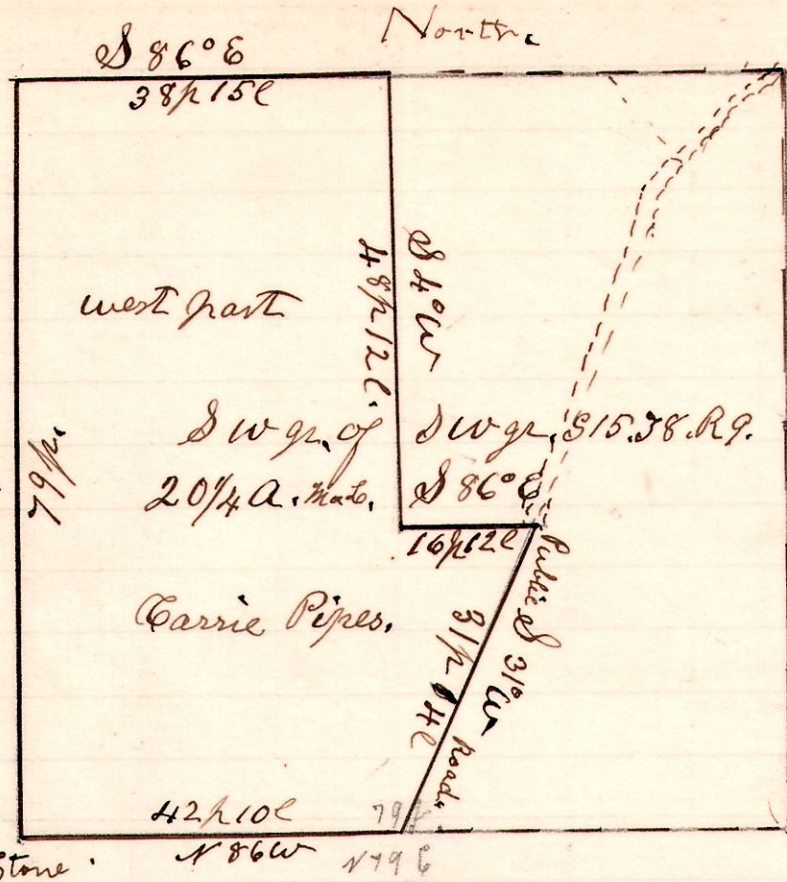


9 8 15

461



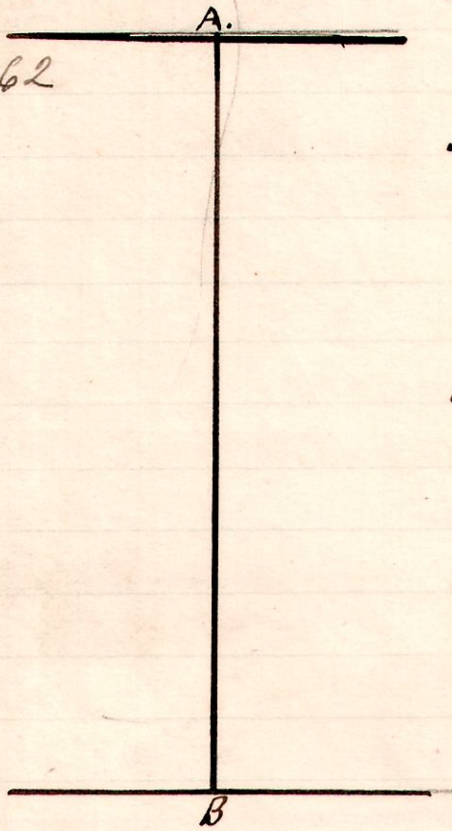
A survey made for
Doc and Carrie Pipes
Being the north part of
the south west quarter
of the south west quarter
of section 15, in Township
8 of Range 9.
December 30th 1902.
H. H. Robinson
County Surveyor

Chain Carriers.
Joseph Hall.
Walter Black.
Flag
Elyde Pipes.

9 8 15

462

A. notch in rock. East 9 3/4 c.



A Survey made for Doc Pipes
and Tom White to locate corners
at end and line between the
north west quarter of the south
East quarter, and the north
East quarter of the south west quarter
of section 15, Township 8, of
Range 9.

December 30th 1902,
H. H. Robinson
County Surveyor

B. 30-15" N 50° E, 4 c

The end of 1902, Now for 1903.