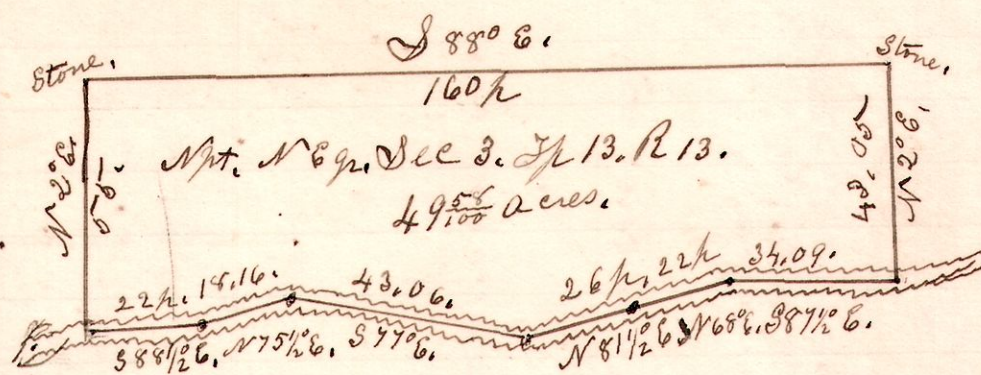


13 13 3 ne.

No 450



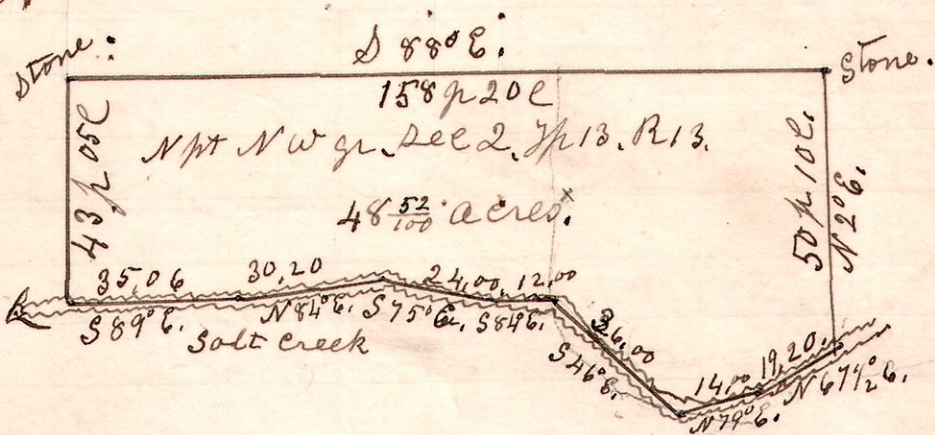
A survey made for John D Ewing, being the north part of the north east quarter of section 3, in Township 13, of Range 13.

Chancery, Nov 20th 1902.
 John McClelland,
 Ed Parrot.

H. H. Robinson
 County Surveyor.

No 451

13 13 2 nw.



A survey made for John D Ewing, being the north part of the north west quarter of section 2, in Township 13, of Range 13.

Chancery
 John McClelland,
 Edw Parrot.

November 20th 1902.

H. H. Robinson
 County Surveyor.