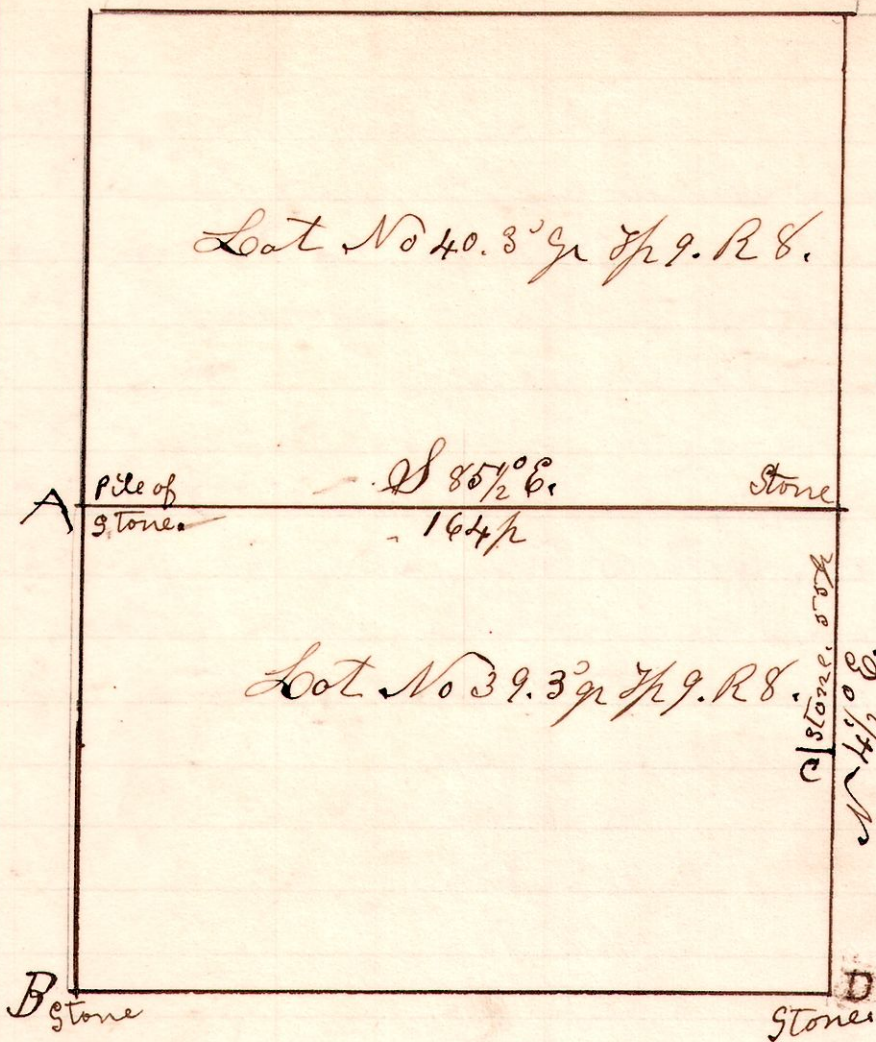


8 9 lots 39 & 40

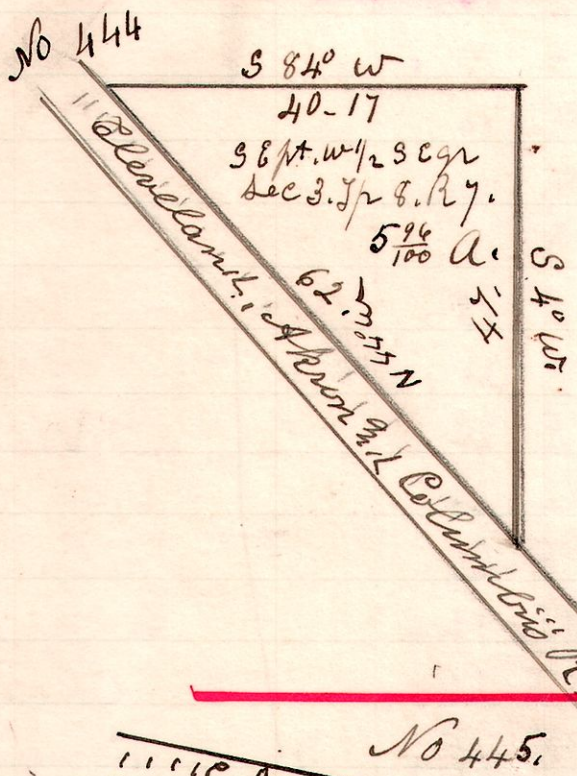
No 443



A survey made for Theodore M. Allison being line between lots 39 & 40, in the 3rd Tp 9 R 8. To locate the line between said lots and to hunt and establish corners. A, both witness trees down and part decayed, established corner from said trees and took witness wickory 14" N 60° W 24'. C. White Oak 16" S 15° E 21'. J. Black Oak 16" S 40° W 11'. D. B. Oak 6" S 45° E 4'. Nov 10th 1902.

H. H. Robinson
County Surveyor.

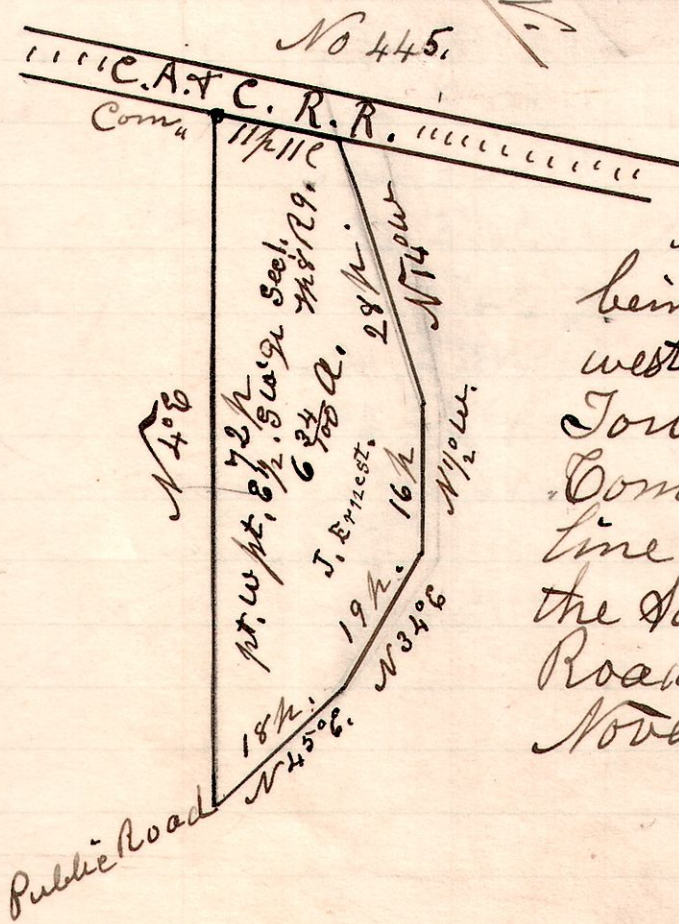
7 8 3 X



A survey made for Jacob Uhl being the south east part of the west half of the south east quarter of section 3. in Township 8 of Range 7. Nov 11th 1902

H. H. Robinson
County Surveyor.

9 8 1



A survey made for J. W. McLaughlin being part of the west part, of the south west quarter of section 1, in Township 8. of Range 9. Commencing at a post on the west line of said half quarter, and on the south line of the C.A. & C Rail Road, as indicated in plat. November 12th 1902

H. H. Robinson
County Surveyor.