

A survey made for Sol Deetz, S. D. Anderson and Samuel Devore, to locate the line A. E. Being the north line of Section 21, Township 9 of Range 7.

- A. Post. R. Oak 6. N59°W 24.
- " Beech 8, N66°E 27.
- B Stone 144 East of large white oak.
- C. Post gr. sec corner.
- D. Stone East of Hickory stump.
- E. Stone, white Elm 18 N31°W 15, in Road.

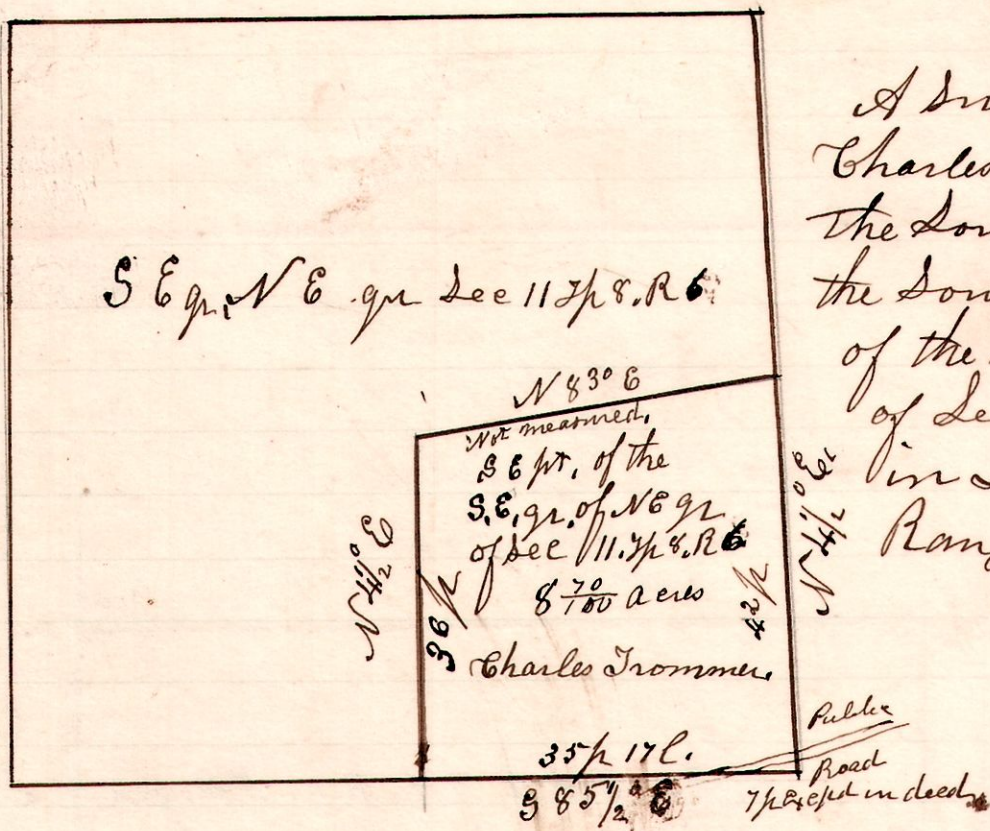
Present Samuel Devore; S. D. Anderson, Sol Deetz, Bert Devore, and two of Sol Deetz's boys.

April 12th 1902.

H. H. Robinson
County Surveyor.

6 8 11. 189

388



A survey made for Charles Trommer, being the South East part, of the South East quarter, of the north East quarter, of Section number 11, in Township 8, of Range 6.

April 17th 1902.

H. H. Robinson
County Surveyor.

Assistants
Francis Farmer.
Noah Farmer.