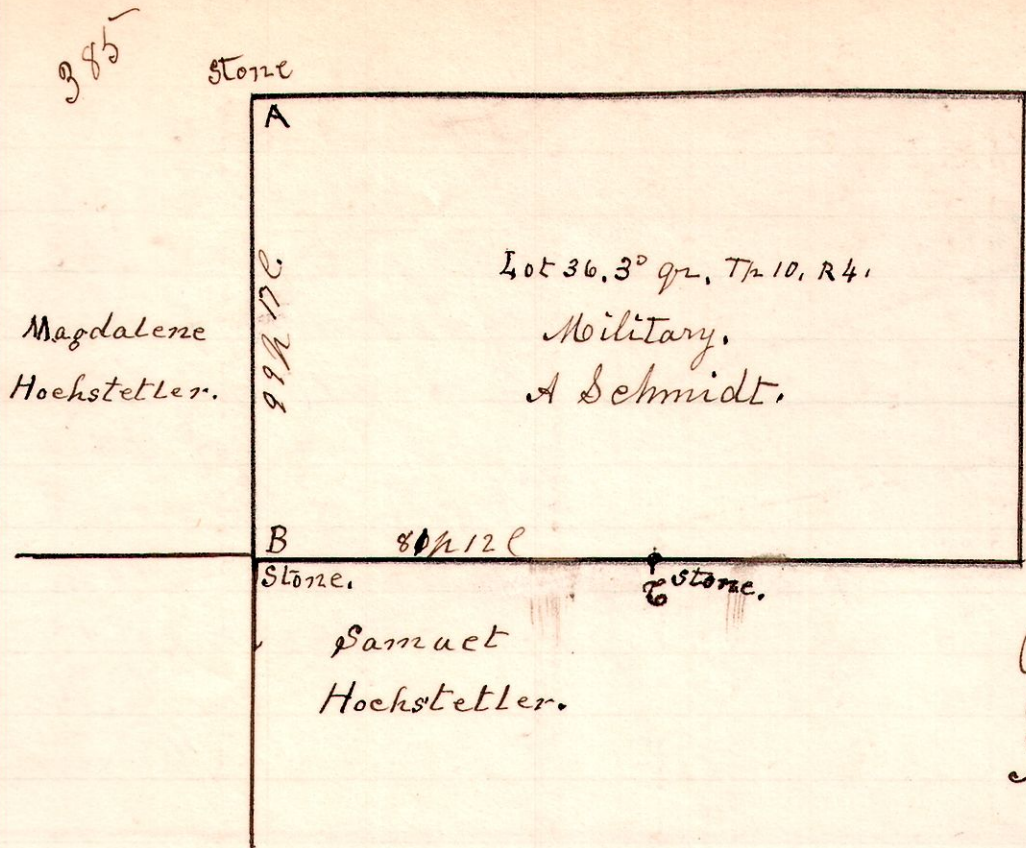


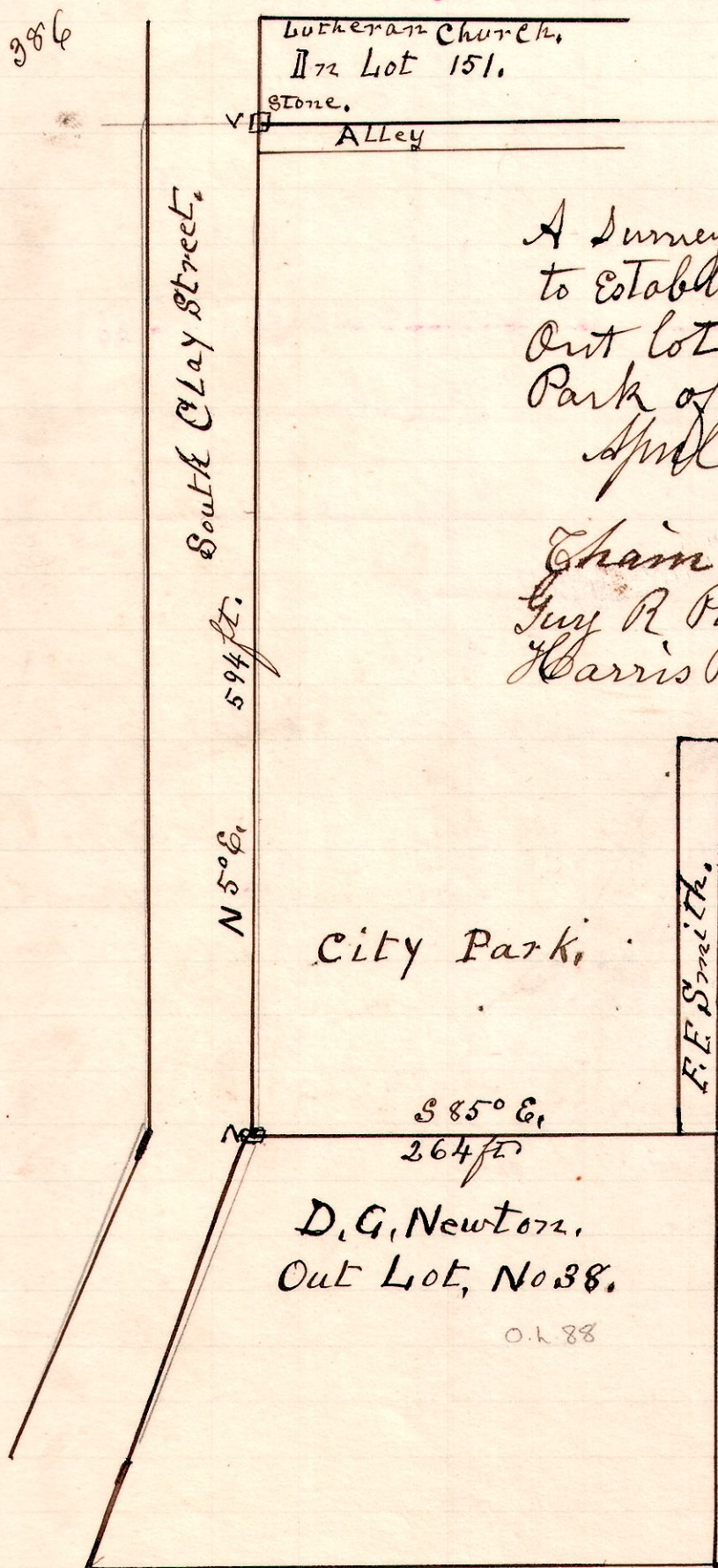
4 10 36 3<sup>rd</sup> q<sup>r</sup>.



A Survey made for Samuel Hochstetler to locate the lines A, B, C. the same having been divided for fencing purposes, and assigned to the owners by the Trustees of Pant Township.  
Chain carriers,  
Charles Bader,  
Fred Frankhauer.

Flagmen,  
John Pfeister,  
Jo. Stall.  
April 7<sup>th</sup> 1901.  
H. H. Robinson  
County Surveyor.

Millersburg 386



A Survey made for D. G. Newton to establish corners and line between Out lot number 38, and the village Park of Millersburg Ohio.  
April 9<sup>th</sup> 1902

Chain carriers  
Guy R. Palmer,  
Harris Palmer.

H. H. Robinson  
County Surveyor.